



University of Lethbridge  
**GRASSHOPPERS**  
13-month Wall Calendar

**CANADA**  
**2020**









The Speckle-winged Rangeland Grasshopper (*Arphia conspersa*) grows through the summer and overwinters as an immature that resists freezing.

(Photo: Dan Johnson)

# January 2020

Sun	Mon	Tue	Wed	Thu	Fri	Sat
29	30	31	1 • New Year's Day	2	3	4
5	6	7	8	9	10	11
12	13	14	15	16	17	18
19	20	21	22	23	24	25
26	27	28	29	30	31	1







Turnbull's Grasshopper, also called Russian Thistle Grasshopper (*Aeoloplides turnbulli*), eats only weeds, and is never a pest.

(Photo: Dan Johnson)

# February 2020

Sun	Mon	Tue	Wed	Thu	Fri	Sat
26	27	28	29	30	31	1
2	3	4	5	6	7	8
9	10	11	12	13	14	15
16	17	18	19	20	21	22
23	24	25	26	27	28	29





The Club-horned Grasshopper (*Aeropedellus clavatus*) hatches early, and is important food for songbirds feeding nestlings in spring.

(Photo: Dan Johnson)

# March 2020

Sun	Mon	Tue	Wed	Thu	Fri	Sat
1	2	3	4	5	6	7
8	9	10	11	12	13	14
15	16	17	18	19	20	21
22	23	24	25	26	27	28
29	30	31	1	2	3	4







The nearly mature Speckle-winged Rangeland Grasshopper (*Arphia conspersa*) overwinters and then grows red wings in spring.

(Photo: Dan Johnson)

# April 2020

Sun	Mon	Tue	Wed	Thu	Fri	Sat
29	30	31	1	2	3	4
5	6	7	8	9	10 • Good Friday	11
12	13 • Easter Monday (Many regions)	14	15	16	17	18
19	20	21	22	23	24	25
26	27	28	29	30	1	2





The Two-striped Grasshopper (*Melanoplus bivittatus*) hatches early and is found over much of North America.

(Photo: Dan Johnson)

# May 2020

Sun	Mon	Tue	Wed	Thu	Fri	Sat
26	27	28	29	30	1	2
3	4	5	6	7	8	9
10	11	12	13	14	15	16
17	18 • Victoria Day (Many regions)	19	20	21	22	23
24	25	26	27	28	29	30
31	1	2	3	4	5	6







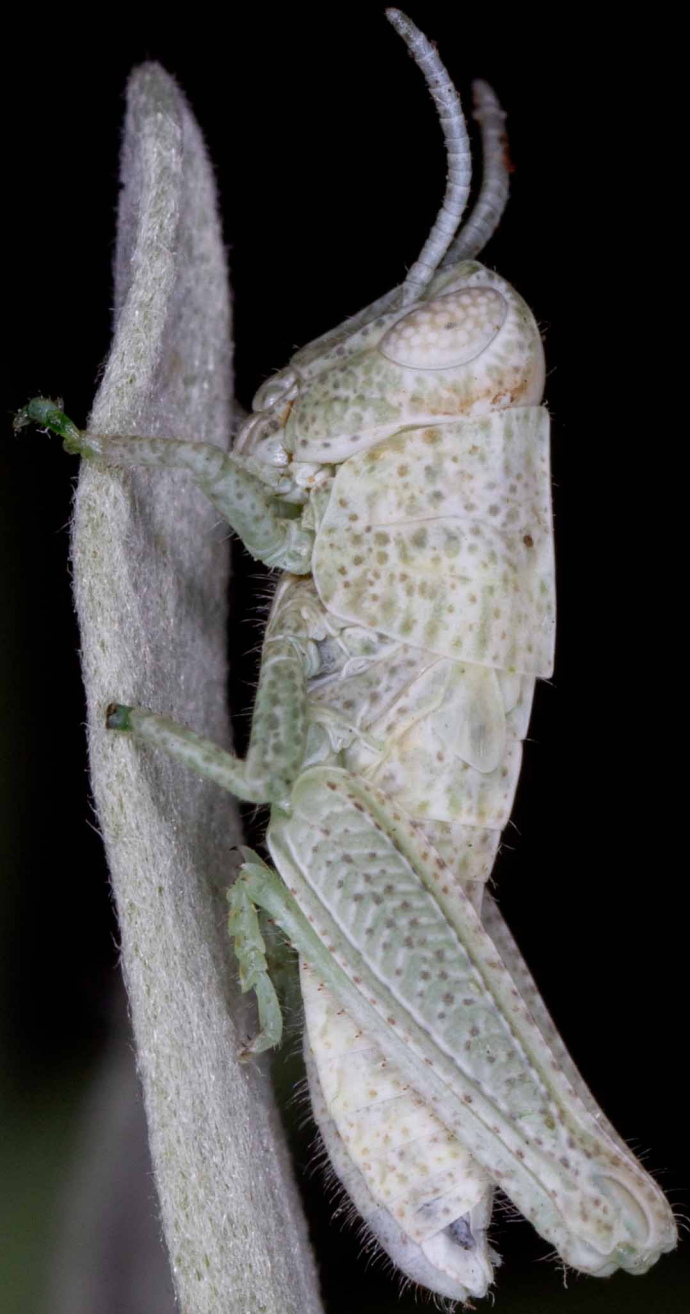
The Gladiator Meadow Katydid (*Orchelimum gladiator*) is a singing insect that has a sword-shaped egg-laying structure.

(Photo: Dan Johnson)

# June 2020

Sun	Mon	Tue	Wed	Thu	Fri	Sat
31	1	2	3	4	5	6
7	8	9	10	11	12	13
14	15	16	17	18	19	20
21	22	23	24	25	26	27
28	29	30	1 • Canada Day	2	3	4







*Hypochlora alba*, called the Greenish-white Grasshopper in Canada and the Mugwort or Cudweed Grasshopper in the USA, is flightless and feeds on a species of sage.

(Photo: Dan Johnson)

# July 2020

Sun	Mon	Tue	Wed	Thu	Fri	Sat
28	29	30	1 • Canada Day	2	3	4
5	6	7	8	9	10	11
12	13	14	15	16	17	18
19	20	21	22	23	24	25
26	27	28	29	30	31	1





The Northern Spur-throat Grasshopper (*Melanoplus borealis*) is found in northern grassland, open forests, and mountains.

(Photo: Dan Johnson)

# August 2020

Sun	Mon	Tue	Wed	Thu	Fri	Sat
26	27	28	29	30	31	1
2	3	4	5	6	7	8
9	10	11	12	13	14	15
16	17	18	19	20	21	22
23	24	25	26	27	28	29
30	31	1	2	3	4	5





The male Northern Green-striped Grasshopper (*Chortophaga viridifasciata*) is tan but the female can be green or brown. Both have yellow flying wings.

(Photo: Dan Johnson)

# September 2020

Sun	Mon	Tue	Wed	Thu	Fri	Sat
30	31	1	2	3	4	5
6	7 • Labour Day	8	9	10	11	12
13	14	15	16	17	18	19
20	21	22	23	24	25	26
27	28	29	30	1	2	3





The Red-winged Grasshopper (*Arphia pseudonietana*) flies in the fall. It appears to fade into the background when it lands.

(Photo: Dan Johnson)

# October 2020

Sun	Mon	Tue	Wed	Thu	Fri	Sat
27	28	29	30	1	2	3
4	5	6	7	8	9	10
11	12 • Thanksgiving Day (Many regions)	13	14	15	16	17
18	19	20	21	22	23	24
25	26	27	28	29	30	31





The Obscure Grasshopper (*Opeia obscura*) is found from Canada to Mexico, most often on grassland with blue grama grass.

(Photo: Dan Johnson)

# November 2020

Sun	Mon	Tue	Wed	Thu	Fri	Sat
1	2	3	4	5	6	7
8	9	10	11 • Remembrance Day (Many regions)	12	13	14
15	16	17	18	19	20	21
22	23	24	25	26	27	28
29	30	1	2	3	4	5







Grassland songbirds depend on the Brown-spotted Range Grasshopper (*Psoloessa delicatula*) for food. It appears in spring as soon as snow is gone.

(Photo: Dan Johnson)

# December 2020

Sun	Mon	Tue	Wed	Thu	Fri	Sat
29	30	1	2	3	4	5
6	7	8	9	10	11	12
13	14	15	16	17	18	19
20	21	22	23	24	25 • Christmas Day	26 • Boxing Day (Many regions)
27	28	29	30	31	1 • New Year's Day	2



The Clear-winged Grasshopper (*Camnula pellucida*) feeds on grasses and cereals. It increases in numbers in warm, dry weather.

(Photo: Dan Johnson)

# January 2021

Sun	Mon	Tue	Wed	Thu	Fri	Sat
27	28	29	30	31	1 • New Year's Day	2
3	4	5	6	7	8	9
10	11	12	13	14	15	16
17	18	19	20	21	22	23
24	25	26	27	28	29	30
31	1	2	3	4	5	6



FRONT COVER: Overwintering Red-shanked Grasshoppers (*Xanthippus corallipes*) are resistant to freezing and other environmental challenges. They are food for grassland owls.

BACK COVER: The Velvet-striped Grasshopper (*Eritettix simplex*) hatches early and is an important source of bird food in April and May. It is not a pest of agriculture.

(All photographs in this calendar are from Alberta, Canada, by Dan Johnson, Lethbridge)



PRINTED BY UNIVERSITY OF LETHBRIDGE PRINTING SERVICES

Johnson Research  
Lethbridge, Alberta  
dan.johnson@uleth.ca  
dan.orthop@gmail.com

