



The Assassin Bug (*Stenopoda spinulosa*) uses its robust piercing mouth to attack other insects as prey.

(Photo: Dan Johnson)



This Northern Green-striped Grasshopper (*Chortophaga viridifasciata*) began feeding when only a few hours old.

(Photo: Dan Johnson)

January 2019

Sun	Mon	Tue	Wed	Thu	Fri	Sat
30	31 New Year's Eve	1 New Year's Day	2	3	4	5
6	7	8	9	10	11	12
13	14	15	16	17	18	19
20	21 Martin Luther King Jr. Day	22	23	24	25	26
27	28	29	30	31	1	2



The Nine-spotted Lady Beetle (*Coccinella novemnotata*) is capable of consuming over a hundred aphids and other small insect prey per day.

(Photo: Dan Johnson)

February 2019

Sun	Mon	Tue	Wed	Thu	Fri	Sat
27	28	29	30	31	1	2
3	4	5	6	7	8	9
10	11	12	13	14 Valentine's Day	15	16
17	18 Presidents' Day (Most regions)	19	20	21	22	23
24	25	26	27	28	1	2

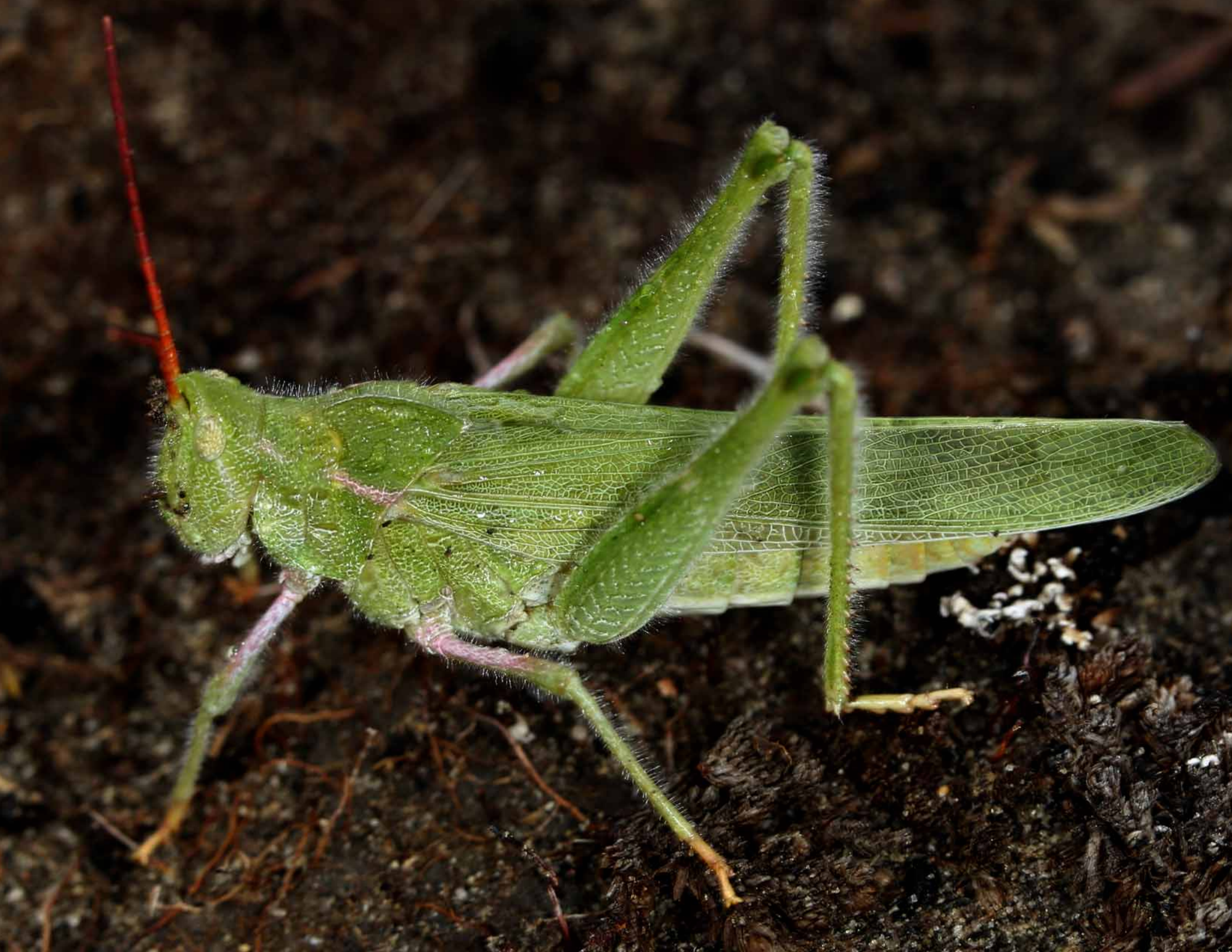


Larinus planus is a species of weevil that can serve as an agent of biological control of Canada thistle.

(Photo: Dan Johnson)

March 2019

Sun	Mon	Tue	Wed	Thu	Fri	Sat
24	25	26	27	28	1	2
3	4	5	6	7	8	9
10	11	12	13	14	15	16
17 <small>St. Patrick's Day</small>	18	19	20	21	22	23
24	25	26	27	28	29	30
31	1	2	3	4	5	6



The ungainly Green Fool Grasshopper (*Acrolophitus hirtipes*) can fly, but looks like a green drone with long legs.

(Photo: Dan Johnson)

April 2019

Sun	Mon	Tue	Wed	Thu	Fri	Sat
31	1	2	3	4	5	6
7	8	9	10	11	12	13
14	15 <small>Tax Day</small>	16	17	18	19	20
21 <small>Easter Sunday</small>	22	23	24	25	26	27
28	29	30	1	2	3	4



The adult stage of Broad-headed Bug (*Alydus eurinus*) is a typical plant bug but the immature stage mimics black ants.

(Photo: Dan Johnson)

May 2019

Sun	Mon	Tue	Wed	Thu	Fri	Sat
28	29	30	1	2	3	4
5 <small>Cinco de Mayo</small>	6	7	8	9	10	11
12 <small>Mother's Day</small>	13	14	15	16	17	18
19	20	21	22	23	24	25
26	27 <small>Memorial Day</small>	28	29	30	31	1



Long-horned bees like *Melissodes* often snuggle and sleep in flowers.

(Photo: Dan Johnson)

June 2019

Sun	Mon	Tue	Wed	Thu	Fri	Sat
26	27 Memorial Day	28	29	30	31	1
2	3	4	5	6	7	8
9	10	11	12	13	14	15
16 Father's Day	17	18	19	20	21	22
23	24	25	26	27	28	29
30	1	2	3	4 Independence Day	5	6



These three Tomato-potato Psyllids (*Bactericera cockerelli*) are sampling the liquid in the cells of a plant stem.

(Photo: Dan Johnson)

July 2019

Sun	Mon	Tue	Wed	Thu	Fri	Sat
30	1	2	3	4 Independence Day	5	6
7	8	9	10	11	12	13
14	15	16	17	18	19	20
21	22	23	24	25	26	27
28	29	30	31	1	2	3



Bee flies (family Bombyliidae) are important pollinators, and in their larval stages they are parasitoids and predators that reduce the numbers of agricultural insect pests.

(Photo: Dan Johnson)

August 2019

Sun	Mon	Tue	Wed	Thu	Fri	Sat
28	29	30	31	1	2	3
4	5	6	7	8	9	10
11	12	13	14	15	16	17
18	19	20	21	22	23	24
25	26	27	28	29	30	31



The rare blue form of the Red-legged Grasshopper (*Melanoplus femurrubrum*) appears in only a few small populations on the prairies, sometimes in only one square kilometer.

(Photo: Dan Johnson)

September 2019

Sun	Mon	Tue	Wed	Thu	Fri	Sat
1	2 Labor Day	3	4	5	6	7
8	9	10	11	12	13	14
15	16	17	18	19	20	21
22	23	24	25	26	27	28
29	30	1	2	3	4	5



Opeia obscura, the obscure grasshopper, is a member of the slant-faced grasshopper family that is adapted to feeding on native grasses.

(Photo: Dan Johnson)

October 2019

Sun	Mon	Tue	Wed	Thu	Fri	Sat
29	30	1	2	3	4	5
6	7	8	9	10	11	12
13	14 Columbus Day (Most regions)	15	16	17	18	19
20	21	22	23	24	25	26
27	28	29	30	31 Halloween	1	2

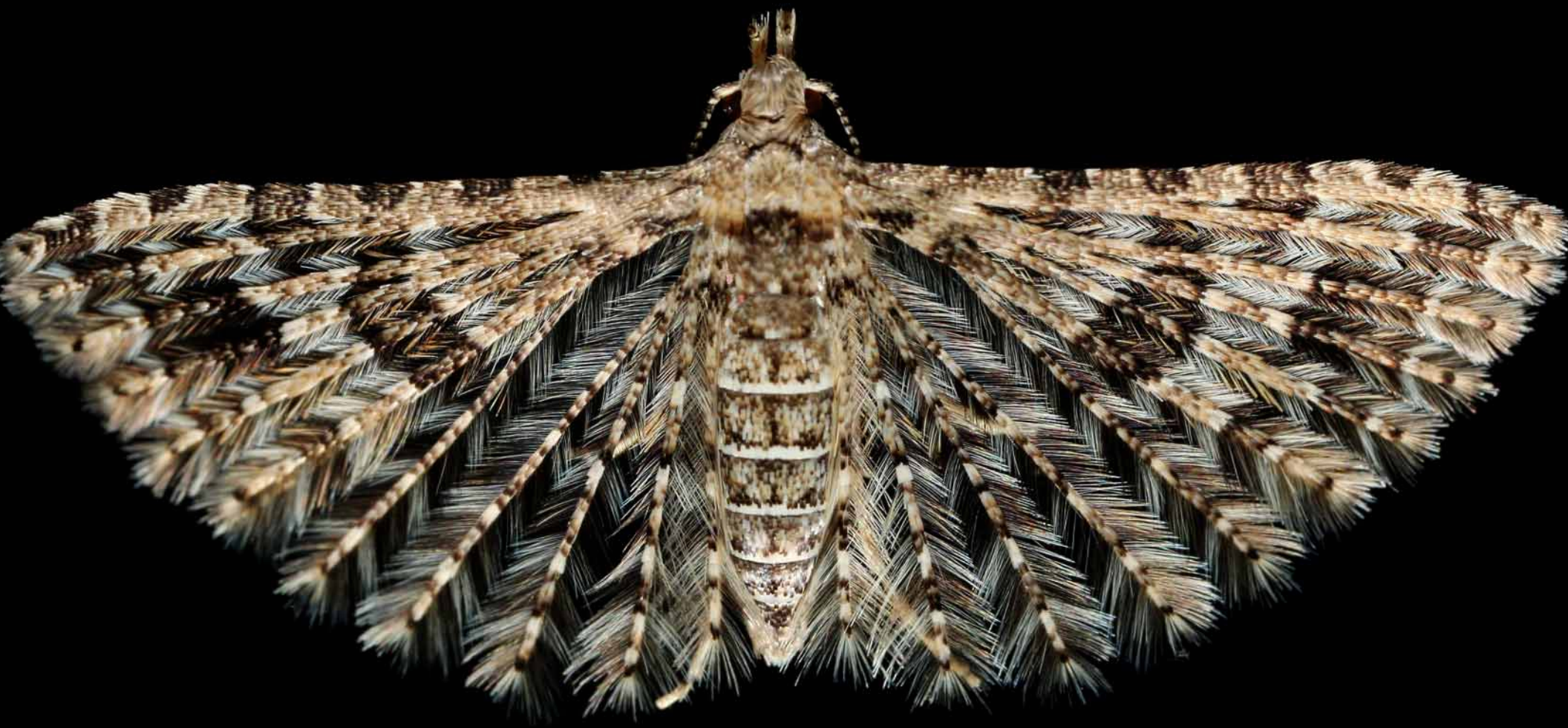


The Melissa Blue (*Plebejus melissa*) is a butterfly found across southern Alberta, and is very similar in appearance to the Karner Blue (*Plebejus melissa samuelis*), an endangered subspecies.

(Photo: Dan Johnson)

November 2019

Sun	Mon	Tue	Wed	Thu	Fri	Sat
27	28	29	30	31 <small>Halloween</small>	1	2
3	4	5	6	7	8	9
10	11 <small>Veterans Day</small>	12	13	14	15	16
17	18	19	20	21	22	23
24	25	26	27	28 <small>Thanksgiving Day</small>	29 <small>Black Friday</small>	30



Tiny plume moths like *Alucita montana*, the Montana Six-plume Moth, can be found in homes, resting on a mirror or white wall.

(Photo: Dan Johnson)

December 2019

Sun	Mon	Tue	Wed	Thu	Fri	Sat
1	2	3	4	5	6	7
8	9	10	11	12	13	14
15	16	17	18	19	20	21
22	23	24 Christmas Eve	25 Christmas Day	26	27	28
29	30	31 New Year's Eve	1 New Year's Day	2	3	4



Buckell's Timberline Grasshopper, *Buckellacris nuda*, has no wings at all, and lives only in alpine and montane environments.

(Photo: Dan Johnson)

January 2020

Sun	Mon	Tue	Wed	Thu	Fri	Sat
29	30	31 <small>New Year's Eve</small>	1 <small>New Year's Day</small>	2	3	4
5	6	7	8	9	10	11
12	13	14	15	16	17	18
19	20 <small>Martin Luther King Jr. Day</small>	21	22	23	24	25
26	27	28	29	30	31	1

Euperilampus triangularis is a species of metallic chalcid wasp, in the family Perilampidae, that parasitizes other insects.

(All photographs in this calendar are from Alberta, Canada, by Dan Johnson, Lethbridge)

