

Individual ~~and Seasonal~~ Variation in the Courtship Display of the Ruffed Grouse



Courtship in Birds



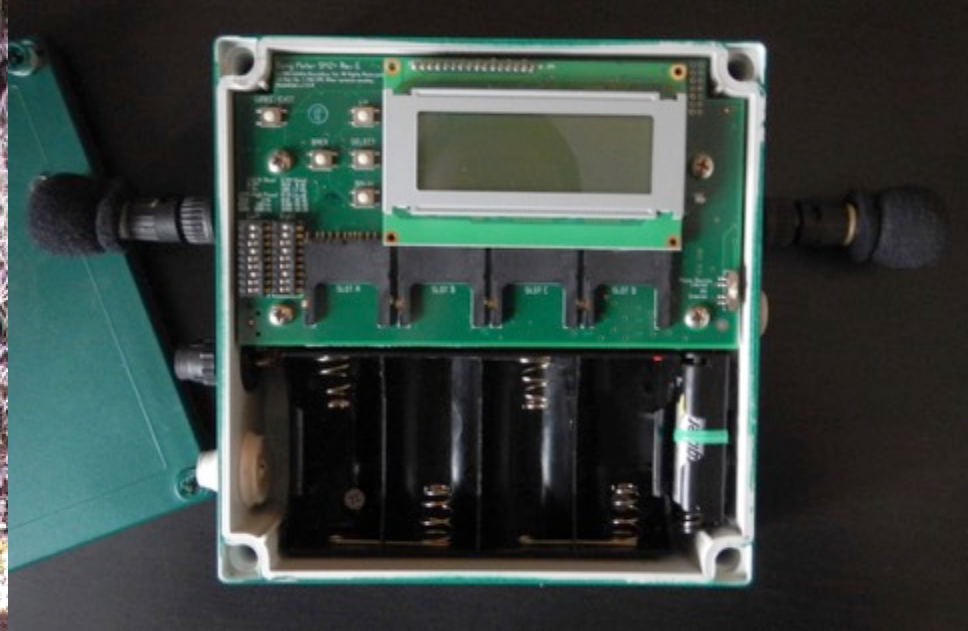
G. Romanchuk

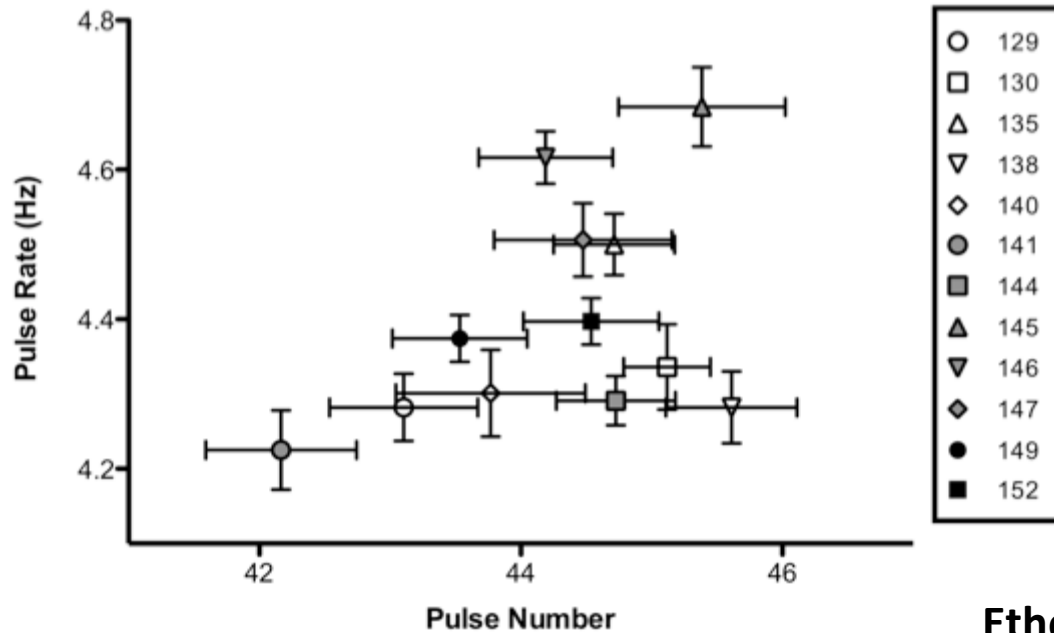
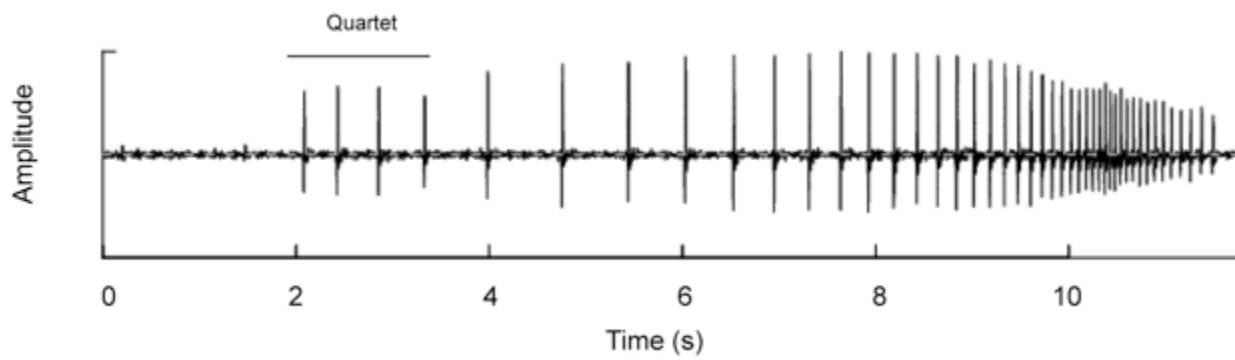


P. Stubbs



PeerJ 6:e4621

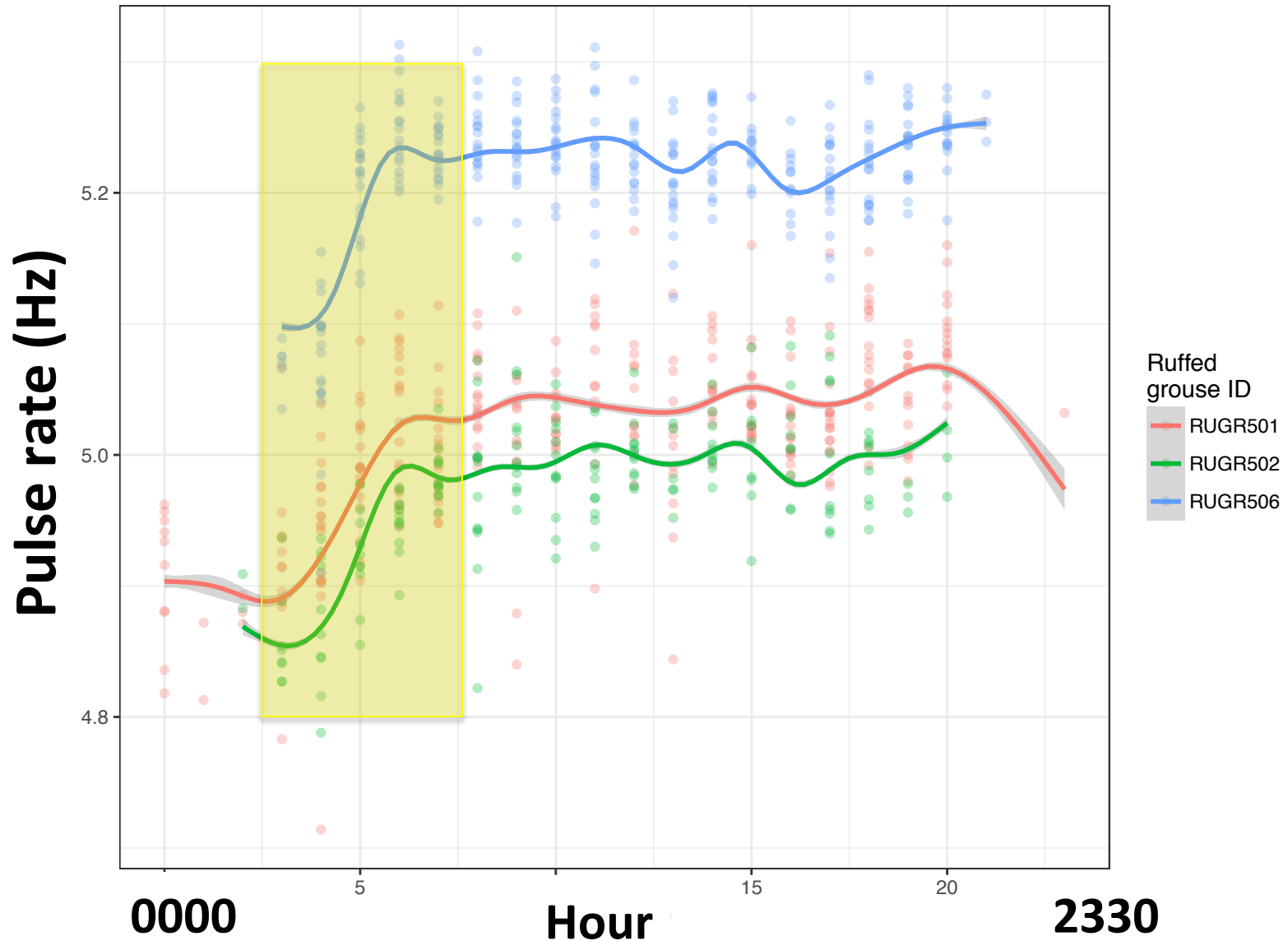




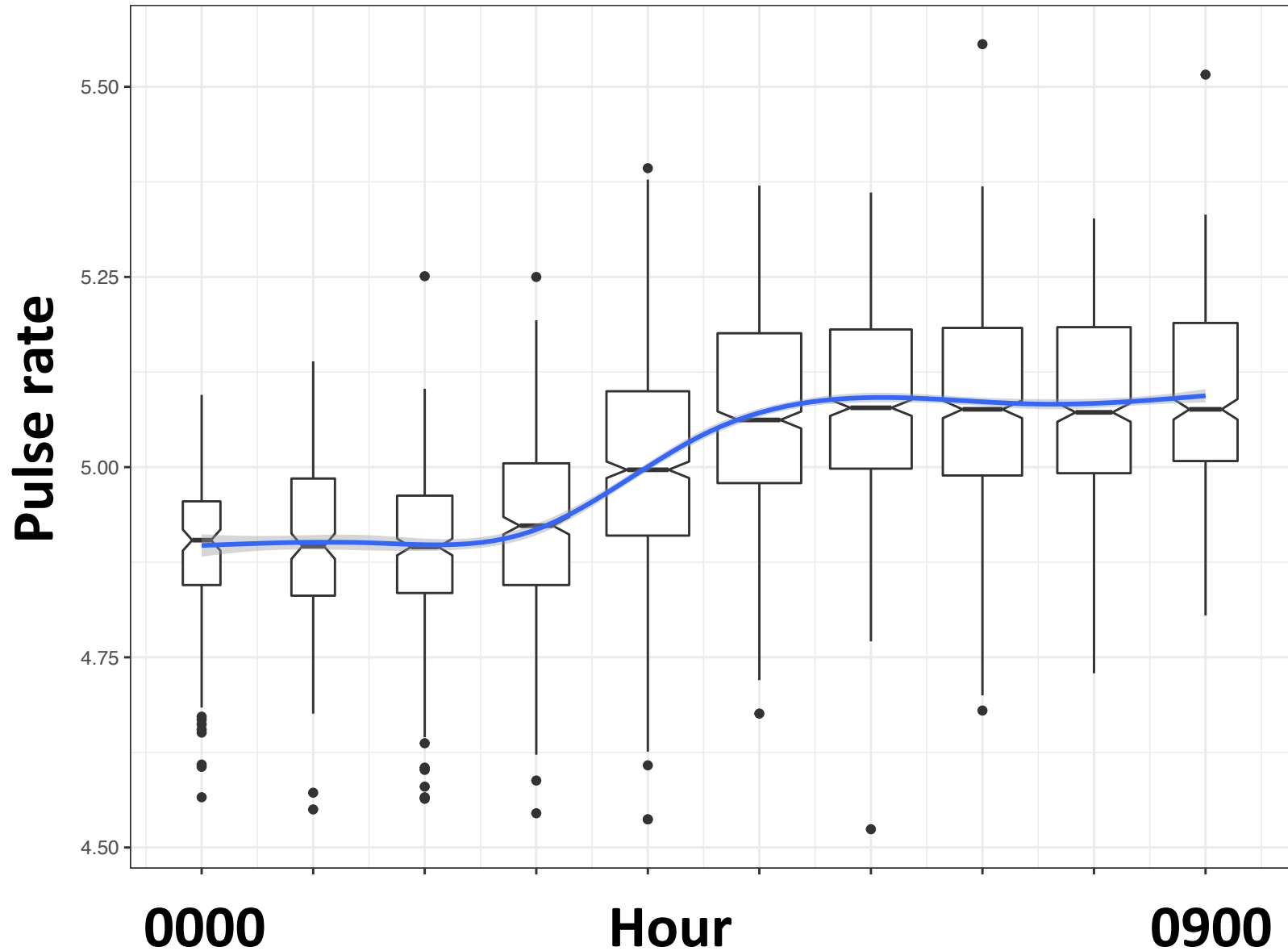
Ethology 118: 292-301.

- pulse rate = drumming speed
- pulse rate varies across males, but does it vary within individuals?

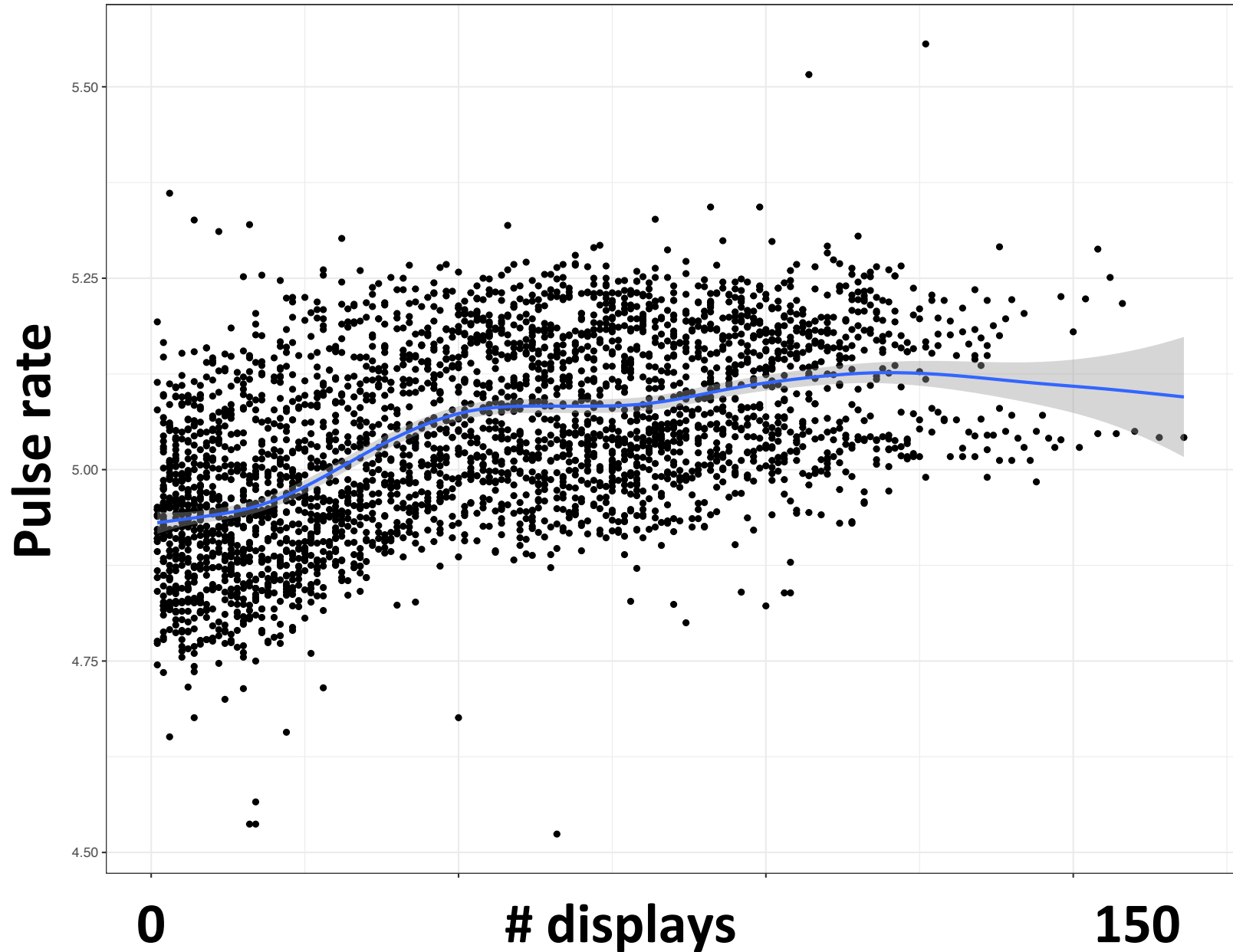
- pulse rate increases during early morning hours and is then maintained for the rest of the day



**GAMM = across 12 males (5,207 drumming displays),
pulse rate increases until approx. 0700**



- similar pattern with # cumulative drumming displays





- suggests that males undergo a 'warm up' period
- to some extent, this parallels behaviour early in the season
- whether females care about pulse rate is unknown
- does pulse rate vary with phenotype?

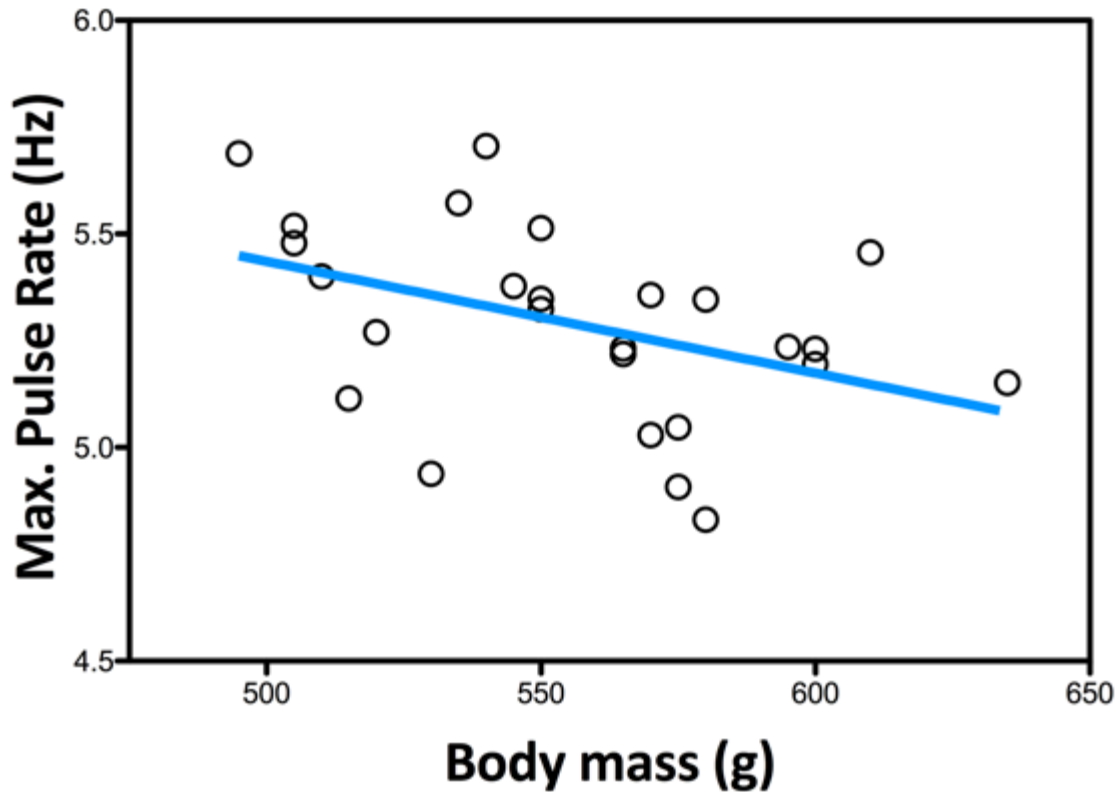




MOULTRIECAM

25 APR 2014 04:06 pm

- larger males (n = 26) drum slower than smaller males
- other measurements (e.g., wing size, body condition) were not significantly correlated with pulse rate





- **still lots of unanswered questions, but...**
- **preliminary evidence of ruffed grouse 'warming up' could be indicative of a generalized phenomenon in avian courtship displays**

Thank You

Students:

Justin Krilow

Nick O'Neil

Ashley Jensen



Collaborators:

Isabelle Charrier

Eloïse Déaux



Canada Foundation
for Innovation

Fondation canadienne
pour l'innovation



NSERC
CRSNG

