

## Male-Female Earnings Differentials in Canada: Where in the Earnings Distribution do they Exist?

Richard E. Mueller  
Department of Economics  
University of Lethbridge  
Lethbridge, AB T1K 3M4  
(403) 329 2510  
[richard.mueller@uleth.ca](mailto:richard.mueller@uleth.ca)

May 2009

### Abstract

The gender pay gap is the topic of countless papers in the economics and social science literature. Its study can be traced back at least as far as the Old Testament (Gunderson, 2006), and debates on the issue in the media and elsewhere often generate much more heat than light. For policy purposes, it is converse that is needed most. This research will use the SLID from 1996 and 2005 to determine (1) how the *average* gender pay gap has evolved over this decade, (2) if there are differences in the gender pay gap at various points of the pay distribution, and (3) if there have been changes in gender pay at these points in the pay distribution over this period. We “link” this current research with the previous Canadian literature on the subject using the ubiquitous Oaxaca-Blinder decomposition, followed by an extension of this technique which explicitly addresses the explained and unexplained part of the pay gap at different points along the pay distribution. We find that the adjusted mean hourly wage gap for females has increased about one percentage point between 1996 and 2005 to about 89 per cent of the male hourly wage. The wage gap differs depending on which range of the wage distribution is being considered, and is sensitive to the choice of wage measure.

Thanks to Marie Drolet, Ian Howe and Benoit Delage??, for providing useful comments on an earlier draft of this paper, and to HRSCD for providing financial support for this research.

## **Male-Female Earnings Differentials in Canada: Where in the Earnings Distribution do they Exist?**

### **I. Background**

One of the most studied phenomena in labour economics has been the difference in pay between men and women.<sup>1</sup> One constantly hears media reports that women earnings are only about 70 percent of male earnings. Although this gap is narrowing over time, the gap itself persists. Generally, as data sets include a wider range of pertinent variables and empirical methodologies become more sophisticated, researchers find that they are able to explain a larger proportion of this pay gap differential on various observable characteristics. They are also able to ascertain the sources of the gap. Any unexplained proportion of the overall gap in favour of men is the result of unobservable differences in characteristics between the sexes, including possible wage discrimination against women. To date, however, we do not have an understanding of where in the earnings distribution this pay gap exists, since the usual methodologies used simply ascertain any average gap between men and women based on the mean observable characteristics of each group. As is well known to researchers, these averages can mask the size of gaps along the pay distribution. For example, it may be larger gaps at the top of the pay distribution which pull up the average, while gaps may not exist (or even favour women) at lower points in the same distribution. This makes such studies of limited use since researchers are unable to determine exactly where policy could be directed to better understand the sources of any pay differentials.

There have been a number of studies on the gender pay gap using Canadian data over the past three decades.<sup>2</sup> Although these studies are diverse in the data sets used, the time periods studies, etc., there are a number of

---

<sup>1</sup> Throughout this paper I will use the term “gender pay gap” as a generic phrase that includes differences in annual earnings, weekly earnings, or hourly wages. Each of these has been used in the literature and will be used in this research as well.

<sup>2</sup> The major studies, the methodologies and data sets employed, and the main findings are contained in the separate data appendix that accompanies this paper.

commonalities between them that are worthy of noting. First, most studies of the gender pay gap use the familiar decomposition technique developed independently by Blinder (1973) and Oaxaca (1973) or one of the many variants to this technique.<sup>3</sup> Thus, they say nothing about the pay gap at various points of the earning distribution. Second, studies on the pay gap have generally taught us that oft-quoted unadjusted pay gap of ~30 percentage points (e.g., Statistics Canada, 2006) tends to shrink as more and better controls are used to appropriately adjust the gap. For example better measures of labour market experience (Drolet, 2002b; Kidd and Shannon, 1994), unionization (Doiron and Riddell, 1994; Kidd and Shannon, 1996) and workplace characteristics (Drolet, 2002a), can shrink the gap to less than 10 percentage points. This, however, still leaves some of the pay gap unexplained.

As much as these studies have added to our knowledge, they have focused on the mean pay gap. This could potentially distort the magnitude of any gap. For example, if women are subject to a glass ceiling (i.e., prohibited from advancing through the salary ranks due to discrimination, e.g., OECD, 2007), then we may see large gaps at the right tail of the pay distribution, but perhaps no gap (or even a pay premium) for those at the mean or left tail of the same distribution. This has not been addressed in the Canadian literature. Furthermore, these studies are inherently limited and may not accurately represent what is currently happening in the Canadian labour market, especially over the past few years as the Canadian economy has expanded and unemployment rates have tumbled.

To the best of my knowledge, only two published Canadian have addressed the pay gap at different points of the earnings distribution: Drolet (2001) and Baker, et al. (1995). Drolet (2001:9) notes that there are differences between males and females at different points of the earnings distribution and that “different wage-determining characteristics *at the mean* [fail] to accurately

---

<sup>3</sup> Canadian studies using this methodology include, but are not limited to, Shapiro and Stelcner (1987), Maki and Ng (1990), Christofides and Swidinsky (1994), Doiron and Riddell (1994), Baker et al. (2001), Finnie and Wannell (1996, 2004), Kidd and Shannon (1996), Day and Devlin (1997), Christie and Shannon (2001), Drolet (2001, 2002b), Fortin and Huberman (2002), Ng (2003), Leung (2006), Warman et al. (2006), Frenette and Coulombe (2007), and Myles, et al. (2007).

represent the differences encountered *along* the wage distribution.” [emphasis in original].

Indeed, there are theoretical reasons to believe that the gap may be narrowing recently and thus previous studies may be dated and therefore have not captured this change. In particular, factors such as the increased importance technology that favour “brain” over “brawn,” increased competition in the economy due to privatization, deregulation, and globalization, all of which have increased the power of market forces and, since the “taste” for discrimination against women is costly, its perpetrators may no longer be able (or willing) to pay this price (Gunderson, 2006).

Certainly recent evidence does suggest that the changes in the returns to education are an important factor in the pay gap over time. Frenette and Coloumbe (2007) argue that the increase in the proportion of young women holding a university degree has increased between 1981 and 2001, and this phenomenon assisted in reducing the male earnings gap among full-time, full-year workers in the 1980s. In the 1990s, by contrast, these educated females suffered an increasing pay gap, perhaps as a result of government cutbacks in spending on health and education (female-dominated fields) while engineering and technology graduates (male-dominated fields) saw their earnings rise. Both potentially caused the earnings gap to rise. These authors, however, use census data up to 2001, a time when the economic expansion in Canada was just beginning and the government cutbacks of the previous decade were being relaxed. Furthermore, the census data utilized do not contain detailed data on a number of labour market and job characteristics which have shown to be important in addressing the gender pay gap (e.g., union status). Still, as Finnie and Wannell (1996) have shown, although the gender pay gap has generally narrowed over time, it still tends to be narrower closer to graduation compared to a few years following graduation from post-secondary education. The implication is that something is occurring in the early labour market experiences of young men and women which results in the gap increasing over time.

Still, sometimes it is argued that women are more likely to quit and be absent from work compared to their males counterparts. This is then used as an explanation for the any wage differential. Recently, however, Zhang (2007) has shown that today there is no difference between male and female quit rates, and absenteeism is only greater for females with respect to paid sick leave (only one extra day per year). Chaykowski and Powell (1999) and Finnie (2000) and Statistics Canada (2006) also find similar convergence of various female labour supply measures.

The limitations of these previous studies in terms of time period(s) analyzed, datasets utilized, and methodologies employed will be addressed in this research. We compare two datasets almost 10 years apart, which will also allow us to see if changes occurred over this period. Since these two data sets are cross-sections, they do not allow us to address potentially important factors such as occupational segregation (Robb, 1987; Baker and Fortin, 2001) or the returns to job mobility (Simpson, 1990).

## II. Methodology

The most common methodology for determining pay differentials was independently developed by Blinder (1973) and Oaxaca (1973). Formally, the difference in the mean log wage between males and females is:

$$(1) \quad \overline{\ln w_m} - \overline{\ln w_f} = \sum b_m (\overline{X_m} - \overline{X_f}) + \sum (b_m - b_f) \overline{X_f}$$

where  $\overline{\ln w_i}$  is the mean natural logarithm of the wage of gender  $i$ ,  $b_i$  is a vector of estimated coefficients for gender  $i$ , and  $\overline{X_i}$  is a vector of average characteristics of workers of gender  $i$ , and  $i = m, f$  denotes males and females, respectively.

The first term on the right hand side of equation (1) shows the component of the log wage differential that is due to the difference in mean endowments between males and females. This is often referred to as the justifiable pay

differential since it is due to differences in endowments. The second term on the right hand side of equation (1) shows the component of the wage differential that is due to differences in the way that various characteristics are rewarded for males and females. This is usually referred to as the surplus or rent payment that is granted to males (if positive) and is the component that is commonly referred to as “discrimination” since it is unexplained by any of the wage generating controls. This component may also be the result of other characteristics that are unobservable to researchers as well. Indeed, studies that do include additional explanatory variables in the estimation generally find that this unexplained portion of the gender wage differential tends to decrease. For example, Drolet (2002a,b) finds that this is the case when better measures of workplace characteristics and labour market experience are included.<sup>4</sup>

Although this methodology provides us with a simple method to answer the hypothetical question: “What if female workers were paid the same rate of compensation as their female counterparts?”, it says little about the underlying wage distribution. Such decomposition may show that the *average* male worker is paid economic rents, when in fact rents may be larger at the bottom of the wage distribution than at the top of the same distribution, or vice versa. In order to better understand where in the pay distribution differences exist, quantile regression analysis can be used to estimate the following:

$$\ln w_i = X_i \mathbf{b} + F_i \mathbf{d} + e_i,$$

where  $\ln w_i$  is the natural logarithm of the hourly wage of the  $i^{th}$  individual,  $X_i$  is a vector of individual characteristics,  $\mathbf{b}$  is the rate of return to these characteristics,  $F_i$  is a dichotomous dummy variable that equals one if the individual is female,  $\mathbf{d}$

---

<sup>4</sup> Since the estimation of equation (1) may be sensitive to the choice of base group – males in this case – this group can be changed to females. Comparing the results of these separate decompositions gives a lower and higher bound of the unexplained wage differential. Throughout this paper we will use males as the base group. This is the most common methodology employed in the literature, since it is argued that the vector of returns to male characteristics is non-discriminatory and hence acts as the standard to which all others should be compared.

is the payment (or penalty) for being female, and  $e_i$  is the classical stochastic error term.

The limitation of this technique is that it does not permit us to determine the part of the total wage differential that is due to male-female differences in labour market attributes, and the part due to different rates of return to these attributes. The drawback of including a female dummy variable into this equation is that it constrains the returns to all other labour-market characteristics to be equal for both genders. In other words it constrains all variables (with the exception of the female indicator) to have the same coefficient or rate of return for both men and women, and this may bias the true extent of any gender wage differentials. We can, however, combine the decomposition technique with quantile regressions to determine the rent component at various points in the wage distribution. This method was introduced by Mueller (1998).

The difference in the log wage between the males and females is:

$$(2) \quad \overline{\ln w_m^j} - \overline{\ln w_f^j} = \sum b_m^j (\overline{X_m} - \overline{X_f}) + \sum (b_m^j - b_f^j) \overline{X_f}$$

where  $\overline{\ln w_k^j}$  is the mean natural logarithm of the wage for gender  $k$  evaluated at quantile  $j$ ,  $b_k^j$  is a vector of estimated coefficients for gender  $k$  evaluated at quantile  $j$ ,  $\overline{X_k}$  is a vector of average characteristics of gender  $k$  evaluated at the appropriate quantile  $j$ , and  $k = f, m$  denotes females and males, respectively. Finally,  $j = .10, .25, .50, .75, \text{ and } .90$ . The first term on the right hand side is the component of the log wage differential due to differences in endowments between males and females, and is referred to as the justifiable wage or characteristics differential. The second term shows the component due to gender differences in returns to these endowments, and is called the surplus or rent payment. It is this amount that is often attributed to labour market discrimination, although it could be due to other factors such as omitted variable bias.

Since this research has the objective of determining: (1) where in the distribution of pay any gap between genders exists, and (2) how this gap has

changed over time, equations (1) and (2) will be estimated using the Survey of Income and Labour Dynamics (SLID) for the years 1996 and 2005 (the latest year available when this research commenced). The estimation of equation (1) will permit this research to be compared with previous research using the standard decomposition (e.g., Drolet, 2002b), while the estimation of equation (2) will ascertain any gender wage differentials at various points in the wage distribution. The use of two data sets will allow the determination of any changes over this nine-year period. Since gender wage comparisons can be sensitive to model specification (Gunderson, 2006) as well as the choice of dependent variable (e.g., hourly wages, weekly earnings, or annual earnings), different models will be estimated to check for robustness of the results.<sup>5</sup>

### **III. Data**

The data utilized are the Survey of Labour and Income Dynamics (SLID) from 1996 and 2005 (the latest year available at the time of writing). The SLID is a household survey that annually collects data on some 60,000 individuals, excluding residents of the three territories, residents of institutions, and those living on Indian reserves. These exclusions amount to less than 3 per cent of the overall population (1996 SLID Guide).

The sample is limited to include only those between the ages of 16 and 64 who held a paid job at any time during the reference year. We exclude those who are not paid employees (i.e., unpaid family workers and the self-employed) as well as those who were full-time students during the year. Incomplete observations were also eliminated from the sample.

The SLID data set is rich in the background variables including highest level of education obtained, number of employees at the person's employment site, union status, marital status, province or residence, as well as detailed industry and occupation codes. The dataset also includes a measure of full-time,

---

<sup>5</sup> See Gunderson (2006) for a comprehensive review of the methodologies for estimating the gender pay gap as well as the limitations associated with each.



full-year work experience, a better measure of actual work experience than the familiar Mincer proxy, normally used in these types of studies (Drolet, 2002b).

The dependent variable that will be utilized is the composite hourly wage, constructed by Statistics Canada based on the implicit hourly wage for all paid jobs.<sup>6</sup> Doiron and Riddell (1996) do note that inequality in the distribution of hours is responsible for some of the pay gap. Although studying the wage rate (i.e., earnings divided by hours worked) may give is a more accurate measure of the pay gap, these authors note that there is increasing correlation between hours and wage rates. This factor could potentially bias even the results that use the wage rate. We assume that any bias introduced using the hourly wage rate is stable across time, and thus will not affect our results.

The final sample contains 13,032 males and 11,728 females from 1996, and 11,086 and 11,250 females from 2005. In either year these observations represent approximately ten million Canadians.

#### **IV. Results**

Table 1 presents summary statistics for males and females and for the two years, 1996 and 2005. Although these data are only means and standard deviations, they are worth analyzing briefly at this point of the exercise.

Worthy of note is that mean unadjusted hourly wage difference in favour of males has decreased from about .22 log points to .20 log points, or about 2 percentage points. Men continue to have an experience advantage of about four years in both 1996 and 2005. Recall, this is not potential experience, but a better measure of full-time, full-year experience as outlined above. In terms of education, a larger proportion of males than females hold graduate degrees, but males are also more likely to have less than high school. In both years, males are less likely to have completed either a college diploma or a university degree; in

---

<sup>6</sup> This variable is "cmphrw28" in both the 1996 and 2005 SLID. It is calculated using the based on the implicit hourly wage for all paid-worker jobs and weighted using total hours paid for each. The implicit hourly wage at each job is either the hourly wage (if so reported) including commissions, bonuses and tips, or is derived from the other salary measure (e.g., annual) adjusted for the number of hours usually worked.

the former case the gap has narrowed, but has widened dramatically in the latter case.

In terms of job characteristics, males on average have longer tenure at their current jobs and are less likely to hold part-time jobs, but both of these gaps have been closing. Similarly, the proportion of males being covered by collective agreements is higher in both years, but this proportion has narrowed considerably. This is owing to the fact that men were less likely to be covered in 2005 compared to 1996, while female coverage rates have remained practically unchanged. Men are also less likely to work for small firms with less than 20 employees.

Males in our sample are less likely to be married or divorced or separated, and therefore more apt to be single compared to females. Regionally, there are no noticeable differences between the males and females in our sample, nor have they changed over time, both of which are to be expected in nationally representative samples.

Regarding the gender distribution in various occupations, there has been very little change. Somewhat surprisingly, female-dominated occupations such as clerical occupations saw a growth in the number of females in the nine-year period, further increasing the concentration of females. Gaps in participation rates in the trades have also been decreasing, but these have been modest and these occupations have remained largely male-dominated.

Some industries too have become more traditional in regard to gender, with an industry such as construction becoming more male-dominated, and traditional female-dominated industries such as education and health increasing their proportion of females.

Tables 2 through 4 further summarize the data presented in Table 1, looking more closely at gender differences at various quantile levels. To do this, the male and female samples are stacked according to their percentile wage rank, and then divided into groups at +/- 5 percentiles from the percentile (or quantile) of interest. For example, those at the median (i.e.,  $q = .50$ ) include all

those at the 45<sup>th</sup> through 55<sup>th</sup> percentiles of wages in the appropriate male or female wage distribution.<sup>7</sup>

Here we find some interesting differences between males and females at various ranges of the overall wage distribution, although we find very few important differences when we compare the 1996 and 2005 results, Table 2 shows that in both years the log wage differential is higher when we compare the middle ranges of the two distributions, in contrast to when the tails are compared. In the 1996 data, for example, the differential is 0.20 for those around the 10<sup>th</sup> quantile and 0.17 for those around the 90<sup>th</sup> quantile, but about 0.25 for those at the 25<sup>th</sup> and 50<sup>th</sup> quantiles. In 2005, the differences at the 10<sup>th</sup> and 90<sup>th</sup> quantiles are 0.18 and 0.17, respectively; lower than the differences in the 0.21 – 0.24 range at the middle quantiles. These initial results are consistent with the 2003 data provided by the OECD (**reference here!!!**) which show a wage gap in the low-20 per cent range at the 20<sup>th</sup> and 80<sup>th</sup> percentiles.

These data show that the gap has closed the most for those women at or beneath the median income level. The final row in Table 2 shows the evolution of the differences at each quantile (or the difference-in-differences). Here the gap at the median has closed by about three percentage points and by about two percentage points at the 10<sup>th</sup> and 25<sup>th</sup> quantiles, compared less than one percentage point at both the 75<sup>th</sup> and 90<sup>th</sup> quantiles. To view this in a different way, almost all of the closure of the mean gap by 0.18 over the period can be accounted for by the narrowing of the gap at the median or below.

This presentation of the data in Tables 3 and 4 also unmasks some intriguing differences in other variables. Although years of experience favour males by about two years in both tables, this increases to over five year at the 90<sup>th</sup> quantile. In terms of education, women near the 90<sup>th</sup> quantile range are more likely to have completed a post-secondary education (i.e., college or above) compared to males. Thus, it appears that the higher education levels of females

---

<sup>7</sup> Sample sizes here and throughout do not permit us to look at only those individuals at each exact percentile. In fact, sometimes the number of males or females at each percentile value is zero.

may be propelling them to the upper tail of the wage distribution, whereas for males it may be more years of experience.

These data also reveal some surprising results regarding the industry and occupation distribution related to the wage distribution. We do know that women dominate the health occupations, but the data here show that a large proportion of the women here are at the upper tail of the wage distribution during both years. In male-dominated industries such as construction and manufacturing, it is males that predominate at the top of the wage distribution, whereas in the health care and social assistance industry it is females who hold this position.

In sum, the data in Tables 3 and 4 show that there is heterogeneity in the male and female samples and that these differences between genders at various points of the wage distribution could be causing wages to differ in ways in which the standard OLS decompositions are not able to detect.

As a starting point it is important to link the current work with the past work that has been done on this topic. Table 5 presents the decomposition results for the 1996 data using OLS estimates of equation (1). The purpose of this exercise is to compare our results to Drolet (2002b) who uses the same SLID data, but for the year 1997. Drolet also uses the master file of the 1995 SLID whereas we are only able to access the public use microdata file (PUMF) which contains fewer variables than the master file. As a result, we cannot compare all of Drolet's results with ours. These cases are noted in the table.

Given that the SLID data used are only a year apart from those used by Drolet, we would expect the results between these two years to be very close. In fact, the results are almost identical, with differences between the two sets of estimates ranging from -0.7 to 2.0 percentage points. Again, we see the same pattern in our data where the adjusted wage differential decreases as better variables are added to the model. Using only a simple model with potential experience (i.e., the Mincer proxy), its square, education level, and annual earnings data as the dependent variable, females earn an average of 71.4 per cent of what males earn, and the addition of education and potential experience add very little (about three percentage points) in terms of understanding the

unadjusted differential. In other words, differences in education and potential experience do little to explain away the unadjusted earnings gap. Compare this to the case of the second augmented model where females now earn 87.9 per cent of average male earnings. Table 6 extends these results by using the 2005 data and comparing these to the 1996 data in Table 4. Here there is an increase in the adjusted wage differential: up to 88.9 per cent, due to a decrease in the unexplained wage differential. These results, which are quantitatively similar to those in literature, coupled with the results from these studies (e.g., Baker, et al., 1995; Kidd and Shannon, 1997, Drolet, 2002b), indicate two important phenomena. First, the adjusted and unadjusted wage gaps are narrowing over time. Second, the unexplained component of the total differential remains substantial. This latter point implies that we are not able to ascertain why this gap continues to exist using observable characteristics, rather other factors such as absenteeism, work effort, work responsibilities, or even labour-market discrimination – each of which is not included in the data – may be driving this result.

Since the results in our data are stable (i.e., similar to Drolet's), and since our main intention is to gain a better understanding of how the earnings differential has changed throughout the earnings distribution, as well as the cause of these changes, we will proceed with using the PUMF rather than the more comprehensive master data file. In other words, unless there is reason to believe that the omitted variables from the current work have a differential effect on earnings in 2005 compared to 1996, the results will not be biased using the PUMF and we will be able to compare changes across the earnings distribution over time with these data. We perform a number of decompositions to check for the robustness of the results.<sup>8</sup>

---

<sup>8</sup> The statistical program STATA contains a number of programs that are capable of decomposing *mean* earnings differences between two or more groups, males and females in our case. Since we are interested in decomposing the earnings differential at different points in the distribution, these pre-packaged programs are of limited use, and some of the calculations must be done manually. In particular, many of the results in the STATA programs are not weighted. Furthermore, the decompositions in STATA are conducted using the coefficients from the quantile regressions, but the mean values of dependent variables from the entire group of males and females. We will overcome these limitations by performing manual calculations and weight the

Figure 1 shows the main results of the exercise. These are obtained by using the decomposition method in equation (2) where the coefficients are estimated using quantile regressions at five levels, the 10<sup>th</sup>, 25<sup>th</sup>, 50<sup>th</sup> (or median), 75<sup>th</sup>, and 90<sup>th</sup> percentiles of the male and female earnings distributions, as well as the mean values for all males and females that fall within +/- five percentiles from the reference percentile.<sup>9</sup> Thus, for example, at the median, the two means from the male and female distributions that lie from the 45<sup>th</sup> through the 55<sup>th</sup> percentiles are used. The OLS estimates are included for comparison purposes. In each case, the model using the best data possible are used in estimating the model (i.e., augmented model 2 in Tables 5 and 6). The numerical results on which Figure 1 is based are contained in Tables 7 and 8.<sup>10</sup>

There are several interesting results in this chart. First, average female hourly wages as a percentage of male wages increase by one percentage point between 1996 and 2005, from 87.9 per cent to 88.9 per cent.<sup>11</sup> Since these are mean hourly earnings, they do not change across quantiles and therefore are plotted as a horizontal line. These means, however, mask important differences in adjusted wages across the wage distribution. The general pattern is that adjusted wages decrease as the quantile level increases.<sup>12</sup> This holds for both years in our data. For example, in 1996 adjusted female wages at the 10<sup>th</sup>

---

data as well as using the appropriate dependent variables values (i.e., the values at +/- five percentiles from the quantile being evaluated). The downside of doing this manually is that we are not easily able to include standard errors. Still, the estimations that were performed in STATA (despite its limitations) almost always produced coefficients that were significant at the usual levels of significance.

<sup>9</sup> The regression coefficients used to generate these results are contained in Appendix Tables 1 through 4.

<sup>10</sup> There are a variety of weighting schemes that can be used to calculate the differentials based what is considered to be the base (or non-discriminatory) wage for comparison purposes. We follow the convention and use the male weight (i.e.,  $W = 1$ ) as originally suggested by both Oaxaca (1973) and Blinder (1973). Other weighting options are a scheme that uses relative group sample sizes (Cotton, 1988) or using the group of pooled males and females as the group to which comparisons are made (Neumark, 1988). As the weight given to males decreases, this tends to reduce the explained component and increase the unexplained component, although the patterns observed here do no change. Using the male group as the comparator group is the most common weighting scheme in the literature and corresponds to the case where male earnings are considered to be the non-discriminatory earnings to which female earnings are compared.

<sup>11</sup> The adjusted female-male earnings ratio here and throughout the paper is obtained by using the formula  $e^{-x} \cdot 100$  where  $x$  is the unexplained log difference between males and females.

<sup>12</sup> This is equivalent to saying that the unexplained log difference (i.e.,  $x$  in the formula in the previous footnote) increases as the quantile level increases.

quantile were 93.1 per cent of their male counterparts, but only 86.3 per cent at the 90<sup>th</sup> quantile. Moreover, this pattern of declining relative hourly wages remains in the 2005 data, although the line shifts up signifying the increase in relative hourly wages, the exception being at the 10<sup>th</sup> quantile where relative wages declined slightly to 91.3 per cent. What this gap increases only at this low level of income cannot be ascertained from these data. The largest increases were at the 25<sup>th</sup> and 90<sup>th</sup> quantiles as relative wages increased by over 3 percentage points in each case.

Figure 2 presents these same data, but with the influences of occupation and industry removed. Here the pattern changes somewhat with females at either tail of the distribution having higher-than-average female wages, though still lagging behind their male counterparts. Also, adjusted wages are lower than those in Figure 1, suggesting that the inclusion of occupation and industry is important in ascertaining the wage gap. Figure 3 limits the sample to full-year, full-time workers. Here the pattern is almost a mirror image of the results in Figure 2: those in the middle of the distribution tend to have higher adjusted wages compared to those at the tails.

To check for the robustness of the above results, we again estimate equation (2) but this time using annual salary as the dependent variable.<sup>13</sup> Also, since these data show that annual hours worked tend to be higher among males, we look at the adjusted wage gap using models with and without a control for hours. These results are in Figures 4 and 5, respectively. The pattern in Figure 4 is very similar to that in Figure 3 (where we addressed only full-time and full-year workers): namely that it is generally in the tails of the distribution where the relative adjusted compensation is the lowest. The adjusted values in Figure 3 are generally higher since this sample is limited to those with the highest attachment to the labour force. These results together imply that there is something occurring regarding the annual hours of work which is influencing the

---

<sup>13</sup> Weekly wages were also used as the dependent variable in separate regressions. However, since we had to derive this variable using three variables – annual salary, hours worked per year, and weeks worked per year – this introduced a lot of noise into the weekly wages variable so the results were not reliable.

gender wage differential, yet is not captured by these estimates. Figure 5 shows the adjusted female wage differentials using annual wages and salaries, but this time without controlling for annual hours. The results are mostly as expected; the distributions generally shift down, reflecting the fact that hours worked are an important determinant of annual salaries. The exception to this is the region around the 10<sup>th</sup> quantile in 2005, where the adjusted amount does not change when we control for hours worked. This implies that hours worked are not an important determinant of compensation at this part of the salary distribution.

To better ascertain the sources of these differentials, we further decompose the results into the individual factors that contribute to the explained part of the total differential. Here we will limit our result to include only those for hourly wages. This is because these tend to be the most reasonable estimates – at least theoretically – and as such tend to be utilized the most widely in the literature.<sup>14</sup> These results are contained in Tables 7 and 8, respectively. Experience explains about 3-21 per cent of the total differential, depending on the point in the wage distribution and the year. Education level actually worsens the gap in both years (i.e., reduces the explained component), and this educational component increases (in absolute value) between 1996 and 2005 from 2.9 to 4.5 per cent. This could be due to the changing composition of fields of study over this period of time. Drolet (2002b), who uses detailed field of study variables, noted that males tended to be more likely to graduate from fields such as engineering and applied sciences where returns are higher, whereas women were more likely to be in health sciences or education where returns to education are lower. In our data, the negative explained effects of education, especially at the upper quantiles, is owing to the fact that women are more likely to have higher levels of education than males at these quantiles, especially at the bachelor's degree level. Part-time status adds a large contribution to the explained wage gap, but only for those at or below the median in 1996, and for all

---

<sup>14</sup> According to Drolet (2001:5): “. . . pay ratios based on annual earnings do not accurately account for differences in work volume. Even among men and women working full year, full time, the number of hours worked per week varies considerably. . . . Ratios based on hourly wage rates overcome this problem.”



quantile levels in 2005. Industry explains an average of 22 per cent of the gap in 1996 and 16 per cent in 2005, with more of the gap explained at the tails.

The negative occupational influence of the explained component is the result of women being less prevalent than men in occupations such as natural and applied sciences, as well as protective services, all of which have lower hourly wages in our estimates relative to the comparator occupation (those in wholesale, technical, insurance and real estate sales).<sup>15</sup> The negative “explained” effect of part-time work is also due to the higher incidence of women in these occupations, along with a negative hourly wage premium (i.e., penalty) to part-time work.<sup>16</sup>

It is also worthy of note that the unexplained portion of the total wage differential fell over the period, at least in these estimates. The only exception is for those around the 10<sup>th</sup> quantile. This continues the trend noted by Baker, et al. (1995) who observed this in their data covering the two decades between 1970 and 1990.

## **V. Conclusions**

We have learned several interesting things in the preceding analysis. First, there has been a modest improvement in the average adjusted female hourly wage between 1996 and 2005: an increase of one percentage point to 88.9 per cent of the mean male hourly wage. Second, the male-female wage differential is not constant across the hourly wage distribution: females at the lower end of the distribution tend to do relatively better compared to their male counterparts than those at the upper tail of the distribution. Third, the pattern is sensitive to model specification regarding the choice of full-time, full-year workers, annual salary versus hourly wage, etc. Fourth, this pattern has changed in the nine-year period analyzed. In particular, in 1996 we see that the adjusted wage differential

---

<sup>15</sup> This comparator group was chosen arbitrarily, but its choice in no way influences the results in the decompositions.

<sup>16</sup> It should be noted that that affects of individual components within an each category – occupation, for example, are extremely sensitive to the omitted variable. This, however, does not change the net explained and unexplained components at each quantile level.

decreasing as we move through the wage distribution: females around the 10<sup>th</sup> quantile earn about 93 per cent of observationally equivalent males, whereas those at the 90<sup>th</sup> quantile earn only 86 per cent as much. By 2005, only those at the 10<sup>th</sup> and 75<sup>th</sup> quantiles see their relative wages fall, and then only modestly, while all other groups experience an increase relative to males. This change is most dramatic for those around the 25<sup>th</sup> and 90<sup>th</sup> quantiles as female wages relative to male wages increased over three percentage points in each case. Fifth, the explained component of hourly wages tends to be higher at the lower end of the wage distribution.

The policy implications of the preceding analysis are not clear. The fact that the relative average female hourly wage has improved over the period is encouraging, especially given the fact that the male hourly wage has also increased. That adjusted relative wages tend to be lower in the upper tail of the wage distribution suggests that there is more unobserved heterogeneity here than at other parts of the distribution. This is not surprising. At the lower tail, individuals are more likely to be waged workers, with little responsibility and the protection of minimum wage laws. As we move up the distribution, there are greater adjustments to wages as the result of qualitative differences in education, experience, etc., as well as job-specific responsibilities. None of these can be controlled for in the data. Future research might delve more deeply into these factors.

## References

- Baker, M., and N. Fortin. (2001). Occupational Gender Composition of Wages in Canada, 1987-1988. *Canadian Journal of Economics* 34, 345-76.
- Baker, M., Benjamin, D., Desaulniers, A., & Grant, M. (1995). The distribution of the male/female earnings differential, 1970-1990. *Canadian Journal of Economics* 28, 479-501.
- Blinder, Alan S. (1973). Wage Discrimination: Reduced Form and Structural Estimates. *Journal of Human Resources* 8, 436-55.
- Chaykowski, R., & Powell, L. (1999). Women and the Labour Market: Recent Trends and Policy Issues. *Canadian Public Policy* 25 (Supplement 1), S1-25.
- Christie, P., & Shannon, M. (2001). Educational attainment and the gender wage gap: evidence from the 1986 and 1991 Canadian Censuses. *Economics of Education Review* 20, 165-80.
- Christofides, L., & Swidinsky, R. (1994). Wage Determination by Gender and Visible Minority Status: Evidence from the 1989 LMAS. *Canadian Public Policy* 20, 34-51.
- Cotton, J. (1988). On the Decomposition of Wage Differentials. *The Review of Economics and Statistics* 70, 236-43.
- Day, K., & Devlin, R. A. (1997). Can volunteer work help explain the male-female earnings gap? *Applied Economics* , 29, 707-21.
- Doiron, D., & Riddell, C. (1994). The Impact of Unionization on Male-Female Earnings Differences in Canada. *Journal of Human Resources* 29, 504-34.
- Drolet, Marie. 2001. The Male-Female Wage Gap. *Perspectives on Labour and Income* 12, 5-13.
- Drolet, Marie. (2002a). Can the Workplace Explain Canadian Gender Pay Differentials? *Canadian Public Policy* 28, S41-S63.
- Drolet, Marie. (2002b). New Evidence on Gender Pay Differentials: Does Measurement Matter? *Canadian Public Policy* 28, 1-16.
- Finnie, R. (2000). From School to Work: The Evolution of Early Market Outcomes of Canadian Postsecondary Graduates. *Canadian Public Policy* 26, 197-224.

- Finnie, R., & Wannell, T. (1996). A longitudinal, cross-cohort analysis of the gender earnings gap among recent university graduates. *Canadian Journal of Economics* 29 (Special Issue April), S114-20.
- Fortin, N., & Huberman, M. (2002). Occupational Gender Segregation and Women's Wages in Canada: An Historical Perspective. *Canadian Public Policy* 28 (Supplement 1), S11-39.
- Frenette, M., & Coulombe, S. (2007). "Has Higher Education among Young Women Substantially Reduced the Gender Gap in Employment and Earnings?" Analytical Studies Branch Research Paper Series. Catalogue no. 11F0019MIE. Ottawa: Statistics Canada.
- Gunderson, M. (2006). Male-female Wage Differentials: How Can That Be? *Canadian Journal of Economics* 39, 1-21.
- Kidd, Michael, and Michael Shannon. (1996). The Gender Wage Gap: A Comparison of Australia and Canada. *Industrial and Labour Relations Review* 49, 829-46.
- Leung, D. (2006). The male/female earnings gap and female self-employment. *Journal of Socio-Economics* 35, 759-79.
- Maki, D., & Ng, I. (1990). Effects of trade unions on the earnings differential between males and females: Canadian Evidence. *Canadian Journal of Economics* 23, 305-11.
- Mueller, R. E. (1998). Public-Private Sector Wage Differentials in Canada: Evidence from Quantile Regressions. *Economics Letters* 60, 229-35.
- Myles, J., Hsu, F., Picot, G., & Myers, K. (2007). Why Did Employment and Earnings Rise among Lone Mothers in Canada during the 1980s and 1990s? *Canadian Public Policy* 33, 147-72.
- Neumark, D. (1988). Employers' Discriminatory Behavior and the Estimation of Wage Discrimination. *Journal of Human Resources* 23, 279-95.
- Ng, Y. C. (2003). Earnings and "skill" allocation in the Canadian labor market. *International Journal of Manpower* 24, 964-80.
- Oaxaca, R. (1973). Male-Female Wage Differentials in Urban Labor Markets. *International Economic Review* 14, 693-709.
- Robb, R.E. 1987. "Equal Pay for Work of Equal Value: Issues and Policies," *Canadian Public Policy* 13, 445-61.

- Shapiro, D., & Stelcner, M. (1987). The Persistence of the Male-Female Earnings Gap in Canada, 1970-1980: The Impact of Equal Pay Laws and Language Policies. *Canadian Public Policy* 13, 462-76.
- Simpson, W. (1990). Starting Even? Job Mobility and the Wage Gap Between Young Single Males and Females. *Applied Economics* 22, 723-37.
- Statistics Canada. (2006). *Women in Canada: A Gender-based Statistical Report*. Catalogue No. 89-503-XPE. Ottawa: Statistics Canada.
- Warman, C., Woolley, F., & Worswick, C. (2005). The Evolution of Male-Female Wages Differentials in Canadian Universities: 1970-2001. *Queen's Economics Department Working Paper No. 1099*.
- Zhang, X. (2007). *Gender Differences in Quits and Absenteeism in Canada*. Analytical Studies Branch Research Paper Series. Catalogue No. 11F0019MIE. Ottawa: Statistics Canada.

Table 1: Summary Statistics, Males and Females, 1996 and 2005

	1996				2005			
	Males		Females		Males		Females	
	Mean	SD	Mean	SD	Mean	SD	Mean	SD
Log of hourly wage	2.78	0.47	2.56	0.48	2.98	0.48	2.77	0.48
Actual experience	17.37	11.37	13.18	9.38	17.65	11.94	13.72	10.498
<i>Highest level of Education</i>								
Less than high school	0.193	0.395	0.140	0.347	0.145	0.352	0.096	0.295
High school completed*	0.184	0.387	0.211	0.408	0.170	0.375	0.164	0.370
Some post-secondary	0.133	0.340	0.112	0.316	0.127	0.333	0.119	0.324
College diploma	0.327	0.469	0.363	0.481	0.361	0.480	0.389	0.488
Bachelor's degree completed	0.106	0.308	0.129	0.335	0.130	0.337	0.176	0.381
Graduate school completed	0.056	0.229	0.044	0.204	0.065	0.246	0.052	0.223
Don't know level of education	0.001	0.030	0.001	0.027	0.002	0.046	0.003	0.055
<i>Job characteristics</i>								
Tenure (in weeks)	107	108	91	91	109	111	97	100
Part-time job	0.049	0.217	0.238	0.426	0.048	0.215	0.196	0.397
Union/covered by CA	0.375	0.484	0.330	0.470	0.339	0.473	0.333	0.471
Not unionized*	0.618	0.486	0.664	0.472	0.649	0.477	0.660	0.474
Don't know if covered by CA	0.006	0.079	0.006	0.077	0.012	0.111	0.008	0.089
< 20 employees at place of work*	0.315	0.465	0.374	0.484	0.288	0.453	0.334	0.472
20-99 employees	0.305	0.460	0.296	0.457	0.302	0.459	0.308	0.461
100-499 employees	0.225	0.418	0.196	0.397	0.238	0.426	0.207	0.405
500-999 employees	0.063	0.244	0.060	0.237	0.050	0.218	0.049	0.216
1000 or greater employees	0.073	0.261	0.061	0.240	0.082	0.275	0.073	0.259
Don't know number of employees	0.018	0.133	0.013	0.113	0.040	0.197	0.030	0.170
<i>Marital Status</i>								
Married*	0.663	0.473	0.695	0.460	0.639	0.480	0.654	0.476
Divorced/seperated	0.070	0.254	0.109	0.312	0.071	0.257	0.119	0.323
Single	0.267	0.442	0.196	0.397	0.290	0.454	0.227	0.419
<i>Region</i>								
British Columbia	0.130	0.336	0.130	0.336	0.114	0.317	0.118	0.322
Alberta	0.094	0.292	0.096	0.295	0.104	0.305	0.107	0.309
Prairies	0.064	0.245	0.066	0.247	0.061	0.238	0.065	0.246
Ontario*	0.377	0.485	0.387	0.487	0.389	0.488	0.377	0.485
Quebec	0.254	0.436	0.246	0.431	0.246	0.431	0.243	0.429
Atlantic provinces	0.080	0.271	0.075	0.264	0.075	0.263	0.078	0.269
<i>Occupation</i>								
Senior Management	0.011	0.104	0.003	0.054	0.007	0.081	0.002	0.049
Other Management	0.102	0.302	0.072	0.259	0.080	0.271	0.062	0.242
Prof Occ in Business/Finance	0.021	0.144	0.028	0.166	0.018	0.134	0.032	0.175
Financial, Secretarial & Admin Occ	0.018	0.131	0.129	0.336	0.018	0.135	0.098	0.297
Clerical Occupations	0.062	0.241	0.151	0.358	0.071	0.256	0.182	0.386
Natural & Applied Science	0.081	0.273	0.026	0.159	0.122	0.327	0.029	0.028
Prof Occ in Health	0.005	0.070	0.052	0.223	0.006	0.075	0.045	0.046
Tech & Assisting Health in Health	0.008	0.091	0.049	0.217	0.011	0.102	0.058	0.057
Social Science, Govt, Religion	0.018	0.132	0.035	0.185	0.022	0.146	0.061	0.061
Teachers/Professors	0.032	0.176	0.060	0.238	0.032	0.176	0.059	0.060
Art, Culture, Rec & Sport	0.016	0.124	0.025	0.156	0.016	0.126	0.024	0.152
Wholesale, Technical, Ins, Real Estate*	0.028	0.164	0.022	0.146	0.029	0.169	0.022	0.146
Retail Salespersons	0.026	0.158	0.083	0.277	0.040	0.195	0.078	0.268
Chefs/Cooks & Food & Bev	0.020	0.139	0.055	0.228	0.020	0.141	0.041	0.198

... cont.

Table 1: Summary Statistics, Males and Females, 1996 and 2005, continued

	1996				2005			
	Males		Females		Males		Females	
	Mean	SD	Mean	SD	Mean	SD	Mean	SD
Protective Services	0.027	0.163	0.006	0.080	0.035	0.183	0.004	0.065
Childcare/Home Supp	0.001	0.036	0.035	0.185	0.000	0.019	0.027	0.161
Sales and Service	0.078	0.269	0.086	0.280	0.065	0.246	0.096	0.294
Contractors/Supervisors in Trades/Trans	0.016	0.127	0.000	0.016	0.018	0.133	0.001	0.024
Construction Trades	0.036	0.186	0.000	0.020	0.033	0.179	0.001	0.027
Other Trades Occupations	0.110	0.313	0.006	0.075	0.107	0.310	0.005	0.070
Transport & Equipment Operators	0.069	0.254	0.006	0.075	0.063	0.242	0.006	0.077
Trades Helpers ,Construction	0.045	0.207	0.003	0.056	0.043	0.204	0.006	0.080
Unique to Primary Industry	0.043	0.202	0.010	0.101	0.034	0.182	0.009	0.096
Machine Ops/Manufacturing	0.100	0.300	0.037	0.190	0.096	0.294	0.040	0.197
Processing,Manufacturing	0.028	0.164	0.017	0.130	0.014	0.119	0.012	0.108
<i>Industry</i>								
Agriculture	0.015	0.120	0.010	0.098	0.010	0.100	0.009	0.095
Forestry, Fishing, Mining, O & G	0.042	0.201	0.008	0.087	0.031	0.174	0.007	0.084
Utilities	0.016	0.126	0.007	0.084	0.017	0.129	0.006	0.079
Construction	0.086	0.280	0.015	0.122	0.088	0.283	0.012	0.107
Manufacturing	0.241	0.427	0.102	0.303	0.228	0.420	0.093	0.291
Trade*	0.132	0.339	0.149	0.356	0.146	0.353	0.154	0.361
Transportion & Warehousing	0.072	0.259	0.022	0.148	0.063	0.243	0.026	0.158
Finance, Ins, Real Est & Leasing	0.044	0.206	0.078	0.268	0.040	0.196	0.081	0.273
Prof, Scientific, and Tech Services	0.037	0.190	0.052	0.222	0.056	0.229	0.051	0.220
Business, Building and Support Services	0.026	0.160	0.024	0.152	0.040	0.197	0.037	0.188
Educational Services	0.054	0.226	0.105	0.307	0.050	0.218	0.111	0.314
Health Care & Social Assistance	0.031	0.174	0.189	0.392	0.038	0.190	0.199	0.399
Information, Culture & Recreation	0.040	0.195	0.046	0.210	0.044	0.206	0.043	0.202
Accomodation and Food Services	0.042	0.200	0.083	0.275	0.037	0.189	0.073	0.261
Other Services	0.037	0.190	0.041	0.199	0.032	0.175	0.039	0.193
Public Admin	0.085	0.279	0.069	0.254	0.079	0.270	0.059	0.236
Sample Size	13032		11728		11086		11250	

Table 2: Unadjusted Log Wage Differences and Growth Rates at +/- Five Percentiles, 1996 & 2005

		1996					
		Mean	q=.10	q=.25	q=.50	q=.75	q=.90
Male		2.781	2.123	2.446	2.814	3.111	3.355
Female		2.558	1.924	2.188	2.566	2.901	3.176
Differential		0.222	0.199	0.258	0.248	0.210	0.179

		2005					
		Mean	q=.10	q=.25	q=.50	q=.75	q=.90
Male		2.978	2.305	2.636	2.978	3.312	3.583
Female		2.773	2.126	2.397	2.761	3.105	3.413
Differential		0.205	0.178	0.239	0.217	0.207	0.170

		Wage Growth, 1996 to 2005					
		Mean	q=.10	q=.25	q=.50	q=.75	q=.90
Male		0.197	0.182	0.190	0.163	0.201	0.228
Female		0.215	0.203	0.209	0.194	0.204	0.237
Differential		-0.018	-0.021	-0.019	-0.031	-0.003	-0.009



Table 3: Summary Statistics, Mean and Various Quantiles (+/- 5 percentiles), Males and Females, 1996

	Mean		q=.10		q=.25		q=.50		q=.75		q=.90	
	Male	Female	Male	Female	Male	Female	Male	Female	Male	Female	Male	Female
Log of hourly wage	2.78	2.56	2.12	1.92	2.45	2.19	2.81	2.57	3.11	2.90	3.35	3.18
Actual experience	17.37	13.18	10.45	8.70	13.93	10.83	18.77	13.42	20.68	15.44	22.19	16.81
Less than high school	0.193	0.140	0.278	0.274	0.234	0.222	0.211	0.106	0.141	0.063	0.064	0.029
High school completed	0.184	0.211	0.236	0.277	0.212	0.248	0.189	0.226	0.174	0.189	0.102	0.104
Some post-secondary	0.133	0.112	0.167	0.129	0.153	0.112	0.135	0.122	0.115	0.099	0.097	0.064
College diploma	0.327	0.363	0.256	0.266	0.323	0.372	0.351	0.408	0.384	0.468	0.367	0.378
Bachelor's degree completed	0.106	0.129	0.041	0.051	0.053	0.041	0.087	0.108	0.113	0.136	0.250	0.299
Graduate school completed	0.056	0.044	0.021	0.003	0.021	0.005	0.026	0.029	0.072	0.046	0.120	0.126
Don't know level of education	0.001	0.001	0.002	0.000	0.003	0.000	0.000	0.001	0.000	0.000	0.000	0.000
Tenure (in weeks)	107	91	37	34	59	57	115	89	150	118	176	143
Part-time job	0.049	0.238	0.112	0.399	0.059	0.232	0.029	0.175	0.014	0.169	0.023	0.188
Union/covered by CA	0.375	0.330	0.140	0.059	0.219	0.154	0.451	0.364	0.614	0.550	0.515	0.587
Not unionized	0.618	0.664	0.858	0.940	0.772	0.844	0.546	0.626	0.384	0.442	0.485	0.412
Don't know if covered by CA	0.006	0.006	0.002	0.001	0.009	0.002	0.003	0.010	0.002	0.008	0.001	0.001
< 20 employees at place of work	0.315	0.374	0.523	0.604	0.437	0.473	0.267	0.341	0.177	0.247	0.139	0.168
20-99 employees	0.305	0.296	0.289	0.293	0.340	0.304	0.358	0.332	0.272	0.253	0.267	0.296
100-499 employees	0.225	0.196	0.113	0.079	0.138	0.185	0.255	0.226	0.320	0.257	0.312	0.259
500-999 employees	0.063	0.060	0.027	0.008	0.038	0.019	0.049	0.051	0.092	0.108	0.121	0.103
1000 or greater employees	0.073	0.061	0.022	0.003	0.028	0.015	0.057	0.041	0.119	0.110	0.150	0.159
Don't know number of employees	0.018	0.013	0.026	0.013	0.020	0.004	0.015	0.011	0.020	0.024	0.011	0.014
Married	0.663	0.695	0.408	0.627	0.573	0.666	0.694	0.709	0.770	0.735	0.848	0.730
Divorced/seperated	0.070	0.109	0.050	0.104	0.064	0.114	0.078	0.124	0.075	0.104	0.053	0.108
Single	0.267	0.196	0.543	0.269	0.363	0.219	0.228	0.168	0.155	0.161	0.100	0.162
British Columbia	0.130	0.130	0.119	0.096	0.122	0.117	0.102	0.106	0.181	0.192	0.153	0.149
Alberta	0.094	0.096	0.094	0.099	0.096	0.114	0.090	0.106	0.090	0.076	0.077	0.095
Prairies	0.064	0.066	0.090	0.076	0.068	0.084	0.063	0.070	0.053	0.050	0.043	0.043
Ontario	0.377	0.387	0.328	0.335	0.345	0.371	0.420	0.365	0.377	0.427	0.431	0.443
Quebec	0.254	0.246	0.267	0.300	0.257	0.233	0.256	0.280	0.244	0.214	0.253	0.224
Atlantic provinces	0.080	0.075	0.101	0.093	0.112	0.082	0.070	0.073	0.054	0.042	0.043	0.046
Senior Management	0.011	0.003	0.003	0.002	0.001	0.001	0.015	0.002	0.010	0.002	0.013	0.005
Other Management	0.102	0.072	0.070	0.028	0.061	0.051	0.094	0.061	0.100	0.087	0.196	0.100
Prof Occ in Business/Finance	0.021	0.028	0.007	0.003	0.015	0.011	0.025	0.036	0.026	0.041	0.026	0.054
Financial, Secretarial & Admin Occ	0.018	0.129	0.011	0.026	0.014	0.079	0.023	0.204	0.026	0.179	0.026	0.101
Clerical Occupations	0.062	0.151	0.094	0.043	0.083	0.162	0.096	0.267	0.038	0.169	0.027	0.060
Natural & Applied Science	0.081	0.026	0.023	0.004	0.039	0.024	0.062	0.008	0.101	0.046	0.177	0.048
Prof Occ in Health	0.005	0.052	0.001	0.000	0.001	0.007	0.001	0.022	0.014	0.072	0.009	0.201
Tech & Assisting Health in Health	0.008	0.049	0.003	0.014	0.006	0.041	0.007	0.074	0.010	0.087	0.010	0.067
Social Science, Govt, Religion	0.018	0.035	0.009	0.008	0.010	0.016	0.012	0.036	0.008	0.062	0.052	0.066
Teachers/Professors	0.032	0.060	0.001	0.006	0.004	0.012	0.015	0.023	0.061	0.067	0.090	0.174
Art, Culture, Rec & Sport	0.016	0.025	0.006	0.011	0.019	0.026	0.007	0.020	0.024	0.035	0.017	0.031
Wholesale, Technical, Ins, Real Estate	0.028	0.022	0.015	0.009	0.039	0.014	0.031	0.022	0.036	0.022	0.024	0.022
Retail Salespersons	0.026	0.083	0.059	0.277	0.030	0.143	0.026	0.036	0.010	0.014	0.004	0.004
Chefs/Cooks & Food & Bev	0.020	0.055	0.065	0.212	0.026	0.057	0.009	0.020	0.001	0.014	0.001	0.003
Protective Services	0.027	0.006	0.015	0.002	0.023	0.010	0.017	0.002	0.030	0.012	0.050	0.015
Childcare/Home Supp	0.001	0.035	0.001	0.035	0.001	0.047	0.002	0.031	0.000	0.031	0.000	0.011
Sales and Service	0.078	0.086	0.173	0.190	0.119	0.135	0.043	0.066	0.033	0.032	0.007	0.007
Contractors/Supervisors in Trades/Trans	0.016	0.000	0.004	0.001	0.004	0.000	0.016	0.000	0.027	0.001	0.027	0.001
Construction Trades	0.036	0.000	0.022	0.000	0.047	0.000	0.034	0.002	0.048	0.000	0.012	0.000
Other Trades Occupations	0.110	0.006	0.057	0.005	0.106	0.012	0.131	0.000	0.147	0.004	0.108	0.001
Transport & Equipment Operators	0.069	0.006	0.064	0.003	0.092	0.013	0.118	0.006	0.046	0.007	0.021	0.002
Trades Helpers ,Construction	0.045	0.003	0.084	0.001	0.050	0.003	0.040	0.005	0.035	0.000	0.010	0.004
Unique to Primary Industry	0.043	0.010	0.077	0.019	0.058	0.019	0.028	0.006	0.027	0.000	0.021	0.001
Machine Ops/Manufacturing	0.100	0.037	0.094	0.063	0.116	0.067	0.110	0.032	0.125	0.015	0.058	0.019
Processing,Manufacturing	0.028	0.017	0.042	0.039	0.036	0.048	0.038	0.012	0.017	0.001	0.013	0.002
Agriculture	0.015	0.010	0.049	0.017	0.022	0.025	0.012	0.004	0.000	0.001	0.002	0.000
Forestry, Fishing, Mining, O & G	0.042	0.008	0.019	0.001	0.032	0.007	0.033	0.011	0.059	0.015	0.050	0.015
Utilities	0.016	0.007	0.000	0.000	0.004	0.000	0.010	0.005	0.033	0.021	0.046	0.013
Construction	0.086	0.015	0.064	0.004	0.092	0.007	0.092	0.040	0.114	0.005	0.050	0.004
Manufacturing	0.241	0.102	0.195	0.100	0.254	0.155	0.257	0.107	0.270	0.076	0.232	0.060
Trade	0.132	0.149	0.238	0.311	0.156	0.244	0.147	0.112	0.067	0.069	0.054	0.048
Transportion & Warehousing	0.072	0.022	0.058	0.007	0.079	0.031	0.140	0.025	0.058	0.039	0.044	0.016
Finance, Ins, Real Est & Leasing	0.044	0.078	0.051	0.018	0.047	0.054	0.035	0.129	0.041	0.053	0.058	0.059
Prof, Scientific, and Tech Services	0.037	0.052	0.013	0.013	0.012	0.065	0.033	0.060	0.030	0.062	0.061	0.059
Business, Building and Support Services	0.026	0.024	0.056	0.041	0.043	0.018	0.022	0.026	0.012	0.013	0.007	0.011
Educational Services	0.054	0.105	0.009	0.019	0.018	0.030	0.034	0.070	0.090	0.148	0.129	0.207
Health Care & Social Assistance	0.031	0.189	0.017	0.047	0.027	0.114	0.025	0.218	0.035	0.294	0.029	0.328
Information, Culture & Recreation	0.040	0.046	0.025	0.030	0.047	0.034	0.029	0.051	0.042	0.075	0.058	0.048
Accomodation and Food Services	0.042	0.083	0.126	0.315	0.049	0.105	0.021	0.028	0.004	0.009	0.007	0.001
Other Services	0.037	0.041	0.052	0.058	0.070	0.073	0.028	0.052	0.026	0.013	0.011	0.015
Public Admin	0.085	0.069	0.029	0.019	0.048	0.037	0.083	0.064	0.117	0.108	0.161	0.115
Sample Size (unweighted)	13,032	11,728	1,491	1,391	1,572	1,317	1,384	1,217	1,420	1,119	1,295	1,094
Sample Size (weighted)	5,203,538	4,657,358	540,278	484,044	572,021	459,805	573,488	478,016	592,918	515,541	570,358	511,909
% of weighted sample	52.77	47.23	52.74	47.26	55.44	44.56	54.54	45.46	53.49	46.51	52.70	47.30

Table 4: Summary Statistics, Mean and Various Quantiles (+/- 5 percentiles), Males and Females, 2005

	Mean		q=.10		q=.25		q=.50		q=.75		q=.90	
	Male	Female	Male	Female	Male	Female	Male	Female	Male	Female	Male	Female
Log of hourly wage	2.98	2.77	2.30	2.13	2.64	2.40	2.98	2.76	3.31	3.10	3.58	3.41
Actual experience	17.65	13.72	10.84	8.64	14.84	10.94	18.57	13.67	20.39	16.68	21.98	16.93
Less than high school	0.145	0.096	0.275	0.238	0.205	0.151	0.126	0.067	0.063	0.029	0.035	0.011
High school completed	0.170	0.164	0.220	0.233	0.249	0.212	0.186	0.157	0.133	0.136	0.086	0.059
Some post-secondary	0.127	0.119	0.163	0.179	0.137	0.154	0.132	0.116	0.085	0.108	0.094	0.069
College diploma	0.361	0.389	0.267	0.291	0.311	0.370	0.405	0.460	0.477	0.442	0.356	0.364
Bachelor's degree completed	0.130	0.176	0.059	0.045	0.070	0.075	0.112	0.169	0.171	0.231	0.268	0.368
Graduate school completed	0.065	0.052	0.015	0.009	0.024	0.031	0.037	0.028	0.070	0.053	0.160	0.126
Don't know level of education	0.002	0.003	0.001	0.004	0.004	0.007	0.002	0.002	0.001	0.001	0.001	0.003
Tenure (in weeks)	109	97	47	39	71	66	117	98	141	124	161	144
Part-time job	0.048	0.196	0.111	0.311	0.042	0.244	0.028	0.217	0.008	0.120	0.018	0.131
Union/covered by CA	0.339	0.333	0.149	0.105	0.221	0.171	0.383	0.382	0.463	0.494	0.436	0.576
Not unionized	0.649	0.660	0.837	0.883	0.772	0.824	0.595	0.610	0.530	0.492	0.555	0.421
Don't know if covered by CA	0.012	0.008	0.014	0.012	0.007	0.004	0.023	0.008	0.007	0.013	0.009	0.003
< 20 employees at place of work	0.288	0.334	0.462	0.482	0.364	0.424	0.279	0.312	0.208	0.258	0.173	0.136
20-99 employees	0.302	0.308	0.313	0.305	0.350	0.333	0.314	0.349	0.300	0.297	0.272	0.277
100-499 employees	0.238	0.207	0.147	0.159	0.193	0.192	0.253	0.215	0.261	0.244	0.267	0.233
500-999 employees	0.050	0.049	0.026	0.013	0.030	0.013	0.043	0.052	0.062	0.061	0.091	0.114
1000 or greater employees	0.082	0.073	0.014	0.007	0.028	0.016	0.060	0.043	0.118	0.106	0.158	0.199
Don't know number of employees	0.040	0.030	0.039	0.035	0.035	0.022	0.051	0.027	0.051	0.034	0.038	0.040
Married	0.639	0.654	0.394	0.553	0.517	0.567	0.702	0.688	0.734	0.707	0.794	0.695
Divorced/seperated	0.639	0.654	0.046	0.101	0.086	0.168	0.070	0.109	0.072	0.113	0.081	0.113
Single	0.071	0.119	0.560	0.346	0.397	0.265	0.228	0.203	0.194	0.180	0.124	0.191
British Columbia	0.114	0.118	0.117	0.146	0.097	0.145	0.118	0.126	0.137	0.120	0.119	0.111
Alberta	0.104	0.107	0.097	0.086	0.105	0.112	0.103	0.098	0.118	0.111	0.100	0.119
Prairies	0.061	0.065	0.076	0.073	0.060	0.072	0.063	0.070	0.053	0.056	0.045	0.060
Ontario	0.389	0.377	0.332	0.318	0.344	0.317	0.400	0.376	0.438	0.398	0.471	0.416
Quebec	0.246	0.243	0.254	0.268	0.290	0.252	0.250	0.258	0.189	0.251	0.193	0.205
Atlantic provinces	0.075	0.078	0.119	0.100	0.097	0.089	0.064	0.064	0.053	0.048	0.047	0.067
Senior Management	0.007	0.002	0.002	0.000	0.001	0.000	0.000	0.000	0.004	0.002	0.015	0.006
Other Management	0.080	0.062	0.028	0.019	0.039	0.031	0.044	0.056	0.081	0.065	0.201	0.121
Prof Occ in Business/Finance	0.018	0.032	0.009	0.001	0.003	0.005	0.013	0.023	0.028	0.065	0.041	0.075
Financial, Secretarial & Admin Occ	0.018	0.098	0.006	0.027	0.011	0.061	0.019	0.144	0.025	0.151	0.026	0.045
Clerical Occupations	0.071	0.182	0.085	0.088	0.082	0.196	0.086	0.287	0.049	0.200	0.021	0.067
Natural & Applied Science	0.122	0.029	0.032	0.001	0.058	0.009	0.090	0.015	0.203	0.052	0.235	0.066
Prof Occ in Health	0.006	0.045	0.000	0.001	0.001	0.001	0.008	0.014	0.012	0.049	0.006	0.222
Tech & Assisting Health in Health	0.011	0.058	0.002	0.015	0.016	0.048	0.015	0.082	0.008	0.054	0.001	0.063
Social Science, Govt, Religion	0.022	0.061	0.013	0.013	0.005	0.045	0.021	0.074	0.038	0.092	0.035	0.088
Teachers/Professors	0.032	0.059	0.004	0.005	0.017	0.013	0.029	0.047	0.047	0.097	0.085	0.129
Art, Culture, Rec & Sport	0.016	0.024	0.013	0.010	0.010	0.019	0.012	0.018	0.020	0.036	0.022	0.036
Wholesale, Technical, Ins, Real Estate	0.029	0.022	0.018	0.009	0.015	0.026	0.053	0.026	0.040	0.021	0.031	0.037
Retail Salespersons	0.040	0.078	0.106	0.277	0.038	0.147	0.039	0.019	0.012	0.014	0.010	0.002
Chefs/Cooks & Food & Bev	0.020	0.041	0.057	0.109	0.026	0.062	0.012	0.013	0.006	0.008	0.002	0.001
Protective Services	0.035	0.004	0.039	0.006	0.032	0.004	0.023	0.004	0.052	0.005	0.059	0.006
Childcare/Home Supp	0.000	0.027	0.000	0.035	0.001	0.025	0.000	0.051	0.000	0.024	0.000	0.005
Sales and Service	0.065	0.096	0.155	0.248	0.089	0.158	0.050	0.065	0.006	0.017	0.007	0.013
Contractors/Supervisors in Trades/Trans	0.018	0.001	0.003	0.000	0.006	0.001	0.017	0.000	0.027	0.002	0.045	0.000
Construction Trades	0.033	0.001	0.028	0.000	0.046	0.001	0.037	0.001	0.029	0.001	0.013	0.001
Other Trades Occupations	0.107	0.005	0.073	0.005	0.101	0.013	0.145	0.002	0.167	0.005	0.066	0.001
Transport & Equipment Operators	0.063	0.006	0.054	0.004	0.106	0.012	0.079	0.012	0.026	0.004	0.011	0.001
Trades Helpers ,Construction	0.043	0.006	0.085	0.011	0.081	0.018	0.046	0.007	0.013	0.004	0.004	0.000
Unique to Primary Industry	0.034	0.009	0.066	0.025	0.046	0.023	0.032	0.002	0.021	0.000	0.014	0.000
Machine Ops/Manufacturing	0.096	0.040	0.091	0.056	0.154	0.066	0.108	0.031	0.080	0.028	0.048	0.014
Processing,Manufacturing	0.014	0.012	0.030	0.035	0.016	0.016	0.020	0.006	0.004	0.003	0.000	0.002
Agriculture	0.010	0.009	0.037	0.029	0.016	0.018	0.007	0.005	0.000	0.000	0.002	0.000
Forestry, Fishing, Mining, O & G	0.031	0.007	0.011	0.001	0.025	0.010	0.032	0.006	0.038	0.008	0.035	0.008
Utilities	0.017	0.006	0.001	0.000	0.001	0.000	0.012	0.005	0.021	0.015	0.060	0.014
Construction	0.088	0.012	0.078	0.002	0.109	0.017	0.110	0.022	0.095	0.007	0.055	0.004
Manufacturing	0.228	0.093	0.152	0.096	0.277	0.106	0.264	0.094	0.235	0.089	0.174	0.047
Trade	0.146	0.154	0.289	0.360	0.188	0.270	0.123	0.119	0.081	0.067	0.082	0.037
Transportion & Warehousing	0.063	0.026	0.044	0.011	0.055	0.016	0.084	0.037	0.035	0.052	0.045	0.019
Finance, Ins, Real Est & Leasing	0.040	0.081	0.029	0.018	0.025	0.068	0.038	0.118	0.042	0.089	0.049	0.084
Prof, Scientific, and Tech Services	0.056	0.051	0.027	0.006	0.029	0.033	0.042	0.055	0.100	0.068	0.079	0.064
Business, Building and Support Services	0.040	0.037	0.117	0.050	0.053	0.066	0.029	0.019	0.010	0.017	0.013	0.008
Educational Services	0.050	0.111	0.008	0.027	0.027	0.044	0.043	0.135	0.056	0.165	0.113	0.172
Health Care & Social Assistance	0.038	0.199	0.008	0.070	0.032	0.125	0.057	0.255	0.031	0.198	0.024	0.348
Information, Culture & Recreation	0.044	0.043	0.032	0.044	0.032	0.048	0.049	0.031	0.045	0.057	0.065	0.057
Accomodation and Food Services	0.037	0.073	0.112	0.234	0.064	0.099	0.017	0.034	0.007	0.016	0.006	0.003
Other Services	0.032	0.039	0.049	0.051	0.040	0.064	0.042	0.033	0.031	0.028	0.016	0.007
Public Admin	0.079	0.059	0.007	0.002	0.028	0.013	0.053	0.034	0.173	0.124	0.184	0.128
Sample Size (unweighted)	11,086	11,250	1,316	1,242	1,280	1,160	1,220	1,181	1,141	1,165	1,156	1,218
Sample Size (weighted)	5,419,622	5,095,744	598,197	553,326	597,281	511,738	594,931	559,867	594,109	561,982	596,654	560,829
% of weighted sample	51.54	48.46	51.95	48.05	53.86	46.14	51.52	48.48	51.39	48.61	51.55	48.45

Table 5: Comparison of 1996 Estimates with Drolet

Model	Sample	Earnings	Experience	Unadjusted Differential (log)	Explained (log)	Unexplained (log)	Adjusted Earnings		
							(A) (F % of M)	Drolet (B) (%)	Difference (A - B)
Base Model									
1	FTFY	annual	potential	0.342	0.005	0.337	71.4	70.4	1.0
	all	hourly	potential	0.222	0.000	0.222	80.1	79.4	0.7
2	FYFT	annual	actual	0.342	0.051	0.291	74.8	74.1	0.7
	all	hourly	actual	0.222	0.062	0.160	85.2	83.2	2.0
3	FYFT	annual	actual	0.342	--	--	--	75.4	
	all	hourly	actual	0.222	--	--	--	84.9	
Conventional Model									
1	all	hourly	potential	0.222	0.040	0.182	83.4	82.0	1.4
2	all	hourly	potential	0.222	0.073	0.149	86.2	86.2	0.0
3	all	hourly	potential	0.222	--	--	--	87.1	
Augmented Model									
1	all	hourly	actual	0.222	0.063	0.159	85.3	85.6	-0.3
2	all	hourly	actual	0.222	0.094	0.129	87.9	88.6	-0.7
3	all	hourly	actual	0.222	--	--	--	89.4	

Notes: "--" denotes that the data cannot be calculated using the SLID PUMF. The methodology followed here is almost identical to that of Drolet (2002b), with the exception that the detailed variables for major field of study, work responsibilities, age of youngest family member, and urban size are not included. The base models 1 and 2 include experience (whether potential or actual) and level of education; base model 3 adds major field of study. The conventional models all use potential experience and its square, education level, job tenure, marital status, union and part-time status, firm size and region. Conventional model 2 adds occupation (25 groups) and industry (16 groups). Model 3 further included work responsibilities. All augmented models identical to the corresponding conventional model but use actual experience (not potential) and field of study (in place of education level). The adjusted difference in column 8 is obtained by using the formula  $e^{-x} \times 100$  where x is the unexplained log difference in column 7.

Table 6: Comparison of 2005 Estimates with 1996 Estimates

Model	Sample	Earnings	Experience	Unadjusted	Explained	Unexplained	Adjusted Differential		Difference
				Differential			2005 (A)	1996 (B)	
				(log)	(log)	(log)	(F % of M)	(%)	(A - B)
Base Model									
1	FTFY	annual	potential	0.332	0.005	0.327	72.1	71.1	1.0
	all	hourly	potential	0.205	0.001	0.204	81.5	80.1	1.5
2	FYFT	annual	actual	0.332	0.048	0.283	75.4	74.8	0.6
	all	hourly	actual	0.205	0.053	0.151	86.0	85.2	0.8
Conventional Model									
1	all	hourly	potential	0.205	0.026	0.178	83.7	83.4	0.3
2	all	hourly	potential	0.205	0.071	0.134	87.5	86.2	1.3
Augmented Model									
1	all	hourly	actual	0.205	0.050	0.154	85.7	85.3	0.4
2	all	hourly	actual	0.205	0.087	0.118	88.9	87.9	0.9

Notes: See notes to Table 5.

Table 7: Detailed Decomposition Results, OLS and Quantile Regressions, 1996

	Absolute differential					
	OLS	q=.10	q=.25	q=.50	q=.75	q=.90
Explained						
Experience	0.026	0.007	0.017	0.041	0.036	0.035
Education	-0.006	0.002	0.003	-0.014	-0.008	-0.014
Tenure	0.010	0.003	0.001	0.015	0.015	0.015
Part-time	0.007	0.031	0.017	0.008	-0.001	-0.021
Union coverage	0.004	0.010	0.008	0.008	0.004	-0.002
No. employees	0.009	0.012	0.003	0.010	0.009	0.008
Marital	-0.002	-0.010	-0.008	0.000	0.003	0.008
Region/province	-0.001	0.001	-0.004	0.003	-0.005	-0.001
Occupation	-0.003	0.013	0.012	-0.005	-0.013	-0.062
Industry	0.050	0.074	0.043	0.042	0.064	0.056
Total Explained (A)	0.094	0.144	0.091	0.110	0.103	0.022
Total Unexplained (B)	0.129	0.071	0.143	0.118	0.120	0.147
Total Difference (A + B)	0.222	0.215	0.234	0.228	0.223	0.170
Adjusted female wage	87.9	93.1	86.7	88.9	88.7	86.3

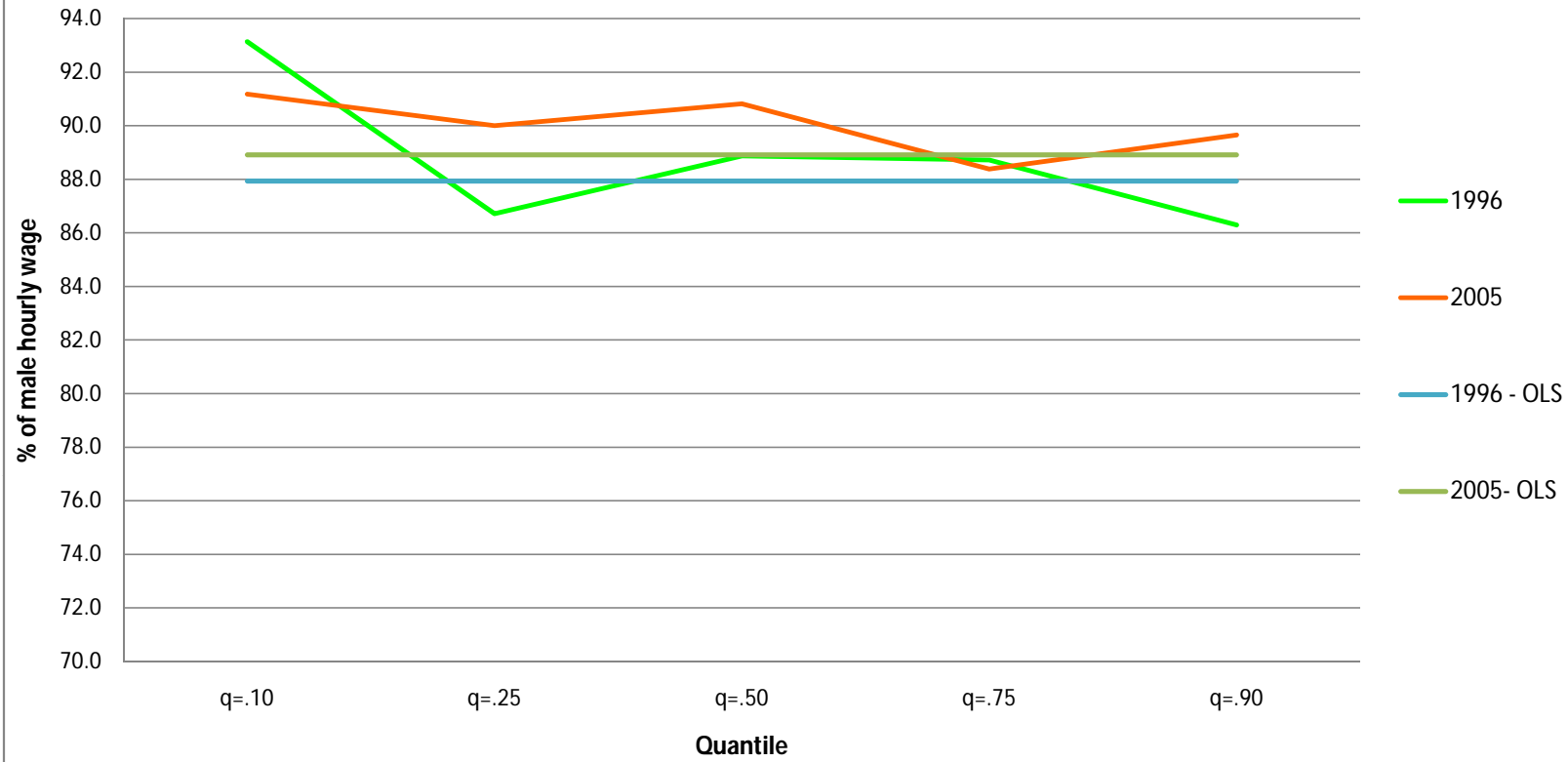
Notes: With the exception of part-time status, the components listed in this table are aggregates of individual variables in Table 1. The experience aggregate includes experience and its square. The regression results used to generate these figures are contained in Appendix Tables 1 and 2.

Table 8: Detailed Decomposition Results, OLS and Quantile Regressions, 2005

	Absolute differential					
	OLS	q=.10	q=.25	q=.50	q=.75	q=.90
<b>Explained</b>						
Experience	0.026	0.012	0.032	0.035	0.022	0.033
Education	-0.009	0.000	-0.011	-0.016	-0.006	-0.005
Tenure	0.005	0.007	0.002	0.009	0.005	0.006
Part-time	0.012	0.023	0.026	0.020	0.008	0.008
Union coverage	0.001	0.004	0.004	0.001	-0.002	-0.001
No. employees	0.007	0.004	0.010	0.006	0.008	-0.009
Marital	-0.004	-0.015	-0.008	-0.001	-0.001	0.006
Region/province	0.001	-0.003	-0.004	0.002	0.006	0.006
Occupation	0.017	0.021	0.013	0.019	0.024	-0.030
Industry	0.032	0.040	0.053	0.022	0.031	0.034
Total Explained (A)	0.087	0.092	0.117	0.096	0.095	0.047
Total Unexplained (B)	0.118	0.092	0.105	0.096	0.123	0.109
Total Difference (A + B)	0.205	0.184	0.222	0.192	0.219	0.156
Adjusted female wage	88.9	91.2	90.0	90.8	88.4	89.6

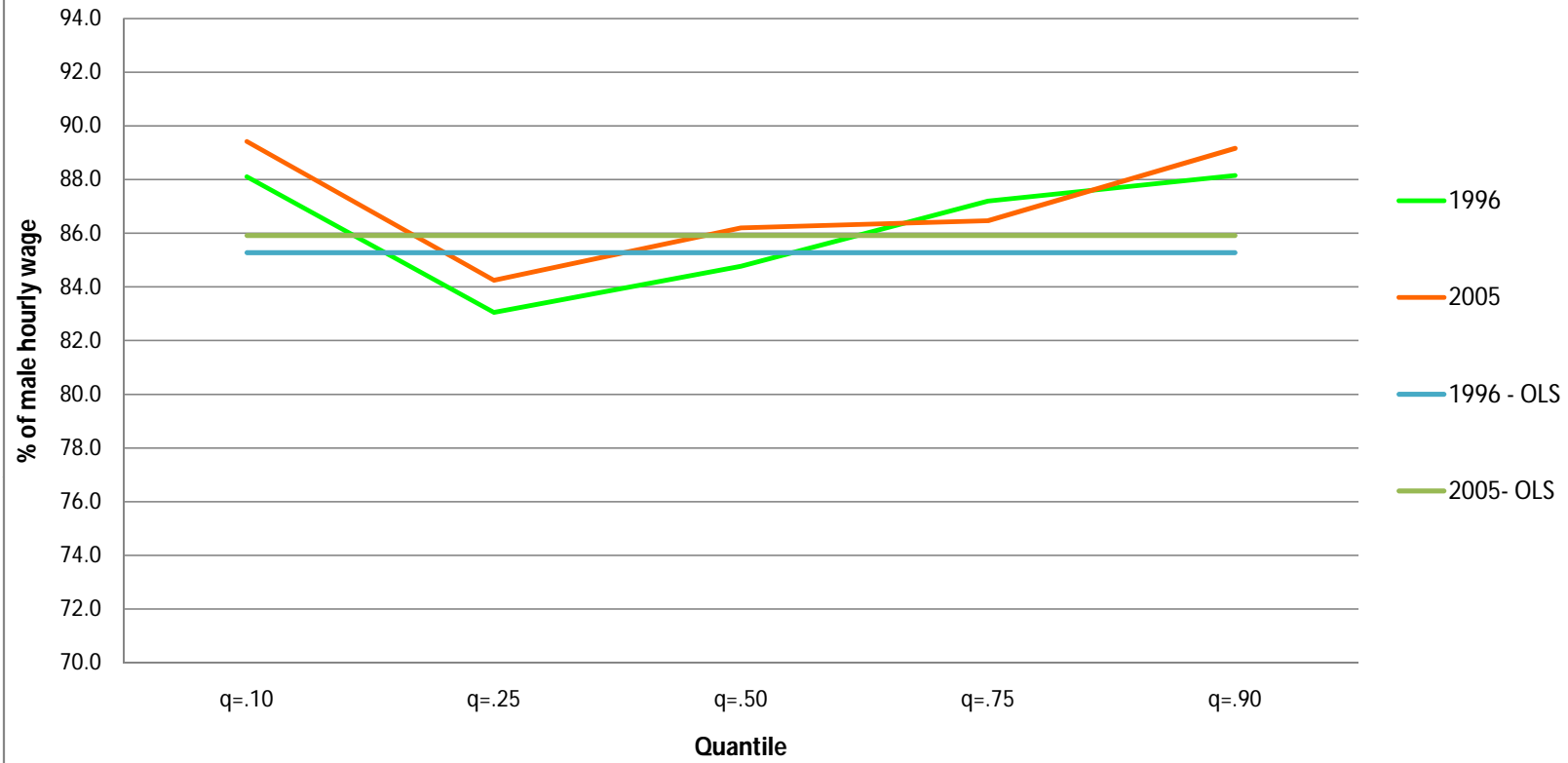
Notes: With the exception of part-time status, the components listed in this table are aggregates of individual variables in Table 1. The experience aggregate includes experience and its square. The regression results used to generate these figures are contained in Appendix Tables 3 and 4.

**Figure 1: Adjusted Female Wage Differentials, 1996 & 2005**  
(OLS and at +/- 5 percentiles from quantile)



Source: Tables 7 and 8

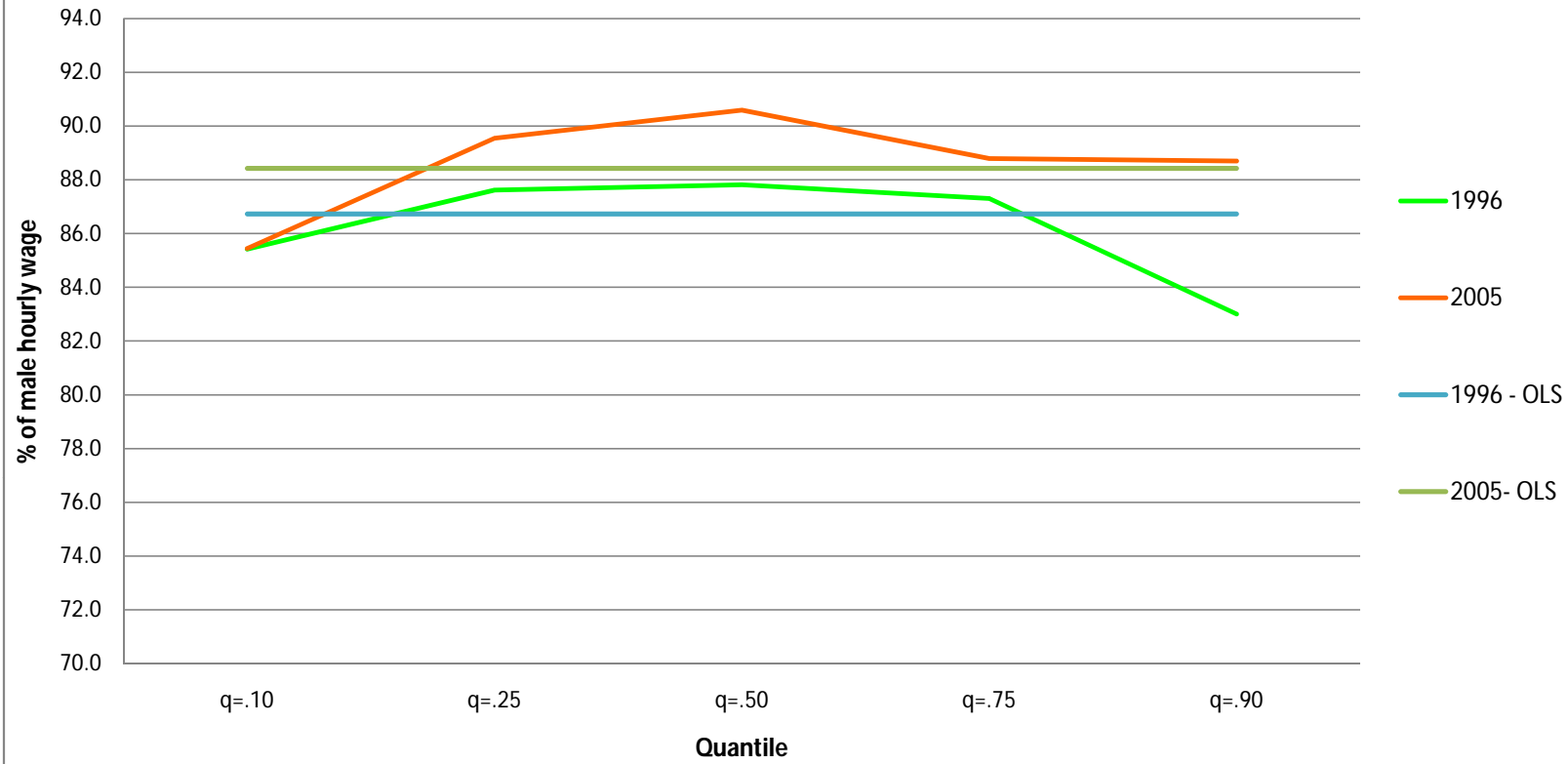
**Figure 2: Adjusted Female Wage Differentials, 1996 & 2005**  
**w/o Industry & Occupation Controls**  
(OLS and at +/- 5 percentiles from quantile)



Source: Appendix Table 5

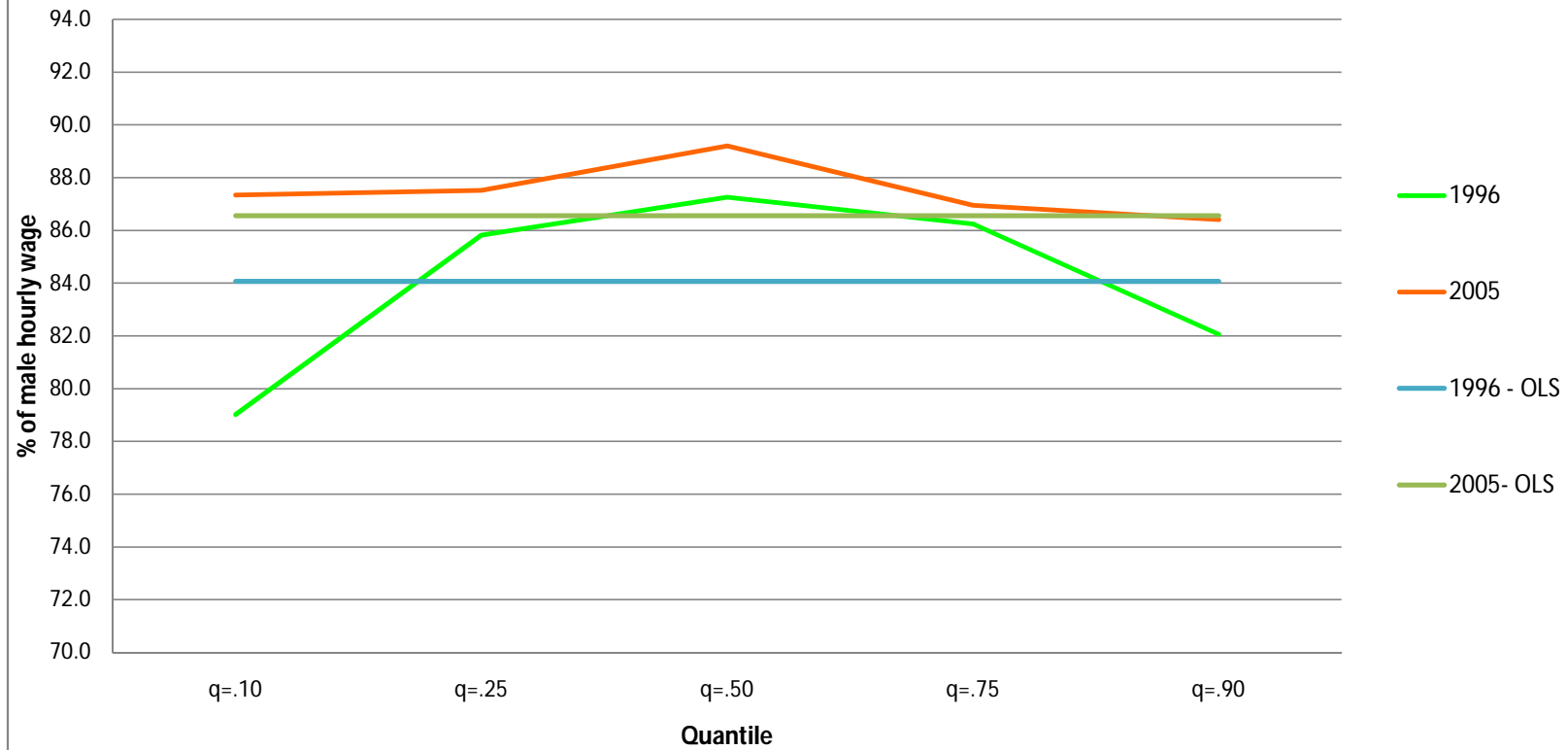


**Figure 3: Adjusted Female Wage Differentials, 1996 & 2005**  
**Full-time, Full-year Only**  
(OLS and at +/- 5 percentiles from quantile)



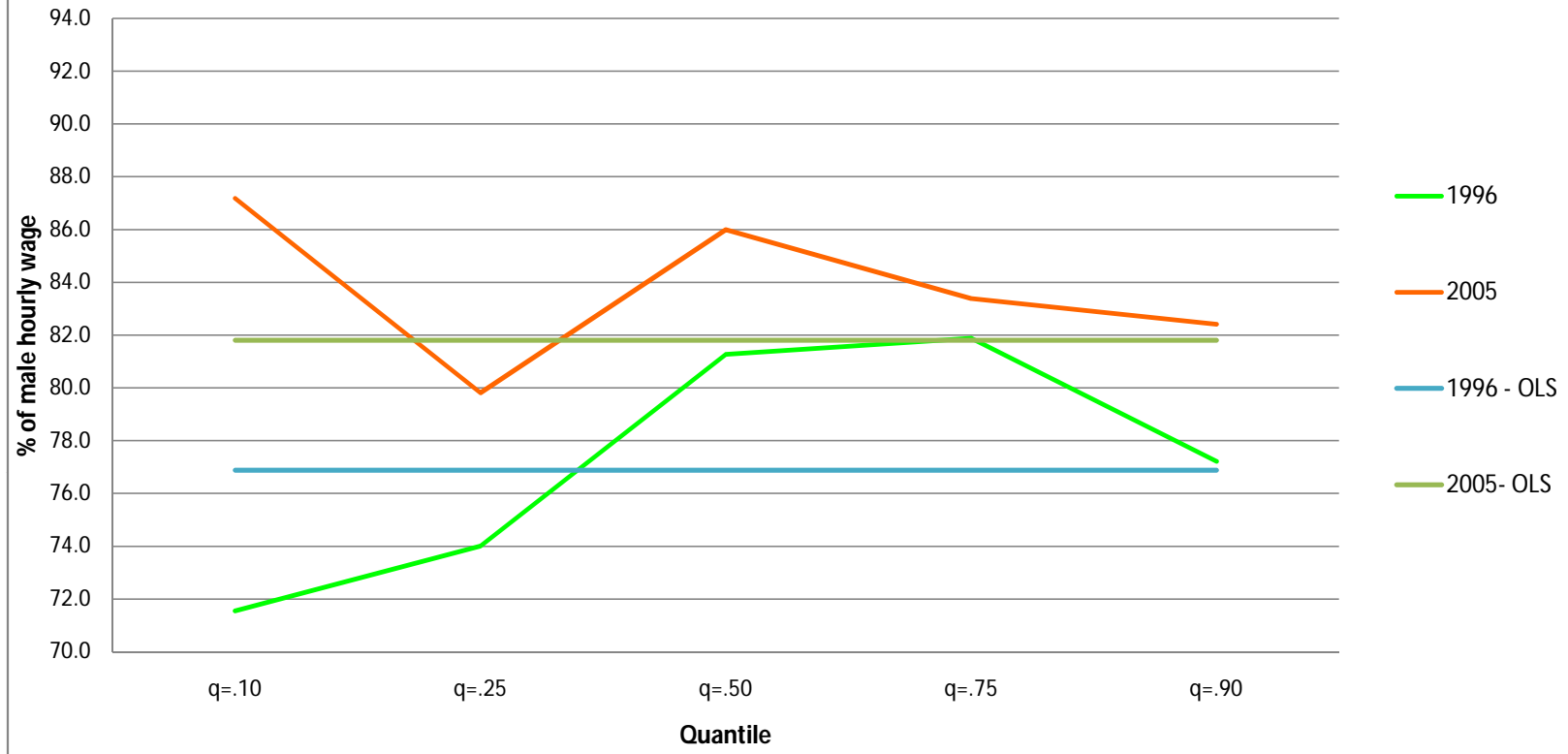
Source: Appendix Table 6

**Figure 4: Adjusted Female Wage Differentials, 1996 & 2005**  
**Annual Wages and Salary**  
(OLS and at +/- 5 percentiles from quantile)



Source: Appendix Table 7

**Figure 5: Adjusted Female Wage Differentials, 1996 & 2005**  
**Annual Wages and Salary (no hours controls)**  
(OLS and at +/- 5 percentiles from quantile)



Source: Appendix Table 8

Appendix Table 1: OLS and Quantile Regressions, Males, 1996

	OLS	q=.10	q=.25	q=.50	q=.75	q=.90
Actual experience squared	0.023***	0.019***	0.020***	0.025***	0.024***	0.022***
Actual experience	0.000***	0.000***	0.000***	0.000***	0.000***	0.000***
Less than high school	-0.036***	-0.052***	-0.027***	-0.028***	-0.049***	-0.039***
Some post-secondary	0.033***	0.022	0.028***	0.019***	0.034***	0.070***
College diploma	0.080***	0.063***	0.092***	0.083***	0.075***	0.084***
Bachelor's degree completed	0.241***	0.153***	0.231***	0.268***	0.276***	0.255***
Graduate school completed	0.267***	0.202***	0.277***	0.285***	0.283***	0.278***
Don't know level of education	-0.226**	-0.134**	-0.223***	-0.474***	0.116***	-0.060
Tenure (in weeks)	0.002***	0.002***	0.002***	0.002***	0.001***	0.001***
Tenure squared	0.000***	0.000***	0.000***	0.000***	0.000***	0.000***
Part-time job	-0.036***	-0.108***	-0.098***	-0.056***	0.006	0.125***
Union/covered by CA	0.088***	0.128***	0.117***	0.098***	0.061***	0.029***
Don't know if covered by CA	0.085**	0.211***	0.077*	0.126***	-0.007	-0.040
20-99 employees	0.089***	0.085***	0.104***	0.089***	0.081***	0.086***
100-499 employees	0.168***	0.173***	0.172***	0.163***	0.155***	0.166***
500-999 employees	0.201***	0.188***	0.202***	0.200***	0.192***	0.227***
1000 or greater employees	0.215***	0.187***	0.231***	0.220***	0.204***	0.222***
Don't know number of employees	0.052**	-0.026	0.019	0.037***	0.145***	0.222***
Divorced/seperated	-0.067***	-0.026	-0.065***	-0.056***	-0.077***	-0.064***
Single	-0.066***	-0.042***	-0.080***	-0.050***	-0.066***	-0.076***
British Columbia	0.083***	0.072***	0.077***	0.101***	0.102***	0.070***
Alberta	-0.032***	-0.050***	-0.057***	-0.032***	-0.024***	-0.034***
Prairies	-0.125***	-0.177***	-0.153***	-0.121***	-0.106***	-0.090***
Quebec	-0.077***	-0.103***	-0.088***	-0.081***	-0.058***	-0.065***
Atlantic provinces	-0.186***	-0.203***	-0.206***	-0.181***	-0.167***	-0.140***
Senior Management	0.187***	0.128**	0.143***	0.049***	0.316***	0.324***
Other Management	0.062***	0.173***	0.113***	0.014	0.048***	0.074***
Prof Occ in Business/Finance	-0.011	0.108**	0.018	-0.101***	-0.021	0.064***
Financial, Secretarial & Admin Occ	-0.060**	0.068	0.032	-0.100***	-0.112***	-0.098***
Clerical Occupations	-0.225***	-0.076**	-0.104***	-0.258***	-0.294***	-0.327***
Natural & Applied Science	0.010	0.117***	0.081***	-0.021*	-0.029**	-0.058***
Prof Occ in Health	0.256***	0.309***	0.316***	0.165***	0.196***	0.273***

... cont.

Appendix Table 1 continued

	OLS	q=-.10	q=.25	q=.50	q=.75	q=.90
Tech & Assisting Health in Health	-0.040	0.074	0.006	-0.030	-0.076***	-0.171***
Social Science, Govt, Religion	-0.023	0.074	0.036	-0.058***	-0.049***	-0.083***
Teachers/Professors	0.030	0.232***	0.104***	-0.036**	-0.020	-0.041
Art, Culture, Rec & Sport	-0.055*	0.037	0.056*	-0.122***	-0.093***	-0.108***
Retail Salespersons	-0.198***	-0.056	-0.110***	-0.256***	-0.220***	-0.266***
Chefs/Cooks & Food & Bev	-0.247***	0.011	-0.079**	-0.297***	-0.326***	-0.364***
Protective Services	-0.077***	0.031	0.021	-0.085***	-0.087***	-0.092***
Childcare/Home Supp	-0.229***	-0.189**	-0.135***	-0.111***	-0.203***	-0.386***
Sales and Service	-0.272***	-0.082***	-0.182***	-0.328***	-0.324***	-0.349***
Contractors/Supervisors in Trades/Trans	-0.008	0.164***	0.052*	-0.051***	-0.031*	-0.068***
Construction Trades	-0.114***	0.054	0.010	-0.158***	-0.179***	-0.241***
Other Trades Occupations	-0.072***	0.077**	0.024	-0.121***	-0.138***	-0.158***
Transport & Equipment Operators	-0.184***	0.003	-0.074***	-0.232***	-0.253***	-0.282***
Trades Helpers ,Construction	-0.210***	-0.072*	-0.129***	-0.258***	-0.275***	-0.275***
Unique to Primary Industry	-0.214***	-0.120***	-0.141***	-0.245***	-0.212***	-0.225***
Machine Ops/Manufacturing	-0.158***	-0.056	-0.080***	-0.203***	-0.178***	-0.232***
Processing,Manufacturing	-0.234***	-0.106**	-0.118***	-0.263***	-0.281***	-0.331***
Agriculture	-0.136***	-0.148***	-0.077***	-0.102***	-0.217***	-0.225***
Forestry, Fishing, Mining, O & G	0.317***	0.281***	0.312***	0.317***	0.328***	0.379***
Utilities	0.289***	0.320***	0.290***	0.261***	0.281***	0.303***
Construction	0.217***	0.214***	0.224***	0.226**	0.240***	0.238***
Manufacturing	0.108***	0.131***	0.124***	0.114***	0.087***	0.107***
Transportation & Warehousing	0.093***	0.081***	0.135***	0.087***	0.083***	0.094***
Finance, Ins, Real Est & Leasing	0.116***	0.105***	0.168***	0.122***	0.115***	0.110***
Prof, Scientific, and Tech Services	0.186***	0.259***	0.239***	0.165***	0.149***	0.145***
Business, Building and Support Services	0.011	-0.015	0.001	0.032***	-0.037***	0.020
Educational Services	0.057***	0.112***	0.103***	0.045***	0.018	-0.009
Health Care & Social Assistance	-0.030	-0.050	-0.011	-0.066***	-0.043***	0.008
Information, Culture & Recreation	0.080***	0.055*	0.053***	0.126***	0.121***	0.059***
Acomodation and Food Services	-0.125***	-0.205***	-0.132***	-0.109***	-0.144***	-0.117***
Other Services	-0.034**	-0.056*	0.012	0.029***	-0.039***	-0.058***
Public Admin	0.136***	0.186***	0.169***	0.153***	0.108***	0.059***
Constant	2.327***	1.850***	2.040***	2.328***	2.584***	2.817***
R <sup>2</sup> /Pseudo R <sup>2</sup>	0.5616	0.3644	0.3923	0.3783	0.3374	0.3095

Note: \*\*\*, \*\*, and \* denote statistical significance at the 1, 5, and 10 per cent levels, respectively.

Appendix Table 2: OLS and Quantile Regressions, Females, 1996

	OLS	q=.10	q=.25	q=.50	q=.75	q=.90
Actual experience squared	0.012***	0.008***	0.011***	0.012***	0.012***	0.014***
Actual experience	0.000***	0.000***	0.000***	0.000***	0.000***	0.000***
Less than high school	-0.059***	-0.077***	-0.058***	-0.046***	-0.041***	-0.035***
Some post-secondary	0.034***	0.019	0.006	0.029**	0.034***	0.031***
College diploma	0.051***	0.024***	0.031***	0.042***	0.059***	0.095***
Bachelor's degree completed	0.241***	0.189***	0.184***	0.204***	0.247***	0.291***
Graduate school completed	0.308***	0.268***	0.257***	0.291***	0.327***	0.394***
Don't know level of education	0.248**	0.348***	0.242***	0.123***	0.146***	0.312***
Tenure (in weeks)	0.002***	0.002***	0.002***	0.002***	0.002***	0.002***
Tenure squared	0.000***	0.000***	0.000***	0.000***	0.000***	0.000***
Part-time job	0.030***	-0.017**	-0.007	0.001***	0.028***	0.111***
Union/covered by CA	0.106***	0.150***	0.154***	0.120***	0.077***	0.026***
Don't know if covered by CA	-0.016	-0.010	0.009	0.013	0.003	-0.060
20-99 employees	0.082***	0.103***	0.076***	0.065***	0.072***	0.064***
100-499 employees	0.134***	0.154***	0.131***	0.133***	0.130***	0.091***
500-999 employees	0.138***	0.130***	0.136***	0.124***	0.146***	0.152***
1000 or greater employees	0.222***	0.236***	0.195***	0.188***	0.220***	0.190***
Don't know number of employees	0.081***	0.011	0.070***	0.065**	0.121***	0.111***
Divorced/seperated	0.000	0.022**	0.004	0.007	-0.013**	-0.005
Single	-0.020***	-0.014*	0.000	-0.012	-0.027***	-0.039***
British Columbia	0.058***	0.070***	0.066***	0.059***	0.058***	0.028***
Alberta	-0.101***	-0.092***	-0.122***	-0.099***	-0.090***	-0.126***
Prairies	-0.158***	-0.191***	-0.169***	-0.164***	-0.138***	-0.148***
Quebec	-0.111***	-0.093***	-0.102***	-0.111***	-0.114***	-0.156***
Atlantic provinces	-0.202***	-0.198***	-0.208***	-0.210***	-0.200***	-0.242***
Senior Management	0.105*	-0.197***	0.079**	0.246***	0.260***	0.301***
Other Management	-0.036	-0.025	0.010*	-0.017	-0.032**	-0.051**
Prof Occ in Business/Finance	0.019	0.040	0.033	0.030	0.005	-0.081***
Financial, Secretarial & Admin Occ	-0.105***	-0.067***	-0.036***	-0.102***	-0.128***	-0.198***
Clerical Occupations	-0.217***	-0.112***	-0.119***	-0.230***	-0.273***	-0.289***
Natural & Applied Science	0.057**	-0.014	0.035	0.090***	0.115***	0.035
Prof Occ in Health	0.078***	0.143***	0.230***	0.116***	0.069***	-0.017***

... cont.

Appendix Table 2 continued

	OLS	q=.10	q=.25	q=.50	q=.75	q=.90
Tech & Assisting Health in Health	-0.146***	-0.148***	-0.077***	-0.169***	-0.122***	-0.145***
Social Science, Govt, Religion	-0.042	-0.020	0.039**	-0.025	-0.023	-0.060**
Teachers/Professors	-0.062**	-0.121***	0.031	-0.011	-0.016	-0.002
Art, Culture, Rec & Sport	-0.100***	-0.097***	-0.089***	-0.115***	-0.092***	-0.077***
Retail Salespersons	-0.399***	-0.217***	-0.267***	-0.405***	-0.482***	-0.540***
Chefs/Cooks & Food & Bev	-0.333***	-0.237***	-0.253***	-0.358***	-0.376***	-0.329***
Protective Services	-0.101**	-0.140***	-0.036***	-0.103**	-0.054***	-0.202***
Childcare/Home Supp	-0.355***	-0.400***	-0.285***	-0.287***	-0.279***	-0.310***
Sales and Service	-0.341***	-0.220***	-0.233***	-0.351***	-0.368***	-0.411***
Contractors/Supervisors in Trades/Trans	-0.058	-0.238***	-0.345***	0.077	0.201***	-0.082**
Construction Trades	-0.446***	-0.044	-0.159***	-0.472***	-0.608***	-0.868***
Other Trades Occupations	-0.333***	-0.489***	-0.185***	-0.334***	-0.210***	-0.336***
Transport & Equipment Operators	-0.379***	-0.450***	-0.253***	-0.379***	-0.337***	-0.391***
Trades Helpers ,Construction	-0.175***	-0.268***	-0.144***	-0.168**	-0.131***	-0.061**
Unique to Primary Industry	-0.220***	-0.271***	-0.163***	-0.235***	-0.274***	-0.270***
Machine Ops/Manufacturing	-0.403***	-0.323***	-0.376***	-0.470***	-0.404***	-0.370***
Processing,Manufacturing	-0.487***	-0.395***	-0.405***	-0.546***	-0.519***	-0.463***
Agriculture	-0.208***	-0.105***	-0.172***	-0.207***	-0.166***	-0.237***
Forestry, Fishing, Mining, O & G	0.290***	0.300***	0.224***	0.328***	0.269***	0.248***
Utilities	0.239***	0.269***	0.316***	0.292***	0.191***	0.208***
Construction	0.160***	0.150***	0.215***	0.151***	0.088***	0.052**
Manufacturing	0.110***	0.111***	0.128***	0.150***	0.098***	0.049***
Transportation & Warehousing	0.094***	0.087***	0.061***	0.108***	0.121***	0.119***
Finance, Ins, Real Est & Leasing	0.091***	0.163***	0.148***	0.114***	0.074***	0.011
Prof, Scientific, and Tech Services	0.115***	0.165***	0.126***	0.133***	0.089***	0.081***
Business, Building and Support Services	0.050**	0.008	0.029*	0.037	0.104***	0.085***
Educational Services	0.118***	0.190***	0.158***	0.150***	0.086***	0.015
Health Care & Social Assistance	0.097***	0.129***	0.116***	0.121***	0.079***	0.013
Information, Culture & Recreation	0.082***	0.127***	0.120***	0.113***	0.070***	0.060***
Acommodation and Food Services	-0.153***	-0.080***	-0.087***	-0.127***	-0.183***	-0.247***
Other Services	-0.028	-0.036**	-0.013	-0.002	-0.024**	-0.052***
Public Admin	0.087***	0.144***	0.124***	0.139***	0.084***	0.069***
Constant	2.334***	1.937***	2.074***	2.329***	2.524***	2.800***
R <sup>2</sup> /Pseudo R <sup>2</sup>	0.5945	0.3488	0.4238	0.4319	0.3914	0.3390

Note: \*\*\*, \*\*, and \* denote statistical significance at the 1, 5, and 10 per cent levels, respectively.

Appendix Table 3: OLS and Quantile Regressions, Males, 2005

	OLS	q=.10	q=.25	q=.50	q=.75	q=.90
Actual experience squared	0.022***	0.016***	0.022***	0.024***	0.025***	0.018***
Actual experience	0.000***	0.000***	0.000***	0.000***	0.000***	0.000***
Less than high school	-0.062***	-0.082***	-0.053***	-0.043***	-0.078***	-0.070***
Some post-secondary	0.023	-0.008	0.025	0.026*	0.026***	0.033**
College diploma	0.068***	0.064***	0.086***	0.089***	0.060***	0.059***
Bachelor's degree completed	0.176***	0.163***	0.217***	0.203***	0.173***	0.166***
Graduate school completed	0.299***	0.248***	0.302***	0.288***	0.292***	0.375***
Don't know level of education	0.009	-0.156**	-0.070	0.145**	0.089***	0.024
Tenure (in weeks)	0.001***	0.001***	0.001***	0.001***	0.001***	0.001***
Tenure squared	0.000***	0.000***	0.000***	0.000***	0.000***	0.000***
Part-time job	-0.080***	-0.114***	-0.129***	-0.106***	-0.069***	-0.074***
Union/covered by CA	0.060***	0.082***	0.089***	0.066***	0.042***	0.013***
Don't know if covered by CA	0.037	0.056	-0.027	0.040	0.052**	0.100**
20-99 employees	0.081***	0.097***	0.087***	0.087***	0.075***	0.051***
100-499 employees	0.129***	0.154***	0.134***	0.122***	0.106***	0.117***
500-999 employees	0.208***	0.216***	0.200***	0.208***	0.241***	0.219***
1000 or greater employees	0.220***	0.274***	0.233***	0.211***	0.210***	0.181***
Don't know number of employees	0.119***	0.105***	0.134***	0.129***	0.168***	0.161***
Divorced/seperated	-0.027	-0.018	-0.027	-0.020	0.000***	-0.005
Single	-0.087***	-0.075***	-0.077***	-0.072***	-0.088***	-0.087***
British Columbia	-0.004	-0.001	0.008	-0.007	0.007	-0.002
Alberta	-0.006	-0.011	-0.024*	-0.022*	-0.006	0.004
Prairies	-0.115***	-0.112***	-0.109***	-0.118***	-0.116***	-0.113***
Quebec	-0.103***	-0.085***	-0.094***	-0.113***	-0.114***	-0.109***
Atlantic provinces	-0.189***	-0.195***	-0.197***	-0.200***	-0.182***	-0.168***
Senior Management	0.339***	0.335***	0.311***	0.364***	0.458***	0.336***
Other Management	0.077***	0.018	0.043	0.096***	0.099***	0.011
Prof Occ in Business/Finance	-0.022***	-0.064	-0.050	-0.068*	-0.050**	-0.015
Financial, Secretarial & Admin Occ	-0.167***	-0.116***	-0.114***	-0.195***	-0.184***	-0.377***
Clerical Occupations	-0.376***	-0.289***	-0.314***	-0.378***	-0.409***	-0.573***
Natural & Applied Science	-0.056***	-0.054***	-0.038***	-0.076***	-0.050***	-0.178***
Prof Occ in Health	0.008	-0.198***	0.094	-0.006	0.065	-0.032

... cont.



Appendix Table 3 continued

	OLS	q=.10	q=.25	q=.50	q=.75	q=.90
Tech & Assisting Health in Health	-0.297***	-0.296***	-0.282***	-0.368***	-0.264***	-0.327***
Social Science, Govt, Religion	-0.120***	-0.133***	-0.068***	-0.101***	-0.074***	-0.188***
Teachers/Professors	-0.087***	-0.064*	-0.061***	-0.078**	-0.081***	-0.187***
Art, Culture, Rec & Sport	-0.118***	-0.082**	-0.066	-0.157***	-0.163***	-0.252***
Retail Salespersons	-0.338***	-0.266***	-0.307***	-0.372***	-0.347***	-0.396***
Chefs/Cooks & Food & Bev	-0.284***	-0.269***	-0.234***	-0.325***	-0.338***	-0.389***
Protective Services	-0.321***	-0.326***	-0.303***	-0.303***	-0.237***	-0.355***
Childcare/Home Supp	-0.409***	-0.198*	-0.361***	-0.316***	-0.498***	-0.646***
Sales and Service	-0.418***	-0.309***	-0.349***	-0.446***	-0.480***	-0.614***
Contractors/Supervisors in Trades/Trans	-0.083***	-0.044	-0.069*	-0.064*	-0.134***	-0.299***
Construction Trades	-0.239***	-0.164***	-0.227***	-0.246***	-0.275***	-0.427***
Other Trades Occupations	-0.211***	-0.148***	-0.184***	-0.212***	-0.243***	-0.391***
Transport & Equipment Operators	-0.354***	-0.269***	-0.285***	-0.338***	-0.416***	-0.565***
Trades Helpers ,Construction	-0.361***	-0.286***	-0.308***	-0.351***	-0.422***	-0.571***
Unique to Primary Industry	-0.308***	-0.281***	-0.282***	-0.309***	-0.269***	-0.426***
Machine Ops/Manufacturing	-0.316***	-0.306***	-0.296***	-0.333***	-0.312***	-0.406***
Processing,Manufacturing	-0.440***	-0.429***	-0.399***	-0.430***	-0.471***	-0.597***
Agriculture	-0.058	0.010	-0.065	-0.062*	-0.121***	-0.161***
Forestry, Fishing, Mining, O & G	0.281***	0.290***	0.305***	0.279***	0.232***	0.222***
Utilities	0.357***	0.448***	0.427***	0.346***	0.249***	0.229***
Construction	0.176***	0.220***	0.245***	0.191***	0.184***	0.173***
Manufacturing	0.114***	0.210***	0.152***	0.124***	0.071***	0.041***
Transportion & Warehousing	0.120***	0.139***	0.144***	0.117***	0.095***	0.127***
Finance, Ins, Real Est & Leasing	0.183***	0.174***	0.178***	0.217***	0.168***	0.196***
Prof, Scientific, and Tech Services	0.185***	0.205***	0.214***	0.184***	0.162***	0.115***
Business, Building and Support Services	-0.075***	-0.056*	-0.096***	-0.090***	-0.081***	-0.059***
Educational Services	0.084***	0.187***	0.110***	0.077***	0.050**	-0.007
Health Care & Social Assistance	0.064***	0.122***	0.031	0.063**	0.018	0.009
Information, Culture & Recreation	0.094***	0.065**	0.082***	0.150***	0.109***	0.051**
Accomodation and Food Services	-0.161***	-0.094**	-0.128***	-0.129***	-0.160***	-0.175***
Other Services	0.025	-0.001	0.036	0.023	0.031*	0.053**
Public Admin	0.226***	0.314***	0.248***	0.217***	0.165***	0.140***
Constant	2.721***	2.283***	2.441***	2.674***	2.950***	3.342***
R <sup>2</sup> /Pseudo R <sup>2</sup>	0.5641	0.356	0.3836	0.3762	0.3581	0.3407

Note: \*\*\*, \*\*, and \* denote statistical significance at the 1, 5, and 10 per cent levels, respectively.

Appendix Table 4: OLS and Quantile Regressions, Females, 2005

	OLS	q=.10	q=.25	q=.50	q=.75	q=.90
Actual experience squared	0.016***	0.012***	0.015***	0.016***	0.017***	0.016***
Actual experience	0.000***	0.000***	0.000***	0.000***	0.000***	0.000***
Less than high school	-0.060***	-0.068***	-0.062***	-0.063***	-0.046***	-0.051***
Some post-secondary	0.060***	0.020**	0.050***	0.055***	0.081***	0.104***
College diploma	0.074***	0.049***	0.059***	0.078***	0.082***	0.093***
Bachelor's degree completed	0.247***	0.157***	0.206***	0.250***	0.266***	0.284***
Graduate school completed	0.340***	0.121***	0.277***	0.324***	0.373***	0.406***
Don't know level of education	0.024	-0.082***	0.022	0.072***	0.083	0.114*
Tenure (in weeks)	0.002***	0.002***	0.002***	0.002***	0.002***	0.002***
Tenure squared	0.000***	0.000***	0.000***	0.000***	0.000***	0.000***
Part-time job	-0.017**	-0.022***	-0.044***	-0.036***	-0.018*	0.041***
Union/covered by CA	0.080***	0.108***	0.096***	0.092***	0.057***	0.074***
Don't know if covered by CA	0.028	-0.012	-0.022	-0.008***	-0.003	0.069*
20-99 employees	0.060***	0.080***	0.068***	0.058***	0.033***	0.031***
100-499 employees	0.114***	0.112***	0.113***	0.103***	0.112***	0.095***
500-999 employees	0.169***	0.188***	0.176***	0.158***	0.177***	0.161***
1000 or greater employees	0.210***	0.253***	0.231***	0.208***	0.188***	0.150***
Don't know number of employees	0.122***	0.133***	0.097***	0.100***	0.090***	0.164***
Divorced/seperated	-0.002	0.007	-0.001	-0.005***	-0.009	0.014
Single	-0.034***	-0.026***	-0.012*	-0.022**	-0.037***	-0.040***
British Columbia	0.002	0.038***	0.015	0.023**	-0.003	-0.011
Alberta	-0.022**	-0.018***	-0.019**	-0.010***	-0.014***	-0.039***
Prairies	-0.100***	-0.082***	-0.091***	-0.099***	-0.103***	-0.086***
Quebec	-0.077***	-0.047***	-0.063***	-0.062***	-0.091***	-0.098***
Atlantic provinces	-0.189***	-0.160***	-0.177***	-0.172***	-0.197***	-0.197***
Senior Management	0.414***	0.413***	0.280***	0.256***	0.656***	0.538***
Other Management	0.157***	0.130***	0.114***	0.176***	0.182***	0.150***
Prof Occ in Business/Finance	0.051**	0.158***	0.051**	0.055*	0.035	-0.125***
Financial, Secretarial & Admin Occ	-0.146***	-0.040**	-0.124***	-0.135***	-0.171***	-0.306***
Clerical Occupations	-0.209***	-0.040**	-0.166***	-0.201***	-0.243***	-0.393***
Natural & Applied Science	0.074***	0.238***	0.098***	0.070**	0.020***	-0.071**
Prof Occ in Health	0.234***	0.342***	0.265***	0.257***	0.205***	0.097***

... cont.

Appendix Table 4 continued

	OLS	q=.10	q=.25	q=.50	q=.75	q=.90
Tech & Assisting Health in Health	-0.088***	-0.002	-0.114***	-0.088***	-0.094***	-0.110***
Social Science, Govt, Religion	-0.022	0.073***	-0.034	-0.035***	-0.032	-0.112***
Teachers/Professors	0.063**	0.128***	0.054**	0.064**	0.063*	-0.059*
Art, Culture, Rec & Sport	-0.074***	0.044**	-0.082***	-0.098***	-0.079*	-0.094**
Retail Salespersons	-0.378***	-0.182***	-0.309***	-0.361***	-0.474***	-0.596***
Chefs/Cooks & Food & Bev	-0.337***	-0.209***	-0.295***	-0.341***	-0.405***	-0.471***
Protective Services	-0.152***	-0.210***	-0.173***	-0.133***	-0.106***	-0.251***
Childcare/Home Supp	-0.253***	-0.139***	-0.237***	-0.257***	-0.272***	-0.380***
Sales and Service	-0.336***	-0.203***	-0.300***	-0.324***	-0.386***	-0.495***
Contractors/Supervisors in Trades/Trans	-0.213***	-0.178***	-0.125**	-0.239***	-0.234**	-0.556***
Construction Trades	-0.053	-0.036	-0.220***	0.110***	0.098	-0.120**
Other Trades Occupations	-0.252***	0.033	-0.184***	-0.269***	-0.358***	-0.312***
Transport & Equipment Operators	-0.323***	-0.075***	-0.295***	-0.333***	-0.345***	-0.539***
Trades Helpers ,Construction	-0.325***	-0.111***	-0.261***	-0.341***	-0.374***	-0.476***
Unique to Primary Industry	-0.291***	0.021	-0.131***	-0.317***	-0.375***	-0.544***
Machine Ops/Manufacturing	-0.286***	-0.152***	-0.343***	-0.320***	-0.352***	-0.375***
Processing,Manufacturing	-0.444***	-0.285***	-0.483***	-0.444***	-0.521***	-0.554***
Agriculture	-0.071	-0.132***	-0.169***	-0.006***	-0.031	-0.074*
Forestry, Fishing, Mining, O & G	0.228***	0.026*	0.137***	0.313***	0.253***	0.223***
Utilities	0.286***	0.323***	0.357***	0.343***	0.280***	0.177***
Construction	0.164***	0.198***	0.223***	0.141***	0.122***	0.194***
Manufacturing	0.114***	0.054***	0.132***	0.169***	0.128***	0.084***
Transportion & Warehousing	0.208***	0.155***	0.242***	0.247***	0.211***	0.174***
Finance, Ins, Real Est & Leasing	0.175***	0.179***	0.196***	0.199***	0.177***	0.121***
Prof, Scientific, and Tech Services	0.172***	0.168***	0.211***	0.229***	0.188***	0.080***
Business, Building and Support Services	0.055***	0.084***	0.078***	0.081***	0.025***	0.007
Educational Services	0.093***	0.137***	0.145***	0.153***	0.102***	0.014
Health Care & Social Assistance	0.067***	0.081***	0.112***	0.089***	0.072***	-0.021
Information, Culture & Recreation	0.110***	0.087***	0.091***	0.131***	0.157***	0.118***
Accomodation and Food Services	-0.072***	-0.003	-0.045***	-0.060***	-0.086***	-0.195***
Other Services	0.074***	-0.001	0.075***	0.105***	0.115***	0.061***
Public Admin	0.232***	0.264***	0.287***	0.286***	0.222***	0.117***
Constant	2.452***	2.009***	2.224***	2.407***	2.662***	2.981***
R <sup>2</sup> /Pseudo R <sup>2</sup>	0.6132	0.3617	0.4167	0.4307	0.4127	0.3752

Note: \*\*\*, \*\*, and \* denote statistical significance at the 1, 5, and 10 per cent levels, respectively.

Appendix Table 5: Decomposition Results, OLS and Quantile Regressions at +/- Five Percentiles, 1996 & 2005, w/o Occupation and Industry Controls

	1996					
	OLS	q=.10	q=.25	q=.50	q=.75	q=.90
Male with Male	2.781	2.037	2.377	2.804	3.163	3.467
Male with Female	2.717	1.976	2.329	2.716	3.086	3.408
Female with Female	2.558	1.850	2.144	2.551	2.949	3.282
Total Differential	0.222	0.187	0.233	0.253	0.214	0.185
Explained	0.063	0.060	0.047	0.088	0.077	0.059
Unexplained	0.159	0.127	0.186	0.165	0.137	0.126
Adjusted female wage	85.3	88.1	83.1	84.8	87.2	88.2

	2005					
	OLS	q=.10	q=.25	q=.50	q=.75	q=.90
Male with Male	2.978	2.240	2.584	2.988	3.351	3.686
Male with Female	2.925	2.180	2.530	2.920	3.296	3.629
Female with Female	2.773	2.068	2.359	2.772	3.150	3.514
Total Differential	0.205	0.172	0.225	0.216	0.201	0.172
Explained	0.053	0.060	0.054	0.067	0.055	0.057
Unexplained	0.152	0.112	0.171	0.148	0.145	0.115
Adjusted female wage	85.9	89.4	84.3	86.2	86.5	89.2

Appendix Table 6: Decomposition Results, OLS and Quantile Regressions at +/- Five Percentiles, 1996 & 2005, Full-year, Full-time Workers Only

	1996					
	OLS	q=.10	q=.25	q=.50	q=.75	q=.90
Male with Male	2.870	2.157	2.527	2.891	3.223	3.500
Male with Female	2.809	2.084	2.424	2.813	3.167	3.515
Female with Female	2.666	1.927	2.292	2.683	3.031	3.328
Total Differential	0.204	0.231	0.235	0.208	0.192	0.172
Explained	0.061	0.073	0.103	0.078	0.056	-0.014
Unexplained	0.142	0.158	0.132	0.130	0.136	0.186
Adjusted female wage	86.7	85.4	87.6	87.8	87.3	83.0

	2005					
	OLS	q=.10	q=.25	q=.50	q=.75	q=.90
Male with Male	3.052	2.327	2.683	3.028	3.423	3.762
Male with Female	2.988	2.281	2.577	2.973	3.350	3.715
Female with Female	2.865	2.123	2.466	2.875	3.231	3.595
Total Differential	0.187	0.203	0.216	0.154	0.192	0.167
Explained	0.064	0.046	0.106	0.055	0.073	0.047
Unexplained	0.123	0.157	0.110	0.099	0.119	0.120
Adjusted female wage	88.4	85.5	89.6	90.6	88.8	88.7

Appendix Table 7: Decomposition Results, OLS and Quantile Regressions at +/- Five Percentiles, 1996 & 2005,  
Annual Salary

	1996					
	OLS	q=.10	q=.25	q=.50	q=.75	q=.90
Male with Male	10.250	8.678	9.762	10.431	10.915	11.252
Male with Female	9.920	8.291	9.290	10.094	10.634	11.057
Female with Female	9.747	8.056	9.137	9.957	10.486	10.859
Total Differential	0.503	0.622	0.625	0.474	0.428	0.393
Explained	0.329	0.387	0.472	0.338	0.280	0.195
Unexplained	0.174	0.236	0.153	0.136	0.148	0.198
Adjusted female wage	84.1	79.0	85.8	87.2	86.2	82.1

	2005					
	OLS	q=.10	q=.25	q=.50	q=.75	q=.90
Male with Male	10.510	9.039	10.022	10.655	11.174	11.544
Male with Female	10.202	8.479	9.512	10.355	10.934	11.322
Female with Female	10.057	8.343	9.378	10.241	10.794	11.176
Total Differential	0.452	0.695	0.644	0.414	0.380	0.368
Explained	0.308	0.560	0.510	0.299	0.240	0.222
Unexplained	0.144	0.135	0.133	0.114	0.140	0.146
Adjusted female wage	86.5	87.3	87.5	89.2	86.9	86.4

Appendix Table 8: Decomposition Results, OLS and Quantile Regressions at +/- Five Percentiles, 1996 & 2005,  
Annual Salary (no hours controls)

	1996					
	OLS	q=.10	q=.25	q=.50	q=.75	q=.90
Male with Male	10.251	8.677	9.724	10.407	10.859	11.233
Male with Female	10.015	8.402	9.368	10.138	10.669	11.112
Female with Female	9.752	8.068	9.067	9.930	10.469	10.854
Total Differential	0.499	0.610	0.658	0.477	0.390	0.379
Explained	0.236	0.275	0.357	0.269	0.190	0.121
Unexplained	0.263	0.335	0.301	0.207	0.200	0.259
Adjusted female wage	76.9	71.5	74.0	81.3	81.9	77.2
	2005					
	OLS	q=.10	q=.25	q=.50	q=.75	q=.90
Male with Male	10.511	9.005	9.997	10.641	11.160	11.533
Male with Female	10.259	8.451	9.545	10.368	10.967	11.345
Female with Female	10.058	8.314	9.320	10.217	10.786	11.151
Total Differential	0.453	0.691	0.677	0.424	0.374	0.382
Explained	0.252	0.554	0.451	0.273	0.193	0.188
Unexplained	0.201	0.137	0.225	0.151	0.182	0.193
Adjusted female wage	81.8	87.2	79.8	86.0	83.4	82.4