

Recombinant DNA modification of gibberellin metabolism alters growth rate and biomass allocation in *Populus*

Haiwei Lu¹ · Venkatesh Viswanath^{1,4} · Cathleen Ma¹ · Elizabeth Etherington^{1,5} · Palitha Dharmawardhana^{1,6} · Olga Shevchenko^{1,7} · Steven H. Strauss¹ · David W. Pearce² · Stewart B. Rood² · Victor Busov³

Received: 4 September 2015 / Revised: 26 October 2015 / Accepted: 28 October 2015 / Published online: 13 November 2015
© The Author(s) 2015. This article is published with open access at Springerlink.com

Abstract Overexpression of genes that modify gibberellin (GA) metabolism and signaling have been previously shown to produce trees with improved biomass production but highly disturbed development. To examine if more subtle types of genetic modification of GA could improve growth rate and modify tree architecture, we transformed a model poplar genotype (*Populus tremula* × *P. alba*) with eight genes, including two cisgenes (intact copies of native genes), four intragenes (modified copies of native genes), and two

transgenes (from sexually incompatible species), and studied their effects under greenhouse and field conditions. In the greenhouse, four out of the eight tested genes produced a significant and often striking improvement of stem volume, and two constructs significantly modified the proportion of root or shoot biomass. Characterization of GA concentrations in the cisgenic population that had an additional copy of a poplar *GA20-oxidase* gene showed elevated concentrations of 13-hydroxylated GAs compared to wild-type poplars. In the field, we observed growth improvement for three of the six tested constructs, but it was significantly greater for only one of the constructs, a *pRGL:GA20-oxidase* intragene. The greenhouse and field responses were highly variable, possibly due to cross-talk among the GA pathway and other stress response pathways, or due to interactions between the cisgenes and intragenes with highly similar endogenes. Our results indicate that extensive field trials, similar to those required for conventional breeding, will be critical to evaluating the value and pleiotropic effects of GA-modifying genes.

Communicated by A. M. Dandekar

This article is part of the Topical Collection on *GMOs*

Electronic supplementary material The online version of this article (doi:10.1007/s11295-015-0952-0) contains supplementary material, which is available to authorized users.

✉ Steven H. Strauss
steve.strauss@oregonstate.edu

¹ Department of Forest Ecosystems and Society, Oregon State University, Corvallis, OR 97331, USA

² Department of Biological Sciences, University of Lethbridge, Lethbridge, AB T1K 3M4, Canada

³ School of Forest Resources and Environmental Science, Forestry and Wood Products Building, Michigan Technological University, 1400 Townsend Dr., Houghton, MI 49931, USA

⁴ Present address: MANAS, Plot Number 47 and 48 Krishnaveni Nagar, North Street, Mugalivakkam, Chennai 600125, India

⁵ Present address: College of Agricultural Sciences, Oregon State University, 448 Strand Agriculture Hall, Corvallis, OR 97331, USA

⁶ Present address: Department of Botany and Plant Pathology, Oregon State University, 2082 Cordley Hall, Corvallis, OR 97331, USA

⁷ Present address: Delaware Biotechnology Institute, 15 Innovation Way, Newark, DE 19711, USA

Keywords Cisgenic · Intragenic · Transformation · Plant architecture · Genetic engineering · Forest biotechnology

Introduction

Gibberellins (GAs) are a large class of phytohormones that play fundamental and diverse roles in the regulation of plant growth and development (Olszewski et al. 2002; Achard and Genschik 2009; Hedden and Thomas 2012). Modification of GA levels in plants has been widely used in agriculture, for example to reduce stem elongation and subsequent lodging in cereals as part of the green revolution, to stimulate fruit growth in seedless grapes, to delay fruit senescence in oranges and lemons, or to increase stem elongation in sugarcane

(reviewed in Hedden and Phillips 2000a, 2000b). The molecular biology and biochemistry of GA have been extensively reviewed (e.g., Busov et al. 2008; Yamaguchi 2008; Sponsel and Hedden 2010). Although more than 100 GAs have been identified in higher plants, fungi, and bacteria, only two are commonly biologically active per se within plants, while the others are generally biosynthetic precursors or catabolites. Thus, GA₁ from the predominant early 13-hydroxylation pathway, and GA₄ from the non-13-hydroxylation pathway, are the probable bioeffectors (Fig. 1; Rood and Hedden 1994; Olszewski et al. 2002). Their formation is catalyzed by GA20ox and GA3ox, and they are inactivated by GA2ox, and all of these enzymes are 2-oxoglutarate dependent dioxygenases (2-ODDs) and are subject to feedback regulation (reviewed by Yamaguchi and Kamiya 2000; Gallego-Giraldo et al. 2008; Hedden and Thomas 2012). The *GA20ox* and *GA3ox* genes are regulated by negative feedback as high levels of bioactive GAs lead to reduced expression of these genes. The *GA2ox* genes, on the other hand, are regulated by positive feedback, as high levels of bioactive GAs lead to increased expression of these genes, thereby promoting GA inactivation. The feedback regulations of these 2-ODD encoding genes play a central role for maintaining GA homeostasis.

GA20ox is involved in the catalysis of the penultimate steps in the biosynthesis of active GAs, and transgenic modification of its levels has been extensively studied in plants. *GA20ox* overexpression has been used to successfully modify plant stature in *Arabidopsis thaliana* (*Arabidopsis*) (*AtGA20ox1*; *PdGA20ox1*), *Solanum tuberosum* (*StGA20ox1*), tobacco (*NtGA20ox1*), hybrid aspen (*PtGA20ox1*; *PdGA20ox1*), Carrizo citrange (*CcGA20ox1*) (reviewed by Bhattacharya et al. 2009; Jeon et al. 2015), tomato (*CcGA20ox1*) (García-Hurtado et al. 2012), rice (*OsGA20ox3*; Qin et al. 2013), and *Tricyrtis* sp. ‘Shinonome’ (*TyGA20ox2*; Otani et al. 2014). Regulators of GA action have also been used to modify plant development.

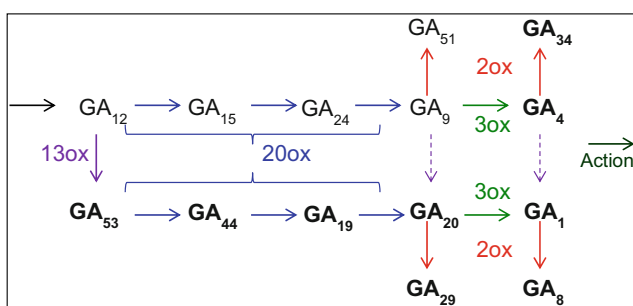


Fig. 1 Schematic diagram of the parallel gibberellin (GA) biosynthetic pathways in higher plants. The non-13-hydroxylation pathway (*top*) and early 13-hydroxylation pathway (*bottom*), leading to the probable bioeffectors, GA₄ and especially GA₁. The relevant enzymes are indicated and the GAs that were analyzed in our study are in bold and include the final non-13-hydroxylated GAs and the more abundant 13-hydroxylated GAs

Negative regulators like repressor of gal-3 (RGA), GA-insensitive (GAI), and repressor of gal-3 like (RGL) proteins from *Arabidopsis* are several well-studied DELLA domain proteins. In response to GA, these DELLA proteins rapidly degrade and repress GA action (Davière and Achard 2013; Claeys et al. 2014). Dominant mutations of DELLA proteins (e.g., *rga*, *gai*, and *rgl1*) have been shown to cause dwarfism in *Arabidopsis*, maize, wheat, barley, and *Populus* (Olszewski et al. 2002; Wen and Chang 2002; Busov et al. 2006). Another negative regulator is SPINDLY (SPY), which is an O-linked N-acetylglucosamine transferase that can interact with DELLA proteins (Claeys et al. 2014) and has been shown to inhibit GA signaling in *Arabidopsis* (Silverstone et al. 2007) and *Petunia* (Izhaki et al. 2001). Modification of *SPY* mRNA levels led to altered plant architecture, including reduced hypocotyl or stem elongation rate (Izhaki et al. 2001; Silverstone et al. 2007). The positive regulator photoperiod responsive 1 (PHOR1) was first identified in potato by Amador et al. (2001). *PHOR1*-overexpressing plants grew faster, while plants with inhibited *PHOR1* expression presented a semi-dwarf phenotype and increased levels of endogenous GAs (reviewed by Olszewski et al. 2002).

Large modifications of tree form and architecture have been proposed as important steps in modifying trees for use in bioenergy plantations (Ragauskas et al. 2006; Mittal and Decker 2013). Key goals include rapid growth rate, reduced stature, and increased allocation to stems in relation to other woody tissues. Because GAs have prominent roles in the control of many aspects of vegetative development in plants, they are logical candidates as tools for achieving these modifications. Eriksson et al. (2000), Han et al. (2010) and Jeon et al. (2015) reported modified properties and improved biomass of poplars by transgenic or cisgenic modification of GA levels. Eriksson et al. (2000) overexpressed a modified *GA20ox* gene (lacking an upstream ATG codon) from *Arabidopsis*. The transgenic plants showed higher levels of C₁₉ GAs (GA₂₀, GA₁, and GA₈ from the 13-hydroxylation pathway, and GA₉, GA₄, and GA₃₄ from the non-13-hydroxylation; Fig. 1), faster growth in height and diameter, and greater shoot vs. root biomass. Similarly, Jeon et al. (2015) overexpressed a *Pinus densiflora GA20ox* (*PdGA20ox1*) in poplars using a constitutive 35S promoter and a xylem-specific promoter respectively. In both cases, they observed an up to three-fold increase in stem biomass, but noticeable reduction in leaf area (20 % to 40 %) and root biomass (up to 80 %) in transgenic plants. In contrast, the poplars produced by Han et al. (2010) were transformed with five different cisgenes, including *GA20ox7*, *GA2ox2*, *GAI1*, *RGL 1-1*, and *RGL 1-2*. The *GA20ox7* gene conferred an early growth advantage to the plants, but the effects diminished over time in the greenhouse trials. Other tested genes, in general, had a retarding effect on plant growth. These studies suggest that recombinant DNA (rDNA) modification of GA levels can improve tree growth and modify biomass allocation, but substantially more refinement of genetic constructs

and phenotypic evaluation are needed before their potential value for application can be assessed.

In this study, we investigated the effects of several kinds of GA-modifying cisgenes, intragenes, and transgenes on the growth rate and architecture of poplars grown in both greenhouse and field environments (Fig. 2). We report GA-modifying rDNA can indeed alter GA concentrations, promote growth rate, and alter tree architecture; however, we also report marked instability of cisgenic, intragenic, and transgenic effects that suggest much additional phenotypic and physiological evaluation will be needed to understand their mechanisms of phenotypic modification and possible value for tree biotechnology.

Materials and methods

Promoters and genes selected

Eight promoter × coding region combinations of GA pathway components (Table 1) were used in our study. Three genes, *GA20ox* (*PtGA20ox7* and *PtGA20ox2-2*), *PHOR1* (*PtPHOR1-2*), and *SPY* (*AtSPY* and *HvSPY*), and seven promoters, either native or constitutive, were employed. For the first six constructs in Table 1, the promoters and the genes were selected based on a whole-genome microarray expression study (Rodgers-Melnick et al. 2012) with the goal of improving stem growth or altering biomass allocation. For the last two constructs in the table, we used *SPY* genes to explore their effect in poplar, which had not been studied previously.

Promoter cloning and testing

To clone four novel promoters, i.e., sequences upstream of *PtRGL1-1*, *PtGA2ox1*, *PtEXPB1* (β -expansin), and *PtCESA1* (cellulose synthase), we isolated genomic DNA from young leaves of *Populus trichocarpa* Nisqually-1 using the DNeasy Plant Mini Kit (Qiagen). We then amplified the upstream parts of these genes (1.5 to 3 kb, including 5'-UTR regions) from 100 ng of template genomic DNA using Platinum Tag DNA Polymerase High Fidelity (Invitrogen). Next, we cloned the PCR products into the pCR4-TOPO TA

cloning vector (Invitrogen, hereafter named TOPO4 vector) and sequence verified five to eight colonies. The DNA sequences of each isolated promoter are given in electronic supplementary appendix S1.

To verify activity and examine expression patterns of these novel promoters in poplars, we inserted each of the promoters in front of an intron-containing *GUS* reporter gene in a GUS PLUS pCambia binary vector. We also inserted the promoter region of *PtGA20ox7* (hereafter named promoter GA20) in the same pCambia vector. We used these five constructs (namely pGA2:GUS, pRGL:GUS, pEXP:GUS, pCES:GUS, and pGA20:GUS) to transform poplars. For GUS assays, we collected nine different tissues (Fig. S1) and incubated them in GUS solution (1 mg/ml X-Gluc, 100 mM sodium phosphate (pH 7.0), 0.5 % (v/v) Triton X-100, and 2 % (v/v) *N,N*-dimethylformamide) for 24 h at 37 °C, and then cleared away chlorophyll by soaking in 70 % ethanol and 10 % bleach for at least 6 h. For visual assessment, we scored GUS intensity for each stained tissue on a 0 to 3 scale (Fig. S2). To roughly quantify promoter specificity, we also calculated several types of specificity indexes, composed of ratios of mean scores between the expected target tissues for the promoters based on microarray or GUS data and other tissues. The lower the average score in non-target tissues, the higher will be the specificity index value; specificity index value greater than 1 indicates preferential expression in target tissue.

We were unable to analyze promoter RGL using GUS analysis because we found that, after transformation, a sequence error had been introduced; the *GUS* gene fused to the promoter was missing a start codon. Therefore, to confirm the activity of promoter RGL in pRGL:GA20-transformed poplars (Table 1), we first performed semi-quantitative reverse transcription-PCR (semi-quantitative RT-PCR) on leaf samples and verified construct-specific primers. We then conducted quantitative reverse transcription-PCR (qRT-PCR) to compare mRNA levels of the *PtGA20ox2-2* gene in leaves and shoot tips. In brief, total RNA was extracted from shoot tips and young leaves of six pRGL:GA20-transformed events and one pBART control vector (described below under construct assembly) transformed event. Two independent sample collections (within 1 week) and extractions were made for each

Fig. 2 Overview of main experiments conducted. rDNA = recombinant DNA-modified

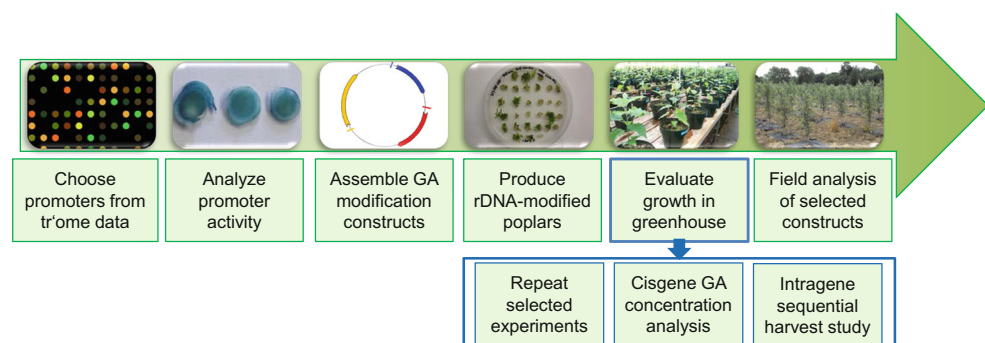


Table 1 Summary of GA modifying constructs studied

Construct notation	Promoter	Driven gene	Terminator	Phytozome (v9.1) gene model/NCBI gene accession for promoter	Phytozome (v9.1) gene model/NCBI gene accession for driven gene	GH/field
pGA20	PtGA20ox7	<i>PtGA20ox7</i>	PtGA20ox7	Potri.014G073700	Potri.014G073700	Both
pPHOR	PtPHOR1-2	<i>PtPHOR1-2</i>	PtPHOR1-2	Potri.007G110600	Potri.007G110600	Both
pRGL:GA20	PtRGL1-1	<i>PtGA20ox2-2</i>	NOS	Potri.004G089800	Potri.005G065400	Both
pGA2:GA20	PtGA2ox1	<i>PtGA20ox2-2</i>	NOS	Potri.001G378400	Potri.005G065400	Both
pEXP:GA20	PtEXPB1	<i>PtGA20ox2-2</i>	NOS	Potri.014G066300	Potri.005G065400	GH
pCES:GA20	PtCESA1	<i>PtGA20ox2-2</i>	NOS	Potri.002G257900	Potri.005G065400	GH
pATS	35S	<i>AtSPY</i>	OCS	X69707	AK221314	Both
pHVS	35S	<i>HvSPY</i>	OCS	X69707	AF035820	Both

GH greenhouse

of the intragenic events and the empty-vector control. DNaseI-treated RNA was used for first-strand cDNA synthesis using SuperScript III Reverse Transcriptase (Invitrogen) and oligo (dT)₁₈ primers according to the manufacturer's protocol. The same primers were used for semi-quantitative RT-PCR and qRT-PCR (Table S1). The forward primer used for amplifying *PtGA20ox2-2* was located in the gene, and the reverse primer was in the junction region between the *PtGA20ox2-2* gene and the NOS terminator in the pRGL:GA20 construct. Therefore, this primer set specifically amplified a 167-bp region (49 bp of the *PtGA20ox2-2* gene and 118 bp in the junction area (hereafter named "GA20 intragene"), without amplifying the endogenous *PtGA20ox2-2* gene in poplar genome. Poplar *ACTIN2* (Phytozome v9.1 accession Potri.001G453600; Table S1) was used as a control reference gene. Semi-quantitative RT-PCR was performed with RNA from leaf samples using 35 cycles of PCR amplification. qRT-PCR was performed with RNA from leaves and shoot tips respectively. For each sample type, we used one 96-well plate and included two biological pseudoreplicates and three technical replicates for each event. qRT-PCR was performed using Platinum SYBR Green qPCR SuperMix-UDG (Invitrogen). PCR conditions were 95 °C for 10 min and then 40 cycles of 95 °C for 15 s and 60 °C for 1 min. qRT-PCR data was analyzed using comparative C_T method.

Construct assembly

For the two cisgene constructs (pGA20 and pPHOR), we cloned a complete PCR product containing the entire upstream and downstream portions of the genes (*PtGA20ox7* or *PtPHOR1-2*) into a TOPO4 vector. The fragment was then cloned into a pBART vector (based on pART27) (Gleave 1992) directly using *NotI* sites. The inserts were fully sequenced prior to cloning, and the plasmids were verified by sequencing of 5' and 3' ends regions after cloning. Details about the pBART vector and the cloning strategy of GA20 have been described earlier (Han et al. 2010).

To clone the coding region (*PtGA20ox2-2*) in the four intragene constructs (pRGL:GA20, pGA2:GA20, pEXP:GA20, and pCES:GA20), we first PCR-amplified the *PtGA20ox2-2* transcript from shoot tips into a TOPO4 vector (forming pGA20TOPO4). We then ligated the 1189-bp *EcoRI* fragment from pGA20TOPO4 containing *GA20ox2-2* into the *EcoRI* site of pCAMBIA 1390, in front of the NOS terminator. The transcript and the terminator were again PCR-amplified and the 1467-bp fragment was ligated into the *PmeI* site of the pBART vector (forming pGA20NOSTBART).

Each novel promoter was then cloned into the pGA20NOSTBART plasmid. Specifically, the RGL promoter and part of the RGL transcript were amplified together from genomic DNA and cloned into the TOPO4 vector (forming pRGLTOPO4); the RGL promoter was amplified from pRGLTOPO4 in the presence of *Pfx* polymerase and cloned into the *PmeI* site of pGA20NOSTBART (forming pRGL:GA20NOSTBART). Likewise, the GA2 promoter was first amplified from genomic DNA and then cloned into TOPO4 (forming pGA2TOPO4), from where the 1128-bp *PmeI* fragment was removed and cloned into pGA20NOSTBART (forming pGA2:GA20NOSTBART). Similarly, the EXP and the CES promoters were amplified from genomic DNA, cloned into TOPO4 vectors, sequence verified, and then cloned in front of the *PtGA20ox2-2* coding sequence in pGA20NOSTBART.

The two SPY transgene constructs (pATS and pHVS) were provided by Dr. Steve Swain (CSIRO Plant Industry, Australia). Cloning strategies were described in Swain et al. (2001) and Filardo et al. (2009). The barley *HvSPY* gene used in this study was originally named *Hvspy-2* (Filardo et al. 2009); its sequence has deletions in exon 8.

Plant material, transformation and regeneration

The female hybrid clone 717-1B4 (*Populus tremula* × *P. alba*: INRA, France), and the *Agrobacterium* hypervirulent strain

AGL1 (Chabaud et al. 2003) were used for plant transformation. In total, we transformed poplar plants with 14 different constructs, including five GUS constructs for promoter testing, eight GA-modifying constructs for greenhouse and field studies, and the pBART vector for control. Transformation and regeneration were essentially as described by Filichkin et al. (2006) except basta was used as the selection agent. Rooted plants were then PCR-verified for the presence of the GA gene of interest (primers in Table S1). Primers were designed to amplify partial border or junction fragments for cisgenic specific or promoter-*PtGA20ox2-2* regions for intragenic specific. Wild-type control plants went through micropropagation under similar conditions to transformed plants. All experimental plants were propagated, acclimated to ambient humidity in gradually opened plastic bags over potted plants in soil, then transferred to 4-l pots containing SunGro Horticulture 'Sunshine' soil with Osmocote 14-14-14 slow-release fertilizer and moved to the greenhouse.

Greenhouse trial design and measurements

We performed a total of six greenhouse trials (from 2007 to 2009) and tested 236 rDNA modified events covering more than 1600 transformed plants (4–20 ramets/transformed event) (Table S2). The first greenhouse trial with the pATS and pHVS constructs included only wild-type control; the other five greenhouse trials included two types of controls, wild-type and empty-vector controls. The June 2008 and July 2008 trials employed a randomized block design (RBD), while the rest of the four trials had a completely randomized design (CRD). Three constructs (pPHOR, pRGL:GA20, and pGA2:GA20) were tested twice in greenhouse. Han et al. (2010) summarized the conditions maintained in the greenhouse. We supplemented natural daylight with artificial light from high pressure sodium lamps and fertilized the plants once every 3 months with Osmocote 20-20-20 slow release fertilizer. We recorded height and diameter (2 in. from the soil surface) every 2 weeks for 6 weeks, or weekly for 4 weeks. Volume index is the product of height and diameter² and used as an index of stem biomass.

In all but one of our greenhouse trials (with the *SPY*-containing constructs pATS and pHVS), we harvested the leaves, stems, and roots separately from randomly selected plants; all plants were harvested from the October 2008 trial with pCES:GA20 and pEXP:GA20. The number of ramets per insertion event harvested varied from 4 to 20 depending on the trial (see Table S2). We oven-dried all harvested shoots (leaves and stems) and roots and measured dry weight. We calculated root fraction (root biomass divided by total biomass) for assessing whether the constructs caused cumulative changes in root vs. shoot allocation of growth.

Sequential harvest study

Han et al. (2010) reported that *PtGA20*-imparted growth modifications differed between early and late stages of tree development. To test whether there was differential biomass allocation during development in GA-modified trees, we sequentially harvested, dried, and measured the roots, leaves, and stems from a subset of plants in the August 2009 greenhouse trial. This study involved six pRGL:GA20-transformed events and six pGA2:GA20-transformed events (5–6 ramets per event), along with both wild-type and empty-vector controls. The organs were harvested every 8–13 days (on May 21, 2010, June 3, 2010, June 14, 2010, and June 22, 2010, respectively) and oven-dried then weighed. Stem, leaf, and root fractions of total biomass were used for statistical analyses as discussed below. Greenhouse conditions were essentially the same as summarized above.

Gibberellin measurements

To assess if there was evidence for changes in GA levels from our constructs, we selected the pGA20 and pPHOR transformants from our July 2009 greenhouse trial for analysis. We randomly collected samples (two young, 4–5-cm leaves per tree) from six ramets per cisgenic event and eight wild-type controls. We then immediately froze them in liquid nitrogen and subsequently freeze dried the samples. We then pooled the samples (creating two pools per type) and then sent them for analysis at the University of Lethbridge, Canada. In short, the leaves were ground with a Retsch MM200 ball mill and then ~0.3 g subsamples were extracted in 80 % MeOH with internal standards of [²H₂]-GA₅₃, GA₄₄, GA₁₉, GA₂₀, GA₂₉, GA₁, GA₈, GA₄ and GA₃₄ (Prof. L. Mander, Australian National University) (Fig. 1). The GAs were purified and measured essentially as described in Busov et al. (2006) except that the methylated samples were trimethylsilylated and analyzed by GC-SIM after NH₂ SPE without intervening HPLC. This permitted simultaneous analysis of the 13-hydroxylated GAs and the final non-13-hydroxylated GAs of poplar (Fig. 1; Pearce et al. 2002).

Field trial design and measurements

We conducted four separate field trials with six different constructs (Table S3): the first with pGA20-transformed plants (planted in summer 2008), the second with pATS- and pHVS-transformed plants (planted in summer 2008), the third with pPHOR-transformed plants (planted in spring 2009), and the fourth with pRGL:GA20- and pGA2:GA20-transformed plants (planted in spring 2009). While the third and the fourth field trials had a CRD, the first two had a RBD (two blocks), with the trees being planted in pairs (row plots). The field trials had 3 to 35 transformed events per construct, with

corresponding wild-type and/or empty-vector controls. We tested a total of 92 insertion events covering 556 trees in the field over two growing seasons. Weeds were lightly managed by mowing between rows every 4 to 6 weeks during the growing season. The sites were irrigated during the growing season using overhead sprinkler systems. We recorded tree diameters at 4 and 12 in. from the ground (for pGA20, pATS, and pHVS tested 2008 trials) or height (for pPHOR, pRGL:GA20, and pGA2:GA20 tested 2009 trials), during the dormant season. Diameter squared (the average of diameter² at 4 in. and diameter² at 12 in. from ground) or volume index (height × diameter²) was used as a surrogate for total stem biomass.

Statistical analyses

General approach In analyzing greenhouse and field trials, we first applied Student's *t* tests to examine whether the two types of controls (i.e., empty-vector control and wild-type control) were significantly different from each other. If not, we pooled them together to enlarge population size and thus increase the precision of estimated means and statistical tests in subsequent analyses. If there was a significant difference between the two control groups, we used the empty-vector control for comparison to the GA constructs. For the September 2007 greenhouse trial (including pATS and pHVS) and the subsequent field trial in 2008, we only included wild-type plants, therefore used them as controls for analyzing volume index and diameter squared. For the July 2008 greenhouse trial (including pRGL:GA20 and pGA2:GA20), we used wild-type controls when analyzing root fraction as we discovered that the empty-vector control plants had been distributed non-randomly in the experiment.

One-way or two-way ANOVA was used to test if volume index, diameter squared, or root fraction was different in the tested constructs vs. controls. In analyzing greenhouse and field data, we considered events as random effects. For the trials with a CRD, we performed a one-way ANOVA using either volume index, diameter squared, or root fraction as the response variable. For the trials with a RBD, we did a two-way ANOVA with blocking as a fixed effect. If both blocking and the interaction term were non-significant, we ignored blocks and analyzed data as a CRD. For each of the chosen models, we examined plotted residuals vs. fitted values to insure compliance with model assumptions (an example figure is shown in Fig. S3). For several trials, the data were log-transformed to meet equal variance assumptions (this was done for the October 2008 greenhouse trial with pEXP:GA20 and pCES:GA20 and field trials with pATS, pHVS, pRGL:GA20, and pGA2:GA20). The type of controls, ANOVA and parameters, and transformations of data used for analyzing greenhouse trials and field trials are summarized in Tables S4 and S5, respectively. We performed Spearman rank

correlation analysis on event means of volume index to examine the similarity of event performance between repeat greenhouse tests, and between greenhouse and field tests. All statistical analyses were carried out using R (version 3.1.2, 2014).

Sequential harvest study In analyzing data from the sequential harvest study, we pooled the two types of controls together as they were not significantly different from each other based on Student's *t* tests. We first did a one-way ANOVA by harvest with shoot fraction as the response variable. Then, using the data from the last three harvests (to avoid potential effects of transplant shock on the first harvest), we modeled the relationship of shoot, root, leaf, or stem biomass to total biomass using weighted regression (Zuur et al. 2009) to deal with observed heteroscedasticity. In this analysis, we included event as a random effect. We excluded five outlier events (one event from the pooled control group, three from population transformed with pGA2:GA20, and one from population transformed with pRGL:GA20) from the regression analysis due to either unusually low total biomass or high root biomass (Fig. S4).

GA levels We analyzed changes of GA₁, GA₈, and GA₂₀ concentrations in pGA20- and pPHOR-transformed plants vs. wild-type control using MANOVA and individual ANOVAs. Data were log transformed to meet the equal variance assumption. For this analysis, we were interested in the changes of bioactive GA₁ and its direct biosynthetic precursor, GA₂₀, and its 2-hydroxylated catabolite, GA₈. We examined correlation (using Pearson *r* correlation) between volume index and GAs that showed significantly higher levels in cisgenic plants, and tested the ratios of GAs to their direct biosynthetic precursor using ANOVA and Tukey's HSD. In analyzing GA₈/GA₁ ratios, a weighted regression model was used to allow for heterogenous variances among groups. An outlier from pGA20 events was dropped during analysis of GA₂₀/GA₁₉ because of its unusually high GA level.

Results

Promoter activity

To verify activity and conduct a qualitative analysis of tissue specificity of expression of the promoters used to drive the *PtGA20ox2-2* gene, we collected tissues from plants transformed with each of the promoters driving a *GUS* reporter gene and performed histochemical analysis (Table S6 and Fig. S5). The GA20 and CES promoters showed strongest expression in fully elongated or elongating internodes, with average scores of 1.3 and 2.3, respectively. The EXP promoter showed its strongest expression in mature root sections

(average score of 1.2). The GA2 promoter showed highest activity in shoot tips and young leaves, with an average score of 1.8 in these tissues. All promoters produced highly consistent expression patterns (Fig. S6). For example, all of the pGA20:GUS- and pCES:GUS-transformed events (16 each) showed expression in fully elongated or elongating internodes, 82 % of pEXP:GUS-transformed events showed expression in mature root sections, and 80 % of pGA2:GUS-transformed events showed expression predominantly in shoot tips and young leaves.

For promoters GA20, CES, and EXP, GUS expression was consistent with expectation based on microarray data for their associated native genes (Table S7). The GUS-assay-based specificity index (specificity index_G) showed that the GA20 promoter had the highest specificity (1.9), followed by CES (1.3), and EXP (1.1). The GA2 promoter, however, showed higher specificity in leaves (specificity index_G of 1.3) rather than in stems as had been predicted (specificity index_R of 1.7).

Because we were unable to analyze the expression pattern of promoter RGL with GUS assay due to a construct error (see “Materials and methods”), we verified its activity in pRGL:GA20-transformed plants by study of its expression when fused to the PtGA20ox2-2 protein coding gene (Fig. S7). Semi-quantitative RT-PCR revealed bands in leaf samples from all of the six tested pRGL:GA20-transformed events, but no bands in leaf samples from the transgenic control plants transformed with the pBART empty vector (Fig. S7c). qRT-PCR analysis confirmed the expression of the intragene driven by the RGL promoter in leaf samples, with up to 12-fold greater expression in pRGL:GA20-transformed events compared to those transformed with pBART (the empty vector control) (Fig. S7d). We detected very little expression in shoot tips in four of the tested pRGL:GA20-transformed events; however, the other two events had an average of 5-fold higher expression of the intragene compared with that in the control (Fig. S7e).

Genetic modifications change biomass growth rate and allocation under greenhouse conditions

To examine the performance of all transformed poplars under controlled conditions, we performed six greenhouse trials from 2007 to 2009 (Table S2). The entire population of transformed plants appeared normal and healthy in the greenhouse during all trials, with no physiological or morphological abnormalities when compared with the wild-type control (Fig. 3a, b).

When considering all transformed events, seven out of the eight tested constructs conferred higher volume index (white bars in Fig. 4); the improvement varied from 18 to 146 %. pGA20, pPHOR (July 2009), pRGL:GA20 (July 2008), and pGA2:GA20 (July 2008) caused a statistically significant

improvement in volume index (Table 2), in some cases strikingly so (e.g., pRGL:GA20 tested in July 2008; Fig. 5). When considering only the top 25 % of the transformed events, all of the eight tested constructs induced the growth improvement, which varied between 36 and 227 %, with plants transformed with the pGA20 and pRGL:GA20 (July 2008) constructs showing more than 100 % growth improvement (black bars in Fig. 4). However, the results among different greenhouse trials were variable. For example, the high growth improvement (above 50 %) conferred by the pRGL:GA20 and the pGA2:GA20 constructs in the trial done in July 2008 was not observed in the later trial done in August 2009, where plants transformed with the two constructs showed a slight decrease in volume index, while in the case of pPHOR, events in the July 2009 trial showed greater growth improvement compared with those in the June 2008 trial (Fig. 4 and Table 2). The Spearman rank correlation tests, measuring the stability of event performance between repeat greenhouse tests, was significant for the pGA2:GA20 ($p=0.016$) but non-significant for pPHOR or pRGL:GA20 transformants (Table S8), suggesting inconsistent growth performance of events within these latter two constructs.

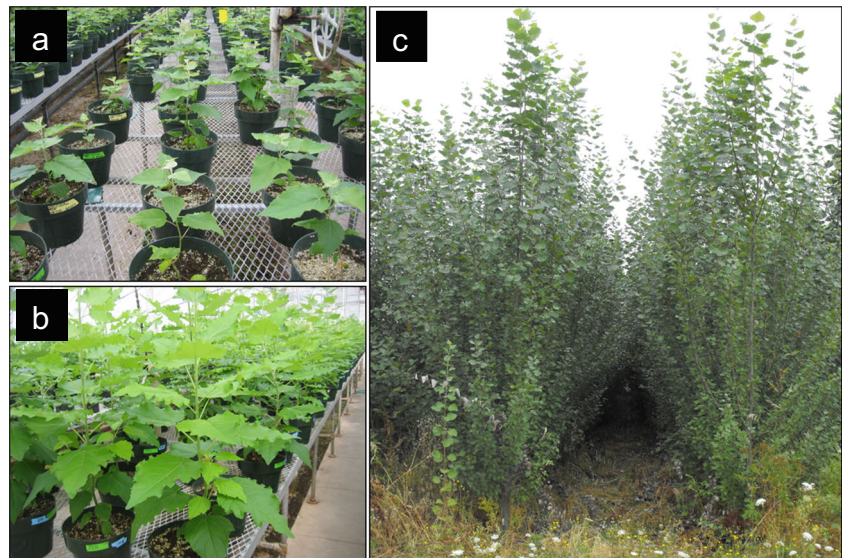
We also calculated root fraction to determine whether the different rDNA modifications caused changes in biomass allocation to roots vs. shoots. Four constructs caused apparent reductions in root fraction compared with controls (Fig. 6). The reduced root fractions in pRGL:GA20-, pGA2:GA20-, pGA20-, and pCES:GA20-transformed plants varied from -16 to -7 %; however, only the reduction caused by pGA20 was statistically significant (Table 2; $p=0.012$). pPHOR-transformed plants showed a 5 % increase in root fraction in the June 2008 trial but had an almost identical root fraction as controls in the July 2009 trial (Fig. 6). During the October 2008 trial, however, pEXP:GA20 imparted a highly significant 19 % improvement (Fig. 6 and Table 2; $p=0.003$) in root fraction.

Intragenes affect dynamics of biomass allocation

To better understand the variation and dynamics in biomass allocation, we separately harvested leaf, stem, and root samples from the pGA2:GA20- and pRGL:GA20-transformed plants at four different time periods (called harvests) during the August 2009 trial. These constructs were chosen because they showed higher volume indices but lower root fractions in greenhouse studies conducted in 2008 (see above).

When different organs' biomasses were analyzed separately, pRGL:GA20-transformed plants had a significantly higher shoot fraction than pooled controls (i.e., combined wild-type and empty-vector controls, discussed under statistical analyses) in the third harvest ($p=0.014$; Fig. 7 and Table 3). The pGA2:GA20-transformed plants did not significantly differ from the pooled controls in any of the four harvests. We also compared leaf biomass and stem biomass fractions for each harvest

Fig. 3 Recombinant DNA (rDNA) modified poplars in greenhouse and field trials. **a** pGA20- and pPHOR-cisgenic plants during their second week of growth in greenhouse. **b** pRGL:GA20- and pGA2:GA20-intragenic plants during their fifth week of growth in greenhouse. **c** pGA20-cisgenic poplars in field. Images were taken on July 6, 2009, Aug 14, 2008, and Aug 19, 2010, respectively



between the two intragenic populations and pooled controls; neither pRGL:GA20- nor pGA2:GA20-transformed plants showed significant differences from the controls, however, plants transformed with pRGL:GA20 differed from those transformed with pGA2:GA20 ($p=0.015$, leaf fraction from the second harvest, and $p=0.020$, stem fraction from the fourth harvest; Table S9).

To analyze biomass distribution trends over harvests, we performed weighted regression to model the relationship between shoot, stem, and root biomass vs. total biomass growth. pRGL:GA20-transformed plants allocated significantly more biomass to their shoots compared to controls ($p<0.001$; Fig. 8 and Table 4); for every 100 g increase in total biomass, there was an expectation that 69.4 g would be distributed to shoots in the pooled control group but 73.6 g in the pRGL:GA20 group (a difference of 6 %). The distribution of total biomass to shoots in pGA2:GA20-transformed plants did not differ significantly from the pooled controls ($p=0.082$; Fig. 8 and Table 4). When leaf and stem biomass vs. total biomass was

each analyzed, both pRGL:GA20- and pGA2:GA20-transformed plants allocated significantly more biomass to their leaves than did controls (Fig. S8 and Table S10); however, there were no significant differences in stem fraction among the three groups (Fig. S9 and Table S10).

We compared residual variances to examine if GA intragenes increased developmental instability (Table 5 and S11). The results indicated that pRGL:GA20, but not pGA2:GA20, conferred more shoot to total biomass fraction growth variance than did controls; however, no significant differences were found for leaf or stem fraction compared to controls for either construct.

Cisgenes affect gibberellin concentrations

We measured the levels of nine different GAs (Fig. 1) in our pGA20- and pPHOR-transformed poplars to test if a sample of the tested cisgenes affected GA at a detectable level. The

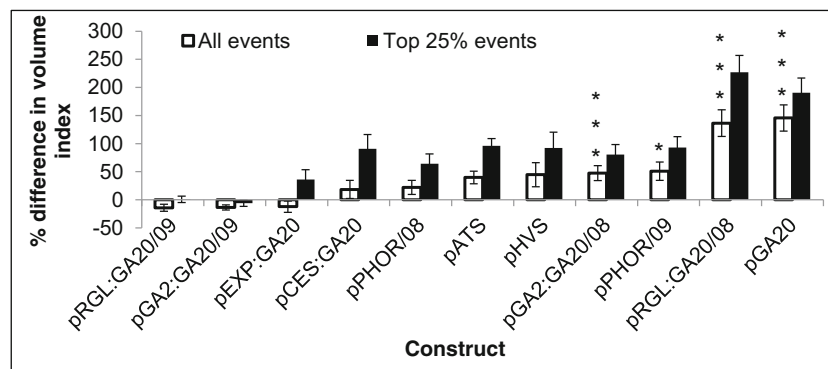


Fig. 4 Relative change in volume index of eight constructs tested in the greenhouse. Details on quantitative comparisons made are in Table S4. Years (08=2008, 09=2009) after constructs indicate plants transformed

these constructs were tested twice. Bars denote standard errors for percentage differences of events from control means. The asterisks indicate statistically significant differences (** $p<0.001$; * $p<0.05$)

Table 2 Results from ANOVA of greenhouse trials for volume index and root fraction

Construct	Month/year	Volume index		Root fraction	
		<i>p</i> value	+/-	<i>p</i> value	+/-
pGA20	July 2009	<i><0.0001</i>	+	<i>0.0115</i>	-
pPHOR	June 2008	0.12		0.27	
	July 2009	<i>0.0285</i>	+	1.00	
pRGL:GA20	July 2008	<i><0.0001</i>	+	0.89	
	August 2009	0.18		N/A	
pGA2:GA20	July 2008	<i>0.0008</i>	+	0.53	
	August 2009	0.07		N/A	
pEXP:GA20	October 2008	0.33		<i>0.0031</i>	+
pCES:GA20	October 2008	0.63		0.23	
pATS	September 2007	0.39		N/A	
pHVS	September 2007	0.26		N/A	

Italicized numbers indicate statistically significant differences ($p < 0.05$). The sign indicates direction of change compared to control for significant changes. Biomass data for pRGL:GA20 and pGA2:GA20 from the August 2009 trial was analyzed in sequential harvest study; no biomass data was collected from the September 2007 trial with pATS and pHVS constructs

transformed poplars showed similar trends in relative GA concentrations to that in wild-type controls. For example, the main bioactive GA present in both wild-type and transformed poplars was GA₁. It appeared that GA₄ was present, but it was not possible to measure it reliably because of low and/or comingled signals. Additionally, in wild-type and transformed plants, the bioactive GA₁ (black bars in Fig. 9a) had lower concentrations than its precursor GA₂₀ (white bars in Fig. 9a) and its catabolite GA₈ (black bars in Fig. 9b). GA₂₀, the precursor to the bioactive GA₁, showed lower concentrations than its catabolite, GA₂₉ (white bars in Fig. 9b).

When compared with wild-type control, we observed a 1.2- to 2.9-fold increase in all of the measured GAs in the transformed poplars. In the case of C₁₉ GAs (GA₂₀, GA₁, GA₈, GA₂₉, and GA₃₄), pGA20-cisgenic plants had the highest concentration, followed by pPHOR-cisgenic plants and the controls (Table 6). MANOVA (focusing on GA₁ and its direct precursor GA₂₀ and catabolite GA₈, discussed in statistical

Fig. 5 Volume indices of insertion events and pooled control for intragenic construct pRGL:GA20 tested in the July 2008 greenhouse trial. Bars show one standard error of the mean over five ramets per event

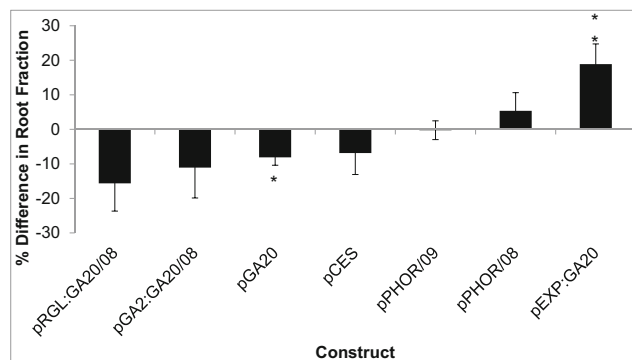
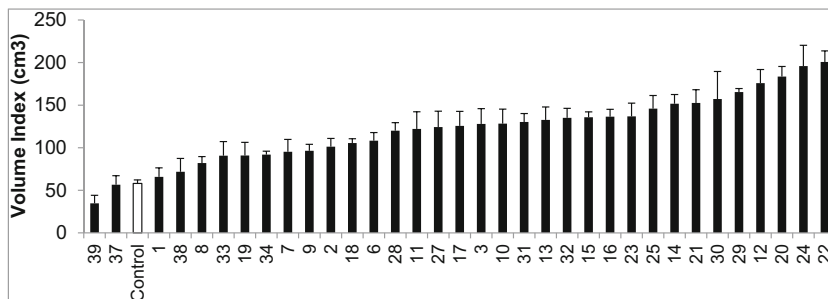


Fig. 6 Root fraction of rDNA modified plants tested in the greenhouse. Years (08=2008, 09=2009) after constructs indicate plants transformed these constructs were tested twice. Bars denote standard errors for percentage differences of events from control means. The asterisks indicate statistically significant differences (** $p < 0.01$; * $p < 0.05$)

analyses) indicated GA₁ and GA₂₀, significantly differed at the genotype level based on Wilks' lambda ($p = 0.005$ for GA₁, $p = 0.013$ for GA₂₀, and $p = 0.070$ for GA₈). ANOVA's of individual GAs showed that pGA20-transformed plants had a significantly higher concentration of both GA₂₀ ($p = 0.048$) and GA₁ ($p = 0.030$) than control plants. However, neither of GA₂₀ nor GA₁ concentration was significantly correlated with volume index in GA20 transformed plants (correlation coefficient=0.78 and $p = 0.06$ for GA₂₀; correlation coefficient=0.35 and $p = 0.82$ for GA₁). The pPHOR-transformed plants did not significantly differ from controls in any of the three GAs.

The negative and positive feedback regulation known for GA20ox, GA3ox, and GA2ox help to establish GA homeostasis (Fig. 1), and this could be a major factor that prevents tested genes from substantially disturbing GA metabolism. We therefore examined the effect of pGA20 and pPHOR on the 20-, 3-, and 2-oxidation processes with a focus on the conversions (i.e., ratios) between each GA and its direct biosynthetic precursor. Compared with control, pGA20- and pPHOR-transformed plants showed same trends in changes of the ratios examined (Fig. S10). Two exceptions were GA₄₄/GA₅₃ and GA₂₀/GA₁₉, where pGA20 conferred higher ratios while pPHOR conferred slightly lower ratios to control. The ratios of GA₈/GA₁ and GA₂₉/GA₂₀, regulated by the GA2ox, were significantly lower in pGA20- and/or pPHOR-transformed plants than those in controls ($p = 0.0163$ for GA₈/

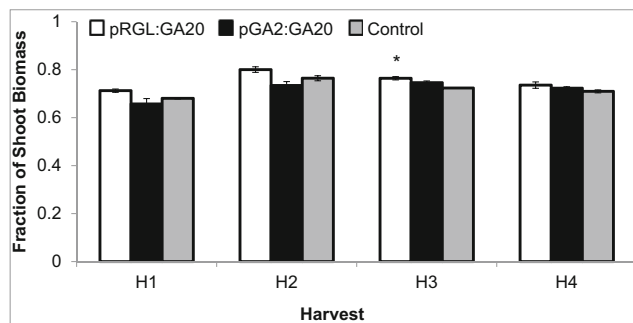


Fig. 7 Shoot fraction of pRGL:GA20- and pGA2:GA20-intragenic plants in the sequential harvest trial. H1 to H4 indicate four weekly harvests from May 2010 to June 2010. Bars denote standard error over biological replications. The asterisks indicate statistically significant differences ($*p < 0.05$)

GA₁ in pGA20; $p < 0.001$ for GA₂₉/GA₂₀ in pGA20; $p = 0.005$ for GA₂₉/GA₂₀ in pPHOR). No significant changes were found in GA conversions regulated by GA20ox or GA3ox.

Field studies

We performed four field trials (two in the summer of 2008 and two in the spring of 2009) to examine the field growth of poplars modified with six of the tested constructs (Table S3). As was the case with our greenhouse trials, all of the trees growing in the field looked normal and healthy (Fig. 3c).

Trees transformed with pRGL:GA20, pGA2:GA20, and pATS showed a noticeably higher volume index (or diameter squared) when compared with controls (white bars in Fig. 10); the improvement conferred by pRGL:GA20 was statistically significant ($p = 0.04$; Table 7). When considering only the top 25 % of the transformed events (as might be chosen for possible application in a breeding program), the growth improvement varied between 13 and 89 %, with plants transformed with the pRGL:GA20 and pATS constructs showing more than 50 % growth improvement (black bars in Fig. 10). When comparing results from the greenhouse and the field, we obtained generally similar trends, with notable exceptions being pGA20-, pPHOR-, and pHVS-transformed plants.

Table 3 Comparison of the mean shoot fractions among pRGL:GA20- and pGA2:GA20-transformed plants and pooled controls

Construct	<i>p</i> value		
	Second harvest	Third harvest	Fourth harvest
ANOVA	<i>0.009</i>	<i>0.014</i>	0.185
pRGL:GA20 vs. control	0.210	<i>0.014</i>	N/A
pGA2:GA20 vs. control	0.265	0.133	N/A
pRGL:GA20 vs. pGA2:GA20	<i>0.007</i>	0.087	N/A

Tukey's HSD was performed if ANOVA suggested statistically significant differences among the three groups. Italicized numbers indicate statistically significant differences ($p < 0.05$). N/A indicates no Tukey's test was done due to non-significant ANOVA. Data from the first harvest was excluded from analysis to avoid potential effects of transplant shock on plant growth

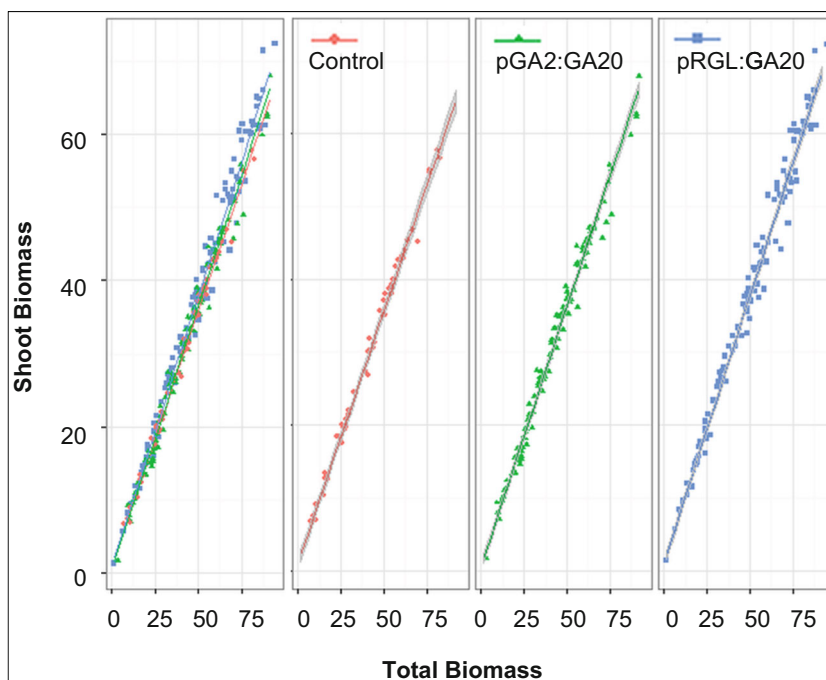
pGA20-transformed plants showed a 146 % volume index improvement (significant) in the greenhouse but had almost identical volume index as the controls under field conditions. pPHOR-transformed plants that had a 26 % volume index improvement (non-significant) in the greenhouse had a 22 % reduction in average volume index in the field. A similar trend was observed for pHVS-transformed plants. Growth in the field did not correlate with growth in the greenhouse. Spearman rank correlation analysis of volume index between events grown in both greenhouse and field tests was significant for only pRGL:GA20 (tested in 2009 field and July 2008 GH trials; $p = 0.042$), but non-significant for other constructs (Table S12).

Discussion

We report on a number of overlapping studies, conducted over 6 years, that investigated the extent to which a variety of genetic perturbations of GA metabolism or signaling might be useful tools for modifying tree growth rate and allocation of biomass. We tested eight promoter-coding region combinations of GA pathway components, including two cisgenes (pGA20 and pPHOR), four intragenes (pRGL:GA20, pGA2:GA20, pEXP:GA20, and pCES:GA20), and two transgenes (pATS and pHVS), for their ability to alter GA homeostasis and growth in poplar. Our results suggest that modified GA levels in poplar can indeed lead to changes in either shoot biomass or its allocation among organs, while at the same time produce plants with relatively normal physiology and adaptation (e.g., lacking severe pleiotropic phenotypes).

Our characterization of GA concentrations suggest that GAs from the 13-hydroxylation pathway are the dominant forms in our wild-type and cisgenic plants, and GA₁, rather than GA₄, is the major bioactive gibberellin. These findings are consistent with our earlier characterization of GA concentrations in wild-type and *gai*- and *rgl1*-transgenic poplars, where the level of GA₁ was much higher than that of GA₄

Fig. 8 Regression lines indicating the relationships between shoot biomass (grams dry weight) and total plant biomass growth in all genotypes (left) and then pooled controls (red diamond), pGA2:GA20 (green triangle), and pRGL:GA20 (blue square) transformed plants. The gray shading shows 95 % confidence intervals (statistics shown in Table 4)



(Busov et al. 2006). However, Eriksson et al. (2000) and Israelsson et al. (2004) found higher levels of GA₄ than GA₁ in the leaves of both wild-type and transgenic poplars. These differences may be due to the use of different poplar clones (*Populus tremula* L. × *P. tremuloides* Michx. clone T89 in their studies, vs. 717-1B4 *P. tremula* × *P. alba* in our studies), or growth conditions. The source of the *GA20ox* gene may also contribute to the differences; Eriksson et al. (2000) used the *GA20ox* gene derived from *Arabidopsis* (*AtGA20ox1*) to induce overexpression, whereas we used a native poplar gene (*PtGA20ox7*).

Although the effects of feedback regulation of 2-ODDs could have prevented plants from producing excessive amounts of bioactive GAs, we were still able to observe increased levels of each of the GAs we measured, as well as disturbed GA homeostasis in the pGA20- and pPHOR-cisgenic poplars. The concentrations of GA₂₀ and GA₁ in pGA20-transformed plants were significantly higher than

those in controls; this alone could be an explanation for the decreased in the ratios of GA₂₉/GA₂₀ and GA₈/GA₁ in pGA20-transformed plants. The decrease in the two ratios could also be due to a slower turnover from the GA2ox substrates to the products, since similar changes were also observed in pPHOR-transformed plants, where the levels of GA2ox substrates showed no difference from the control. In contrast to our observations, however, Eriksson et al. (2000) reported decreased levels of GA20ox substrates (GA₅₃ and GA₁₉) and sharply increased GA₈/GA₁ ratios in their *AtGA20ox1*-transgenic poplar clones. A reason could be the CaMV 35S promoter used in their study. It possibly led to very strong expression of the transgene, and therefore, severely disturbed the GA pathway and its feedback regulation.

Modified expression of genes encoding GA biosynthetic enzyme (GA20ox) and signaling regulators (PHOR and SPY) did not cause any notable morphological changes in either greenhouse or field conditions, but did lead to strong

Table 4 Summary of estimated slopes and 95 % confidence intervals (CIs) for regression lines of organ to total biomass

Construct	Estimated slope ^a	Upper and low 95 % CIs
pRGL:GA20	0.736***	(0.724, 0.748)
pGA2:GA20	0.717	(0.702, 0.732)
Pooled controls	0.694	(0.673, 0.715)

****p*<0.001, statistically significant difference

^a Fitted regression models: pRGL:GA20: shoot=1.004+0.736×biomass; pGA2:GA20: shoot=0.552+0.717×biomass; control: shoot=1.030+0.694×biomass

Table 5 Ratios of residual variances and associated statistical significance levels using Levene’s test of homogeneity of variances

Construct	<i>p</i> value		
	Second harvest	Third harvest	Fourth harvest
pRGL:GA20 vs. control	1.843	4.921*	4.627**
pGA2:GA20 vs. control	3.269*	3.288	1.850

Asterisks and bold indicate statistically significant differences (**p*<0.05; ***p*<0.01). Data from the first harvest was excluded from analysis to avoid potential effects of transplant shock on plant growth

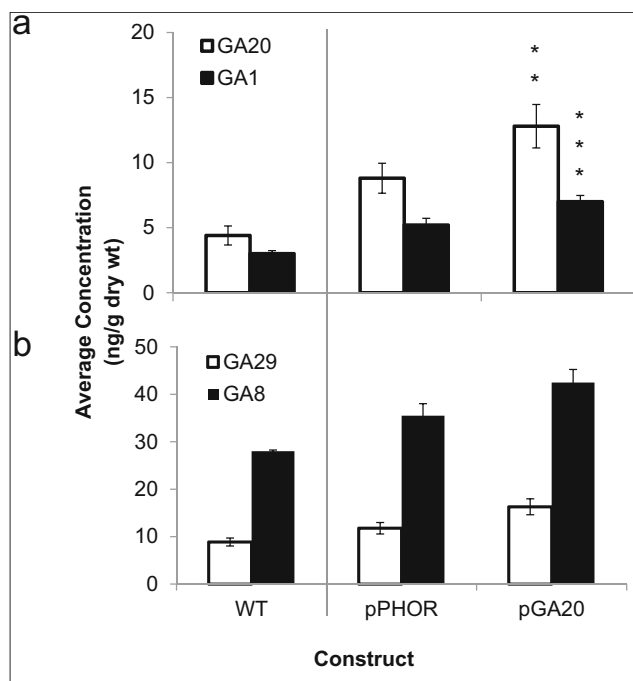


Fig. 9 Gibberellin (GA) concentrations in leaves of pGA20- and pPHOR-transformed plants compared with wild-type (WT) controls. **a** The concentrations of bioactive GA₁ compared to its precursor GA₂₀. **b** The concentrations of the inactive catabolites, GA₂₉ (from GA₂₀) and GA₈ (from GA₁). Note the different y-axis scales. Bars denote standard error over replicate determinations from pooled tissue samples (Table 6). The asterisks indicate statistically significant differences (***) $p < 0.001$; ** $p < 0.01$

growth improvements in some experiments. Two poplar *PHOR1* orthologues, *PtPHOR1-1* and *PtPHOR1-2*, have been identified previously (Zawaski et al. 2012). Unlike *PtPHOR1-1* which is short-day inducible and preferably expressed in roots, the *PtPHOR1-2* gene tested in this study has been suggested to be expressed independently of short-day treatment and uniformly in leaf, stem, and root. Similar to our observation, significant growth improvement in shoots and roots in *PtPHOR1-2* overexpressing poplars has also been observed by Zawaski et al. (2012), where the gene was driven by the CaMV 35S promoter and constitutively expressed.

Under greenhouse condition, the observed effects from the genes largely agreed with our expectations. For example, the EXP promoter (*PtEXPB1*) was chosen because it is mainly

expressed in roots (microarray data produced by Rodgers-Melnick et al. 2012). The significantly increased root fraction in pEXP:GA20-transformed plants suggests an increased expression of GA20ox in roots. *PtEXPB1* belongs to the β -expansin (EXPB) gene family, whose expression pattern remains unexplored in poplar. Like other expansins, EXPBs are cell wall-loosening proteins. Studies in several plant species have suggested tissue-specific expression patterns and diverse biological functions of EXPBs. In maize, where EXPBs were firstly identified as group-1 grass pollen allergens, some EXPBs (e.g., *Zeam1*) are known to play a role in pollen tube penetration (Cosgrove et al. 1997), while others (e.g., *ZmEXPB2*) appear to take part in root elongation (Kam et al. 2005). Root-specific/preferred EXPBs have also been isolated from barley (*HvEXPB1*), wheat (*TaEXPB23*), rice (*OsEXPB5*), *Arabidopsis* (*AtEXPB1*), and soybean (*GmEXPB1*, *GmEXPB2*, and *GmEXPB6*) (Kwasniewski and Szarejko 2006; Gao et al. 2008; Kwon et al. 2008; Won et al. 2010; Li et al. 2011, 2013). The root-specific activity of *HvEXPB1* from barley and *OsEXPB5* from rice has been shown to be conferred by root hair specific *cis*-elements (RHEs) (Won et al. 2010).

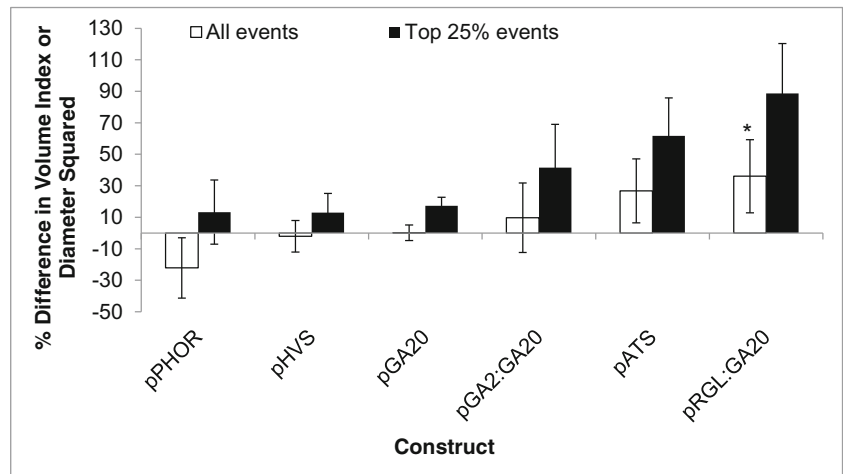
We were surprised by the growth advantage conferred by both the *SPY* constructs. As mentioned earlier, *SPY* is a negative regulator of GA signaling; the expectation from using these constructs was that we would produce dwarf plants. The results, however, were the opposite: *SPY* genes from both *Arabidopsis* (*AtSPY*) and barley (*HvSPY*) conferred growth improvements in the transgenic poplars. Interestingly, both *SPY* orthologs have caused growth retardation as well as acceleration in other plant species. Overexpression of *AtSPY* inhibited shoot elongation in *Petunia* (Izhaki et al. 2001), but promoted hypocotyl, rosette, and stem growth in *Arabidopsis* (Swain et al. 2001). The *HvSPY* adopted in our study, although with partial deletion in the eighth and ninth tetratricopeptide repeats (TPRs), retains *SPY* function (Filardo et al. 2009). By overexpressing the modified *HvSPY*, Filardo et al. (2009) observed reduced height but increased rosette size in *spy-4 Arabidopsis*, which usually has a long stem but small rosette size; however, they did not see clear morphological alterations in wild type *Arabidopsis*. The variations in *SPY*-induced phenotypic changes are

Table 6 Concentrations (ng/g dry weight) of eight different GAs measured in leaf samples

Construct	GA ₅₃	GA ₄₄	GA ₁₉	GA ₂₀	GA ₁	GA ₈	GA ₂₉	GA ₃₄
pGA20	21.1 (±1.17)	15.9 (±0.78)	39.3 (±2.02)	12.8 (±1.67)	7.0 (±0.48)	42.5 (±2.76)	16.3 (±1.68)	6.2 (±0.47)
pPHOR	23.7 (±1.58)	14.7 (±1.60)	45.1 (±5.09)	8.9 (±1.15)	5.2 (±0.52)	35.5 (±2.55)	11.8 (±1.21)	4.4 (±0.40)
Wild-type control	15.3 (±2.29)	9.7 (±2.39)	21.5 (±3.04)	4.4 (±0.73)	3.0 (±0.24)	28.0 (±0.25)	8.9 (±0.84)	3.6 (±1.41)

Brackets represent standard errors over twenty replications (ten biological replicates, each with two pools of independent samples) for pGA20 and pPHOR, and two replications (i.e., two pools of samples) for wild-type control

Fig. 10 Relative changes in volume index or diameter squared of transformed plants from field tests. Bars denote standard errors for percentage differences of events from control means. The asterisks indicate statistically significant differences ($*p < 0.05$)



believed due to its additional roles in cytokinin and redox signaling, and consequent effects on plant root development, brassinosteroid synthesis, circadian rhythm and photoperiodic flowering, and abiotic stress response (Tseng et al. 2004; Swain et al. 2001; Shimada et al. 2006; Filardo et al. 2009; Qin et al. 2011; Steiner et al. 2012; Cui et al. 2014).

Studies of biomass allocation showed that the increase in biomass growth we observed was associated with preferential allocation to shoots. pGA2:GA20- and pRGL:GA20-transformed plants showed the highest volume indices but produced lower root fractions. pGA2:GA20-transformed plants showed increased leaf mass fraction, and decreased stem mass and root mass fractions. This was consistent with previous results showing that although GAs are positive regulator of root growth, they significantly repress root development (Eriksson et al. 2000; Busov et al. 2006; Gou et al. 2010, 2011; Jeon et al. 2015). The increase in leaf mass fraction in our pGA2:GA20-intragenic plants was comparable to the slight increase shown by Eriksson et al. (2000). Likewise, pRGL:GA20-transformed plants showed increased leaf and shoot mass fractions, and decreased root mass fraction. This suggests that pGA2:GA20- and pRGL:GA20-transformed

plants allocated greater biomass to shoots under greenhouse conditions, where plants had a stable temperature regime, no wind or insolation stress, and did not suffer water or nutrient deficiencies. The modified biomass allocation in plants transformed with pRGL:GA20 was further confirmed in our sequential harvest study, where we found that the pRGL:GA20-transformed plants grew faster and allocated significantly greater biomass to their leaves. Overall, the changes in biomass allocation we observed—with preferential root mass or shoot mass obtained with different constructs—if expressed in the field could rise to large cumulative differences in relative organ size in trees, with potential impacts on tree growth rate, stability, wind-firmness, drought tolerance, and capacity for bioremediation (Klocko et al. 2013). These possible effects require evaluation under experimental manipulations, and in long-term field trials.

To our surprise, retesting many of the same events in subsequent greenhouse trials failed to show consistent levels of growth enhancement. Initial testing of pPHOR-, pRGL:GA20-, and pGA2:GA20-transformed plants were started in June or July in 2008 and lasted for 2 months. Subsets of events, representing high, median, and low growth rates, were tested again for 1 month, starting in July or August in 2009. Although we tried to keep greenhouse conditions similar among the two trials, including water and fertilizer regimes, greenhouse conditions still vary widely, particularly the levels of light and high and low temperatures. Although performances of pGA2:GA20-transformed events were correlated in the two tests, improved performance was not seen in the second test, and selective testing of specific pGA2:GA20-transformed events did not replicate the ranking in growth improvement seen in the original pGA2:GA20-intragenic population. The pGA2:GA20 construct might have conferred a benefit for early growth that dissipated during later stages of development, similar to that reported by Han et al. (2010). It is also possible that developmental changes that occurred as a result of many months of in vitro growth, or responses to the

Table 7 Results from analysis of variance of volume index or diameter squared for the field trials

Construct	<i>p</i> value	+/-
pGA20	0.63	
pPHOR	0.20	
pRGL:GA20	<i>0.04</i>	+
pGA2:GA20	0.25	
pATS	0.33	
pHVS	0.67	

Italicized number indicates statistically significant differences ($p < 0.05$). The plus signs mean increase in volume relative to the control

stress during re-acclimation and re-propagation in the greenhouse, resulted in the reduction of GA expression or the loss of responsiveness to GA overproduction.

The inconsistent growth performance seen between replicated greenhouse trials of the same events, and among greenhouse and field tests of the same events, could also have resulted from instability of transgene expression, which has been observed in poplars under in vitro, greenhouse, and field conditions (Kumar and Fladung 2001). It can result from gene loss, transcriptional gene silencing (TGS), or post-transcriptional gene silencing (PTGS) (Kooter et al. 1999; Fagard and Vaucheret 2000). Although high stability of transgene expression has been reported in a number of studies of transgenic poplars (reviewed by Brunner et al. 2007; Li et al. 2009), most studies have been of exogenous genes and promoters which do not resemble those present in the poplar genome. It is well known that extra copies of promoters and genes can trigger or increase methylation and homology-dependent silencing (Matzke et al. 2000). As very similar versions of most of the promoters and genes tested in our study were also present within the poplar genome, they may have been subject to TGS and PTGS. It will be of interest to further examine this, and to compare stability of trait expression when exogenous promoters and coding regions are used vs. native (cisgenic or intragenic) ones as tested here.

Genotype by environment interaction, as well as low statistical precision in these exploratory research trials, could also have been a major reason for the poor correlation among greenhouse and field performance. In the greenhouse, plants grow in a controlled environment where all environmental factors such as light, humidity, and temperature are controlled and mild. Plants are also fertilized and watered regularly, and do not have to compete with weeds for resources such as minerals and water. In the field, however, plants are subject to much more stressful and variable environmental conditions. Abiotic stresses, including cold, salt, and osmotic stresses, have been shown to affect the transcription level of *RGL3* and several *GA2ox* genes in *Arabidopsis* (reviewed by Colebrook et al. 2014). It is very likely that the promoters (e.g., RGL and GA2) employed in our study also show environmental instability, which would affect the transcription of *GA2ox* and consequently GA levels. The exposure to more extreme (low and high) temperatures could have led to differential reduction in bioactive GAs, similar to that observed in *Arabidopsis* and rice (*Oryza sativa*) (Toh et al. 2008; Colebrook et al. 2014; Sakata et al. 2014). GA signal transduction pathways strongly interact with phytohormone-regulated stress response pathways (reviewed by Weiss and Ori 2007; Colebrook et al. 2014), including antagonistically with the abscisic acid (ABA) pathway. It is well known that ABA is a central hormone that helps to organize plant responses to environmental stresses (Hofmann 2008; Finkelstein 2013). The stresses in the field, for example

reduced water availability, are likely to have elevated ABA production, in turn inhibiting GA effects. GAs have also been shown to negatively interact with ethylene signal transduction pathways; ethylene also plays a key role in organizing plant responses to various stresses (Hall and Smith 1995; Achard et al. 2003). The antagonistic interaction of ethylene and GA might also lead to suppression of the growth promoting effects of bioactive GAs.

The inconsistent growth enhancement and strong genotype by environment interaction observed in our study emphasizes the need for extensive field testing in applied biotechnology research. However, under current stringent laws and regulations pertaining to genetically modified crops, studies are either restricted to greenhouse testing alone (e.g., Eriksson et al. 2000; Han et al. 2010; Zawaski et al. 2012; Jeon et al. 2015), or confined to small-scale field trials for a minimum duration of time to minimize or avoid any flowering (e.g., 3 years in Jing et al. 2004; only 1 year in Kim et al. 2011). Policy changes are likely to be needed to provide a more conducive environment for field trials of transgenic trees if growth rate and plant architecture-modifying transgenes, especially cisgenes and intragenes whose effects are comparable to that from conventional breeding, are to be used in breeding programs (Strauss et al. 2015).

Finally, our work demonstrates both the benefits and risks of cis/intragenic approaches for disturbing endogenous GA levels and modifying architecture in poplars. Unlike poplars containing genes from sexually incompatible species (like those produced by Eriksson et al. 2000), most of the recombinant DNA-modified poplars tested in our study were similar in DNA sequence to those from conventional breeding, thus may be better accepted by the public (Holme et al. 2013). Additionally, cis/intragenic crops have been proposed to be excluded from GMO regulatory frameworks or regulated at a lower level of stringency, possibly avoiding much of the costs and stigma of transgenic GMOs (Schouten et al. 2006; Strauss et al. 2015). However, the instability of trait expression we observed suggests that cis/intragenics, at least for complex traits like hormone-based growth modification, might possibly hold risks of trait instability that are larger than those for transgenics. Additional research, particularly field studies, are needed to understand this possible dilemma.

Acknowledgments We thank Oregon State University (OSU) consulting statistician Ariel Muldoon for detailed advice on weighted regression analysis. We thank Dr. Steve Swain (CSIRO Plant Industry, Australia) for providing the two SPY transgene constructs (pATS and pHVS) for testing. We thank industrial members of the TBGRC Research Cooperative at OSU, the US Department of Energy's Poplar Genome-Based Research for Carbon Sequestration in Terrestrial Ecosystems Program (grant nos. DE-FG02-06ER64185 and DE-FG02-05ER64113), the Consortium for Plant Biotechnology Research, Inc. (GO12026-203A), ArborGen, LLC (04412), USDA CSREES (2003-04345), USDA (2004-35300-14687), and the Natural Sciences and Engineering Research Council (Canada - DG to SRood) for financial support.

Data Archiving Statement DNA sequences of promoters and coding regions reported in this manuscript will be submitted to the NCBI Genbank. Other data will be made available through the Dryad Digital Repository (<http://datadryad.org/depositing>).

Open Access This article is distributed under the terms of the Creative Commons Attribution 4.0 International License (<http://creativecommons.org/licenses/by/4.0/>), which permits unrestricted use, distribution, and reproduction in any medium, provided you give appropriate credit to the original author(s) and the source, provide a link to the Creative Commons license, and indicate if changes were made.

References

- Achard P, Genschik P (2009) Releasing the brakes of plant growth: how GAs shutdown DELLA proteins. *J Exp Bot* 60(4):1085–1092
- Achard P, Vriegen WH, Straeten DVD, Harberd NP (2003) Ethylene regulates Arabidopsis development via the modulation of DELLA protein growth repressor function. *Plant Cell* 15(12):2816–2825
- Amador V, Monte E, García-Martínez JL, Prat S (2001) Gibberellins signal nuclear import of PHOR1, a photoperiod-responsive protein with homology to drosophila armadillo. *Cell* 106(3):343–354
- Bhattacharya A, Kourmpetli S, Davey MR (2009) Practical applications of manipulating plant architecture by regulating gibberellin metabolism. *J Plant Growth Regul* 29(2):249–256
- Brunner A, Li J, DiFazio SP, Shevchenko O, Mohamed R, Montgomery B, Mohamed R, Wei H, Ma C, Elias AA, VanWormer K, Strauss SH (2007) Genetic containment of forest plantations. *Tree Genet Genomes* 3:75–100
- Busov VB, Meilan R, Pearce DW, Rood SB, Ma C, Tschaplinski TJ, Strauss SH (2006) Transgenic modification of gai or rg11 causes dwarfing and alters gibberellins, root growth, and metabolite profiles in *Populus*. *Planta* 224(2):288–299
- Busov VB, Brunner AM, Strauss SH (2008) Genes for control of plant stature and form. *New Phytol* 177(3):589–607
- Chabaud M, De Carvalho-Niebel F, Barker DG (2003) Efficient transformation of *Medicago truncatula* cv. Jemalong using the hypervirulent *Agrobacterium tumefaciens* strain AGL1. *Plant Cell Rep* 22(1):46–51
- Claeys H, De Bodd S, Inzé D (2014) Gibberellins and DELLAs: central nodes in growth regulatory networks. *Trends Plant Sci* 19(4):231–239
- Colebrook EH, Thomas SG, Phillips AL, Hedden P (2014) The role of gibberellin signalling in plant responses to abiotic stress. *J Exp Biol* 217(1):67–75
- Cosgrove DJ, Bedinger P, Durachko DM (1997) Group I allergens of grass pollen as cell wall-loosening agents. *Proc Natl Acad Sci* 94(12):6559–6564
- Cui H, Kong D, Wei P, Hao Y, Torii KU, Lee JS, Li J (2014) SPINDLY, ERECTA, and its ligand STOMAGEN have a role in redox-mediated cortex proliferation in the Arabidopsis root. *Mol Plant* 7(12):1727–1739
- Davière JM, Achard P (2013) Gibberellin signaling in plants. *Development* 140(6):1147–1151
- Eriksson ME, Israelsson M, Olsson O, Moritz T (2000) Increased gibberellin biosynthesis in transgenic trees promotes growth, biomass production and xylem fiber length. *Nat Biotechnol* 18(7):784–788
- Fagard M, Vaucheret H (2000) (TRANS)GENE SILENCING IN PLANTS: how many mechanisms? *Annu Rev Plant Physiol Plant Mol Biol* 51(1):167–194
- Filardo F, Robertson M, Singh DP, Parish RW, Swain SM (2009) Functional analysis of HvSPY, a negative regulator of GA response, in barley aleurone cells and Arabidopsis. *Planta* 229(3):523–537
- Filichkin SA, Meilan R, Busov VB, Ma C, Brunner AM, Strauss SH (2006) Alcohol-inducible gene expression in transgenic *Populus*. *Plant Cell Rep* 25(7):660–667
- Finkelstein R (2013) Abscisic acid synthesis and response. *The Arabidopsis Book*, e0016
- Gallego-Giraldo L, Ubeda-Tomás S, Gisbert C, García-Martínez JL, Moritz T, López-Díaz I (2008) Gibberellin homeostasis in tobacco is regulated by gibberellin metabolism genes with different gibberellin sensitivity. *Plant Cell Physiol* 49(5):679–690
- Gao Q, Zhao M, Li F, Guo Q, Xing S, Wang W (2008) Expansins and coleoptile elongation in wheat. *Protoplasma* 233(1–2):73–81
- García-Hurtado N, Carrera E, Ruiz-Rivero O, López-Gresa MP, Hedden P, Gong F, García-Martínez JL (2012) The characterization of transgenic tomato overexpressing gibberellin 20-oxidase reveals induction of parthenocarpic fruit growth, higher yield, and alteration of the gibberellin biosynthetic pathway. *J Exp Bot* 63(16):5803–5813
- Gleave AP (1992) A versatile binary vector system with a T-DNA organisational structure conducive to efficient integration of cloned DNA into the plant genome. *Plant Mol Biol* 20(6):1203–1207
- Gou J, Strauss SH, Tsai CJ, Fang K, Chen Y, Jiang X, Busov VB (2010) Gibberellins regulate lateral root formation in populus through interactions with auxin and other hormones. *Plant Cell* 22(3):623–639
- Gou J, Ma C, Kadmiel M, Gai Y, Strauss SH, Jiang X, Busov VB (2011) Tissue-specific expression of *Populus* C₁₉ GA 2-oxidases differentially regulate above- and below-ground biomass growth through control of bioactive GA concentrations. *New Phytol* 192(3):626–639
- Hall MA, Smith AR (1995) Ethylene and the responses of plants to stress. *Bulg J Plant Physiol* 21(2–3):71–79
- Han KM, Dharmawardhana P, Arias RS, Ma C, Busov VB, Strauss SH (2010) Gibberellin-associated cisgenes modify growth, stature and wood properties in *Populus*. *Plant Biotechnol J* 9(2):162–178
- Hedden P, Phillips AL (2000a) Gibberellin metabolism: new insights revealed by the genes. *Trends Plant Sci* 5(12):523–530
- Hedden P, Phillips AL (2000b) Manipulation of hormone biosynthetic genes in transgenic plants. *Curr Opin Biotechnol* 11(2):130–137
- Hedden P, Thomas SG (2012) Gibberellin biosynthesis and its regulation. *Biochem J* 444(1):11–25
- Hofmann N (2008) Abscisic acid-mediated suppression of systemic acquired resistance signaling. *Plant Cell* 20(6):1425
- Holme IB, Wendt T, Holm PB (2013) Intragenesis and cisgenesis as alternatives to transgenic crop development. *Plant Biotechnol J* 11(4):395–407
- Israelsson M, Mellerowicz E, Chono M, Gullberg J, Moritz T (2004) Cloning and overproduction of gibberellin 3-oxidase in hybrid aspen trees. Effects on gibberellin homeostasis and development. *Plant Physiol* 135(1):221–223
- Izhaki A, Swain SM, Tseng T, Borochoy A, Olszewski NE, Weiss D (2001) The role of SPY and its TPR domain in the regulation of gibberellin action throughout the life cycle of *Petunia hybrida* plants. *Plant J* 28(2):181–190
- Jeon HW, Cho JS, Park EJ, Han KH, Choi YI, Ko JH (2015) Developing xylem-preferential expression of PdGA20ox1, a gibberellin 20-oxidase 1 from *Pinus densiflora*, improves woody biomass production in a hybrid poplar. *Plant Biotechnol J*. doi: 10.1111/pbi.12484
- Jing ZP, Gallardo F, Pascual MB, Sampalo R, Romero J, De Navarra AT, Cánovas FM (2004) Improved growth in a field trial of transgenic hybrid poplar overexpressing glutamine synthetase. *New Phytol* 164(1):137–145
- Kam MJ, Yun HS, Kaufman PB, Chang SC, Kim SK (2005) Two expansins, EXP1 and EXPB2, are correlated with the growth and development of maize roots. *J Plant Biol* 48(3):304–310

- Kim YH, Kim MD, Choi YI, Park SC, Yun DJ, Noh EW, Lee HS, Kwak SS (2011) Transgenic poplar expressing Arabidopsis NDPK2 enhances growth as well as oxidative stress tolerance. *Plant Biotechnol J* 9(3):334–347
- Klocko AL, Stanton B, Oosten C, Strauss SH (2013). Green revolution plantations: could short trees be a big thing?. ISB News Report, May 2013: 7–9
- Kooter JM, Matzke MA, Meyer P (1999) Listening to the silent genes: transgene silencing, gene regulation and pathogen control. *Trends Plant Sci* 4(9):340–347
- Kumar S, Fladung M (2001) Gene stability in transgenic aspen (*Populus*). II. Molecular characterization of variable expression of transgene in wild and hybrid aspen. *Planta* 213(5):731–740
- Kwasniewski M, Szarejko I (2006) Molecular cloning and characterization of β -expansin gene related to root hair formation in barley. *Plant Physiol* 141(3):1149–1158
- Kwon YR, Lee HJ, Kim KH, Hong SW, Lee SJ, Lee H (2008) Ectopic expression of Expansin3 or Expansin β 1 causes enhanced hormone and salt stress sensitivity in Arabidopsis. *Biotechnol Lett* 30(7):1281–1288
- Li J, Brunner AM, Meilan R, Strauss SH (2009) Stability of transgenes in trees: expression of two reporter genes in poplar over three field seasons. *Tree Physiol* 29(2):299–312
- Li F, Xing S, Guo Q, Zhao M, Zhang J, Gao Q, Wang G, Wang W (2011) Drought tolerance through over-expression of the expansin gene TaEXPB23 in transgenic tobacco. *J Plant Physiol* 168(9):960–966
- Li X, Zhao J, Walk TC, Liao H (2013) Characterization of soybean β -expansin genes and their expression responses to symbiosis, nutrient deficiency, and hormone treatment. *Appl Microbiol Biotechnol* 98(6):2805–2817
- Matzke MA, Mette MF, Matzke AJM (2000) Transgene silencing by the host genome defense: implications for the evolution of epigenetic control mechanisms in plants and vertebrates. *Plant Mol Biol* 43(2–3):401–415
- Mittal A, Decker SR (2013) Special issue: application of biotechnology for biofuels: transforming biomass to biofuels. *J. Biotech* 3(5):341–343
- Olszewski N, Sun T, Gubler F (2002) Gibberellin signaling biosynthesis, catabolism, and response pathways. *Plant Cell Online* 14(suppl 1):S61–S80
- Otani M, Meguro S, Gondaira H, Hayashi M, Saito M, Han DS, Nakano M, Mori S, Li T, Niki T, Nishijima T, Koshioka M (2014) Overexpression of the gibberellin 20-oxidase or gibberellin 3-oxidase gene from *Torenia fournieri* affecting plant morphology in transgenic *Tricyrtis* sp. *Int Soc Hortic Sci - ISHS* 23–30
- Pearce DW, Hutt OE, Rood SB, Mander LN (2002) Gibberellins in shoots and developing capsules of *Populus* species. *Phytochemistry* 59(6):679–687
- Qin F, Kodaira KS, Maruyama K, Mizoi J, Tran LS, Fujita Y, Morimoto K, Shinozaki K, Yamaguchi-Shinozaki K (2011) SPINDLY, a negative regulator of gibberellin acid signaling, is involved in the plant abiotic stress response. *Plant Physiol* 157(4):1900–1913
- Qin X, Liu JH, Zhao WS, Chen XJ, Guo ZJ, Peng YL (2013) Gibberellin 20-oxidase gene OsGA20ox3 regulates plant stature and disease development in rice. *Mol Plant-Microbe Interact: MPMI* 26(2):227–239
- Ragauskas AJ, Williams CK, Davison BH, Britovsek G, Cairney J, Eckert CA, Frederick WJ Jr, Hallett JP, Leak DJ, Liotta CL, Mielenz JR, Murphy R, Templar R, Tschaplinski T (2006) The path forward for biofuels and biomaterials. *Science* 311(5760):484–489
- Rodgers-Melnick E, Mane SP, Dharmawardhana P, Slavov GT, Crasta OR, Strauss SH, Brunner AM, DiFazio SP (2012) Contrasting patterns of evolution following whole genome versus tandem duplication events in *Populus*. *Genome Res* 22(1):95–105
- Rood S, Hedden P (1994) Convergent pathways of gibberellin A₁ biosynthesis in *Brassica*. *Plant Growth Regul* 15(3):241–246
- Sakata T, Oda S, Tsunaga Y, Shomura H, Kawagishi-Kobayashi M, Aya K, Saeiki K, Endo T, Nagano K, Kojima M, Sakakibara H, Watanabe M, Matsuoka M, Higashitani A (2014) Reduction of gibberellin by low temperature disrupts pollen development in rice. *Plant Physiol* 164(4):2011–2019
- Schouten HJ, Krens FA, Jacobsen E (2006) Cisgenic plants are similar to traditionally bred plants: International regulations for genetically modified organisms should be altered to exempt cisgenesis. *EMBO Rep* 7(8):750–753
- Shimada A, Ueguchi-Tanaka M, Sakamoto T, Fujioka S, Takatsuto S, Yoshida S, Sazuka T, Ashikari M, Matsuoka M (2006) The rice SPINDLY gene functions as a negative regulator of gibberellin signaling by controlling the suppressive function of the DELLA protein, SLR1, and modulating brassinosteroid synthesis. *Plant J* 48(3):390–402
- Silverstone AL, Tseng TS, Swain SM, Dill A, Jeong SY, Olszewski NE, Sun T (2007) Functional analysis of SPINDLY in gibberellin signaling in Arabidopsis. *Plant Physiol* 143(2):987–1000
- Sponsel VM, Hedden P (2010) Gibberellin biosynthesis and inactivation. In: *Plant Hormones*, Springer Netherlands, pp 63–94
- Steiner E, Efroni I, Gopalraj M, Saathoff K, Tseng TS, Kieffer M, Eshed Y, Olszewski N, Weiss D (2012) The Arabidopsis O-linked N-acetylglucosamine transferase SPINDLY interacts with class I TCPs to facilitate cytokinin responses in leaves and flowers. *Plant Cell* 24(1):96–108
- Strauss SH, Costanza A, Séguin A (2015) Genetically engineered trees: paralyzing from good intentions. *Science* 349(6250):794–795
- Swain SM, Tseng T, Olszewski NE (2001) Altered expression of SPINDLY affects gibberellin response and plant development. *Plant Physiol* 126(3):1174–1185
- Toh S, Imamura A, Watanabe A, Nakabayashi K, Okamoto M, Jikumaru Y, Hanada A, Aso Y, Ishiyama K, Tamura N, Iuchi S, Kobayashi M, Yamaguchi S, Kamiya Y, Nambara E, Kawakami N (2008) High temperature-induced abscisic acid biosynthesis and its role in the inhibition of gibberellin action in Arabidopsis seeds. *Plant Physiol* 146(3):1368–1385
- Tseng TS, Salomé PA, McClung CR, Olszewski NE (2004) SPINDLY and GIGANTEA interact and act in Arabidopsis thaliana pathways involved in light responses, flowering, and rhythms in cotyledon movements. *Plant Cell* 16(6):1550–1563
- Weiss D, Ori N (2007) Mechanisms of cross talk between gibberellin and other hormones. *Plant Physiol* 144(3):1240–1246
- Wen CK, Chang C (2002) Arabidopsis RGL1 encodes a negative regulator of gibberellin responses. *Plant Cell* 14(1):87–100
- Won SK, Choi SB, Kumari S, Cho M, Lee SH, Cho HT (2010) Root hair-specific EXPANSIN B genes have been selected for graminaceae root hairs. *Mol Cells* 30(4):369–376
- Yamaguchi S (2008) Gibberellin metabolism and its regulation. *Annu Rev Plant Biol* 59(1):225–251
- Yamaguchi S, Kamiya Y (2000) Gibberellin biosynthesis: its regulation by endogenous and environmental signals. *Plant Cell Physiol* 41(3):251–257
- Zawaski C, Ma C, Strauss SH, French D, Meilan R, Busov VB (2012) PHOTOPERIOD RESPONSE 1 (PHOR1)-like genes regulate shoot/root growth, starch accumulation, and wood formation in *Populus*. *J Exp Bot* 63(15):5623–5634
- Zuur AF, Ieno EN, Walker N, Saveliev AA, Smith GM (2009) *Mixed effects models and extensions in ecology with R*. Springer New York, New York