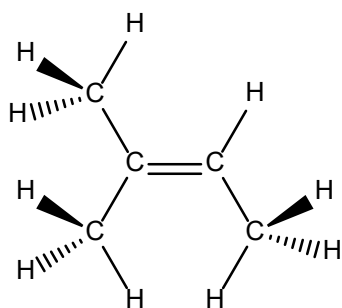


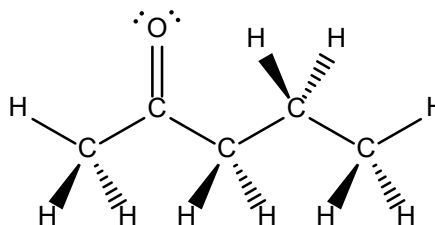
Answers to Exercise 10.1 Line-Bond Notation

1.

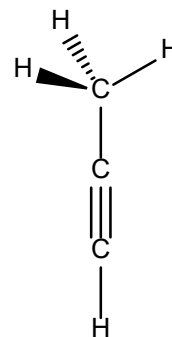
(a)



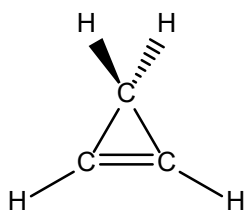
(b)



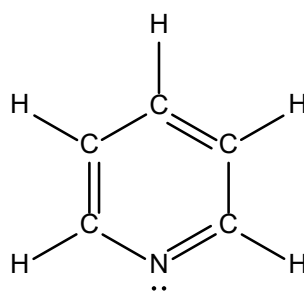
(c)



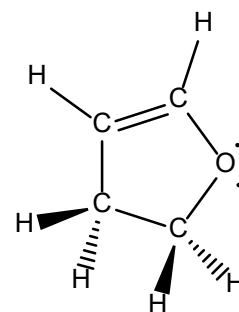
(d)



(e)

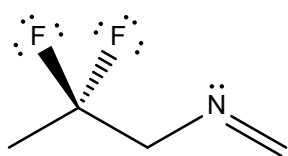


(f)

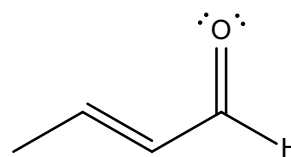


2.

(a)



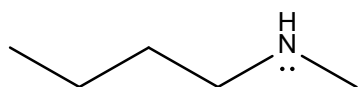
(b)



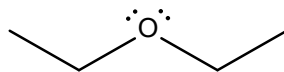
Note that it is typical to draw the H attached to the carbonyl carbon of an aldehyde (even though we don't draw any other H attached to carbon atoms in line-bond structures). This emphasizes that the functional group is, in fact, an aldehyde.

3.

(a)



(b)



(c)

