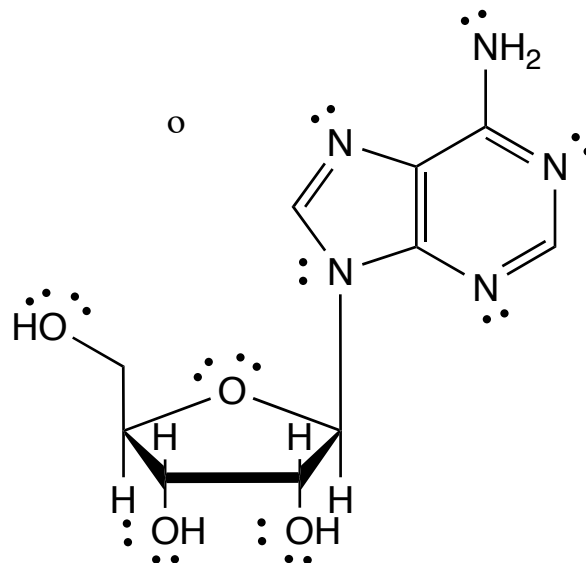
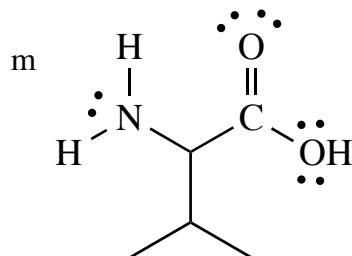
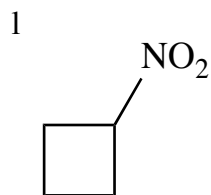
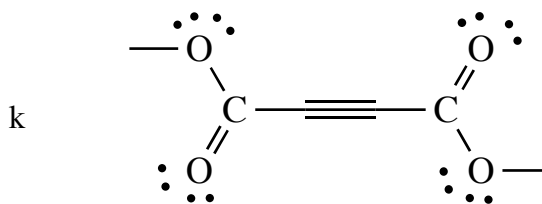
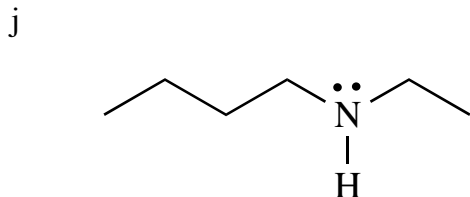
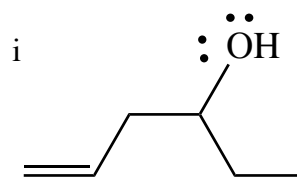
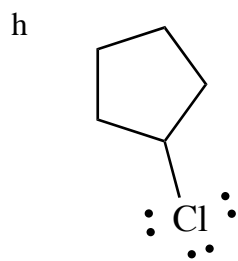
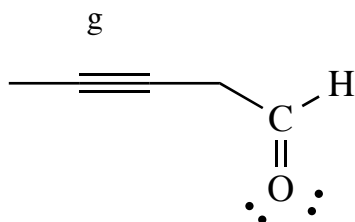
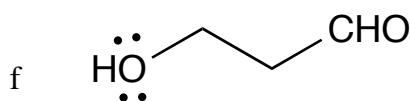
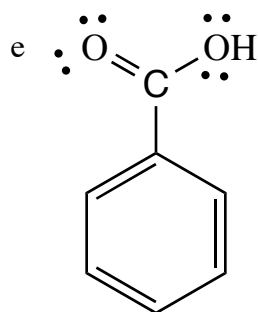
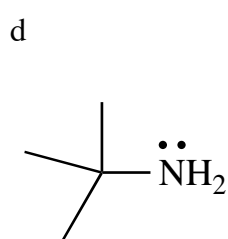
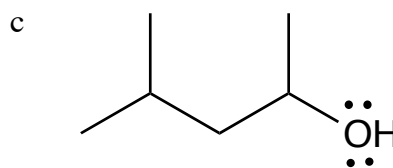
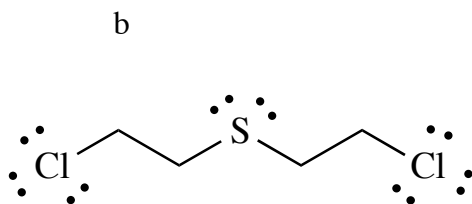
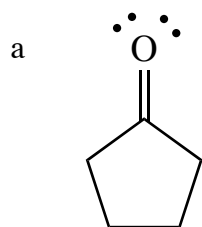
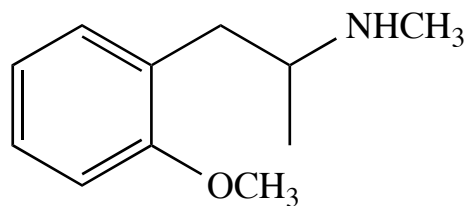


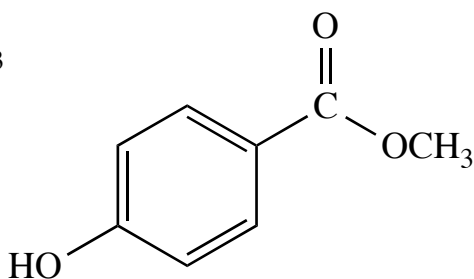
Excercise 6 Answers - Line diagrams



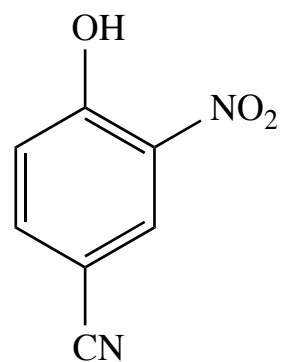
From exercise 3.



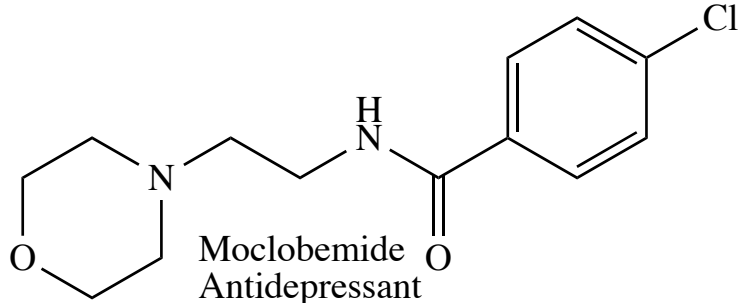
Methoxyphenamine
Bronchodilator



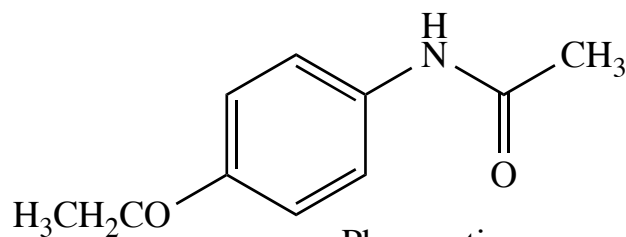
Methyl Paraben
Preservative



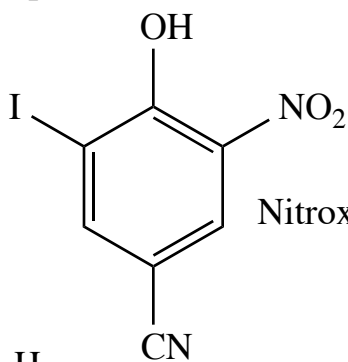
Nitroxynil: Anthelmintic.



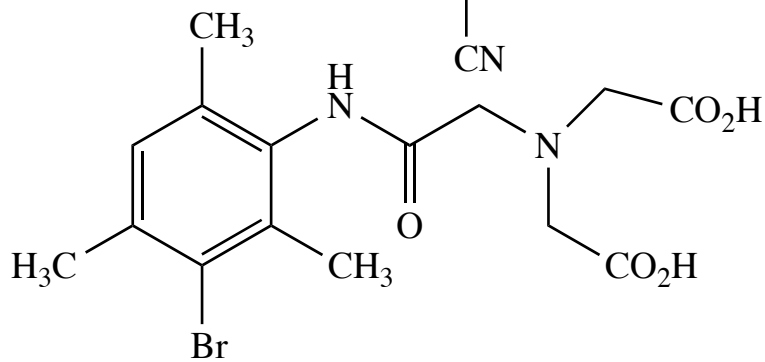
Moclobemide
Antidepressant



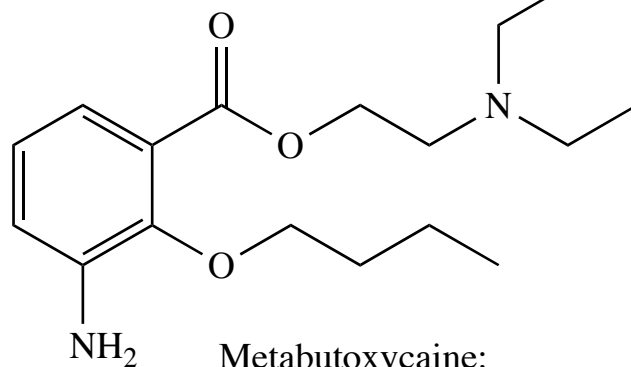
Phenacetin
Analgesic



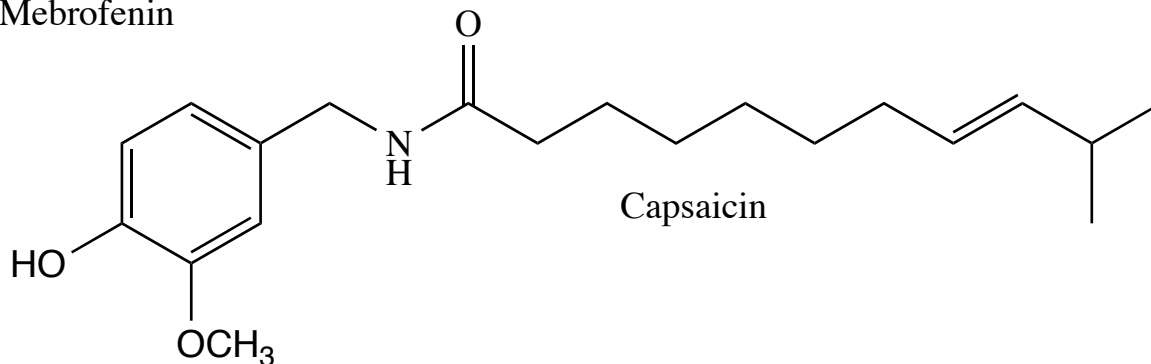
Nitroxynil: Anthelmintic.



Mebrofenin



Metabutoxycaine:
local anaesthetic.



Capsaicin

