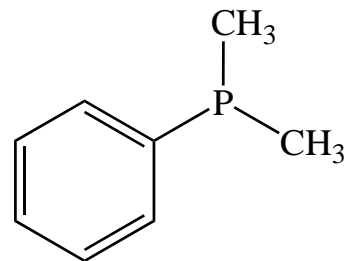
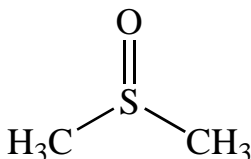
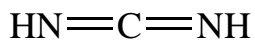
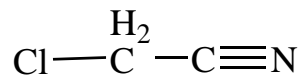
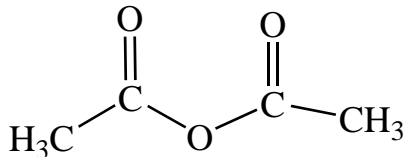
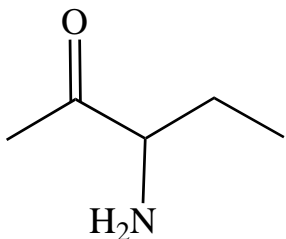


Ex16 - Lewis/Resonance

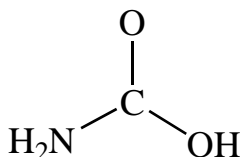
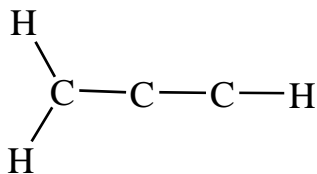
Question One

For each of the following, add the requisite non-bonding electrons.



Question Two

Work out the Lewis structures for all of the following using the connectivity information given.



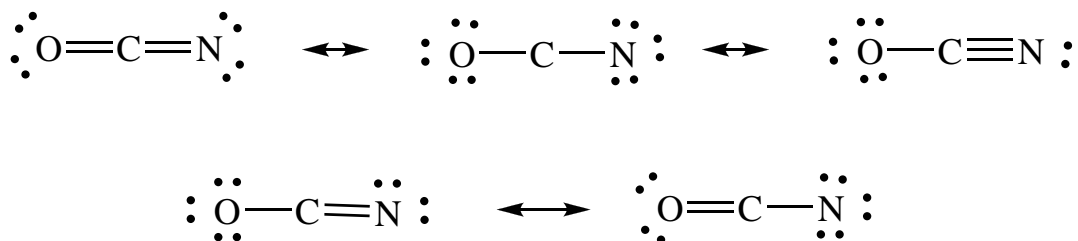
Question Three

Where possible, evaluate the resonance structures in your answers to Question Two, determine which are degenerate, and which are major/minor contributors.

Question Four

In each of the following cases, add formal charges and identify which resonance structures we would not include and why. All non-bonding electrons are shown.

a)



b)

