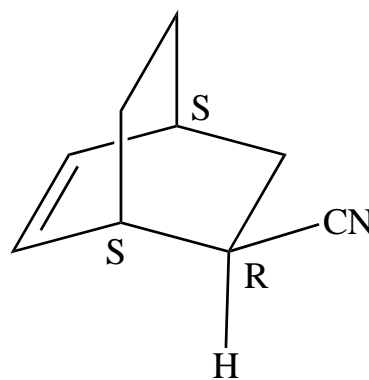
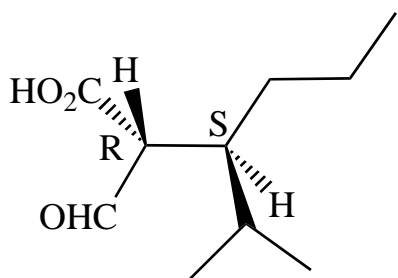
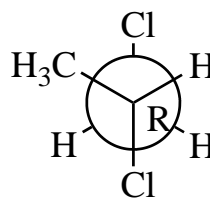
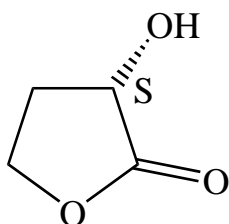
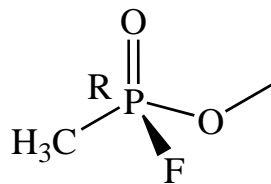
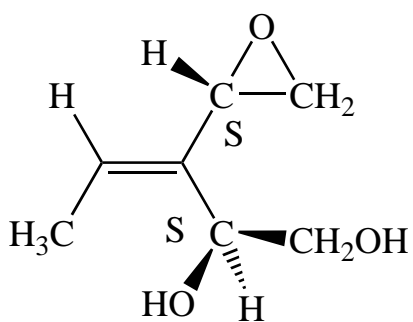
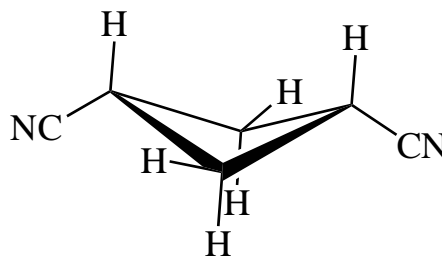
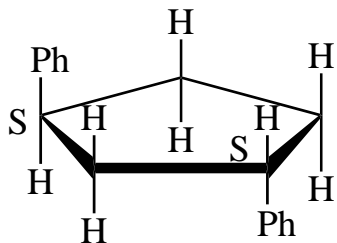


Ex 27A - RS

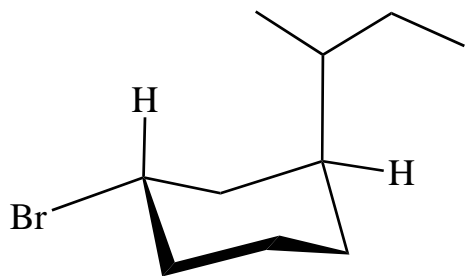
Question One

Label the stereogenic centers of the following of the following molecules as is appropriate.

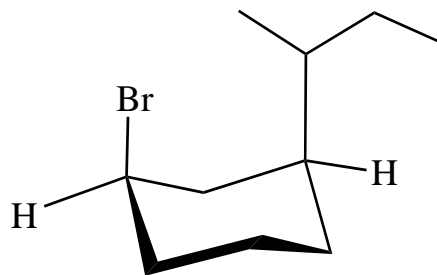


Question Two

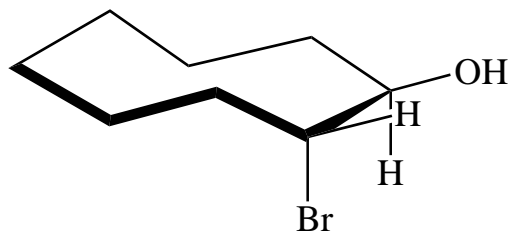
Provide systematic names for the following, including stereochemical descriptors. Note that when assigning configurational labels to stereocenters in cyclic molecules, the terms *cis* and *trans* are no longer required to distinguish between diastereomers nor are they used.



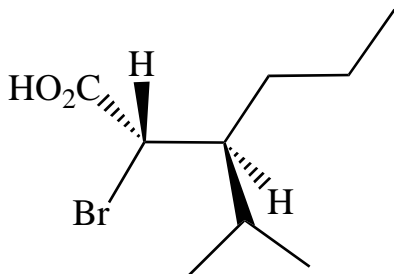
(*1S,3S*)-1-bromo-3-s-butylcyclohexane



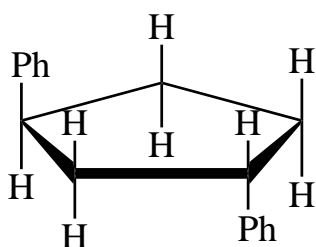
(*1R,3S*)-1-bromo-3-s-butylcyclohexane



(*1R,2R*)-2-bromocyclooctanol



(*2S,3S*)-2-bromo-3-isopropylhexanoic acid



(*1S,3S*)-1,3-diphenylcyclopentane