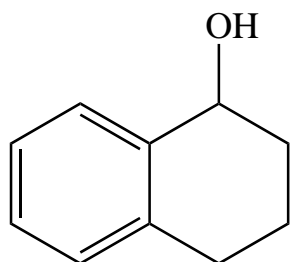
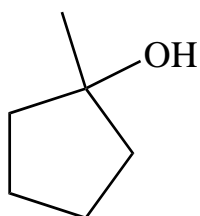


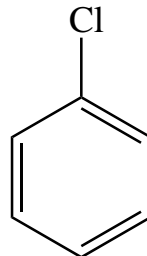
Ex 42A - Classify your substrate.



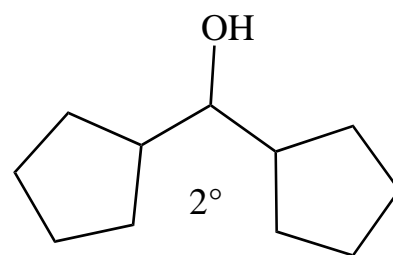
2°, benzylic



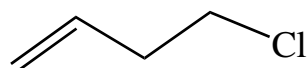
3°



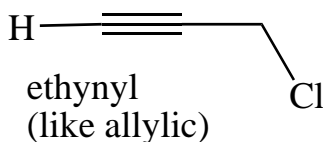
aryl



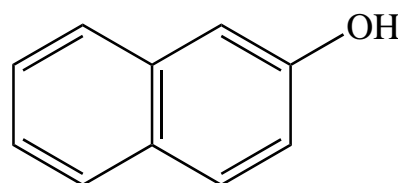
2°



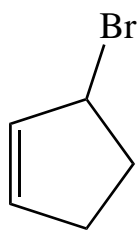
1°



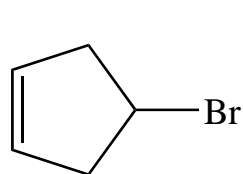
ethynyl
(like allylic)



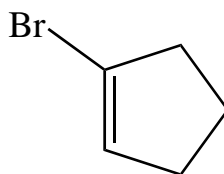
aryl



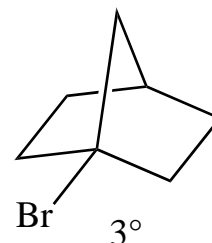
1°, allylic



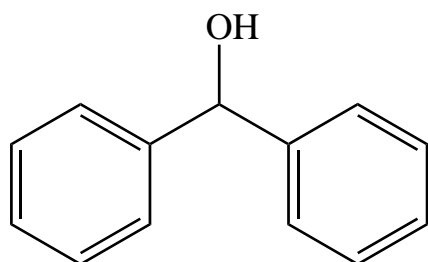
2°



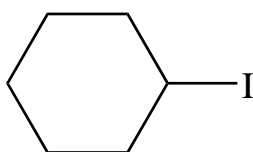
ethenyl
or vinyl



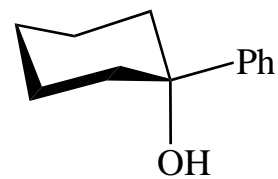
3°



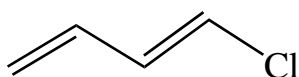
This is referred to as
"doubly" benzylic.



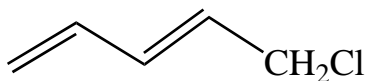
2°



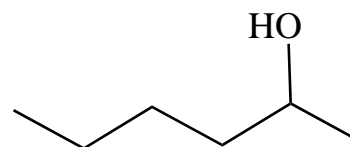
3°, benzylic



ethenyl
or vinyl



1°, allylic



2°