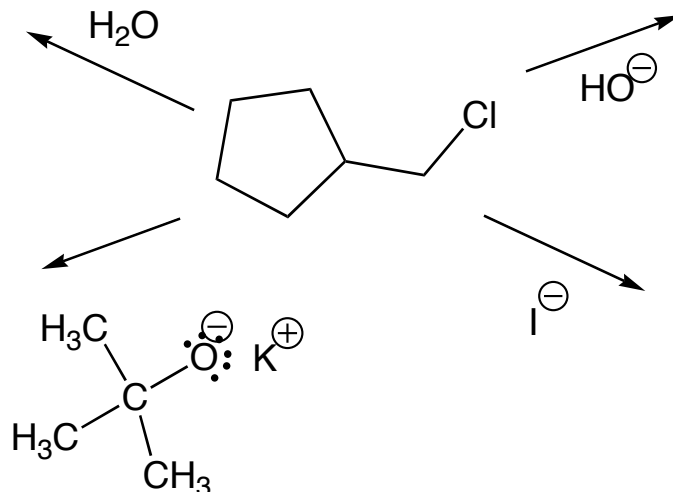


Exercise 67 - Elimination/Substitution

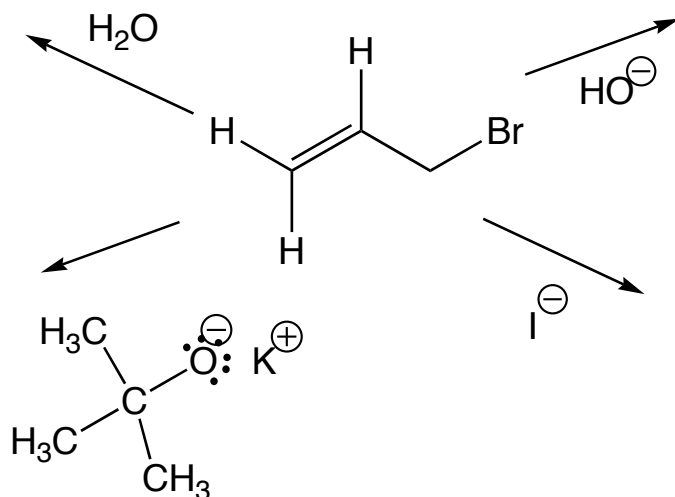
Question One

The following substrate is a 1° alkyl halide and can undergo either SN2 or E2 reaction. Reaction of this substrate with the four different base/nucleophiles shown gives different results: no reaction, E2 predominantly, SN2 only or E2 and SN2. Classify the base/nucleophile in each case (strong or weak, base and/or nucleophile) and match the outcome with the reaction.



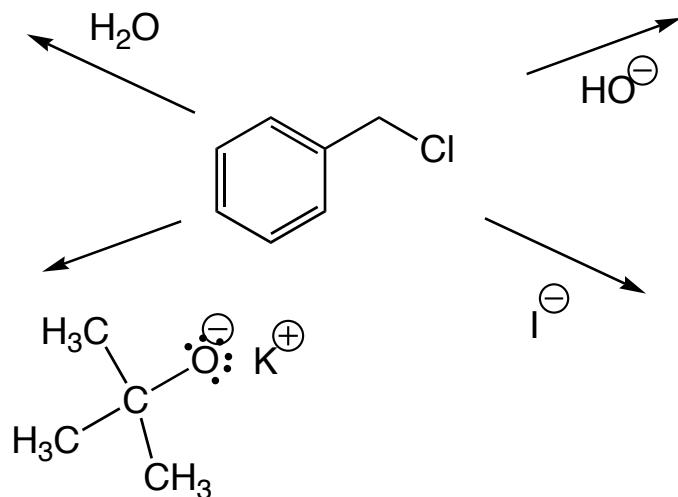
Question Two

We change the substrate to allyl bromide and things change quite significantly. Why, what are the products, and what mechanisms operate?



Question Three

We change our substrate to benzyl chloride. What does this substrate have in common with the substrate in Question Two? What key difference does it have that leads to a different outcome in one reaction?



Question Four

Which one of the following reactions give a greater proportion of E2 and why?

